

Data Path : Z:\pestpcbsrv\HPCHEM1\FID\_A\Data\FA011019\  
Data File : FA002377.D  
Signal(s) : FID1A.CH  
Acq On : 10 Jan 2019 9:10  
Operator : DD/SJ  
Sample : 300 PPMV GASES ICC  
Misc :  
ALS Vial : 2 Sample Multiplier: 1

Instrument :  
FID\_A  
ClientSampleId :  
300 PPMV GASES ICC

Integration File: autoint1.e  
Quant Time: Jan 10 09:42:51 2019  
Quant Method : Z:\pestpcbsrv\HPCHEM1\FID\_A\Method\FA011019 GASES.M  
Quant Title :  
QLast Update : Thu Jan 10 09:39:32 2019  
Response via : Initial Calibration  
Integrator: ChemStation

Volume Inj. :  
Signal Phase : RT-U Plot  
Signal Info : 30M x 0.32mm

Compound	R.T.	Response	Conc Units
-----			
Target Compounds			
1) Ethane	1.784	49072	275.447 ppmv
2) Ethylene	1.737	47621	272.680 ppmv
3) Methane	1.481	28394	279.075 ppmv
-----			

(f)=RT Delta > 1/2 Window

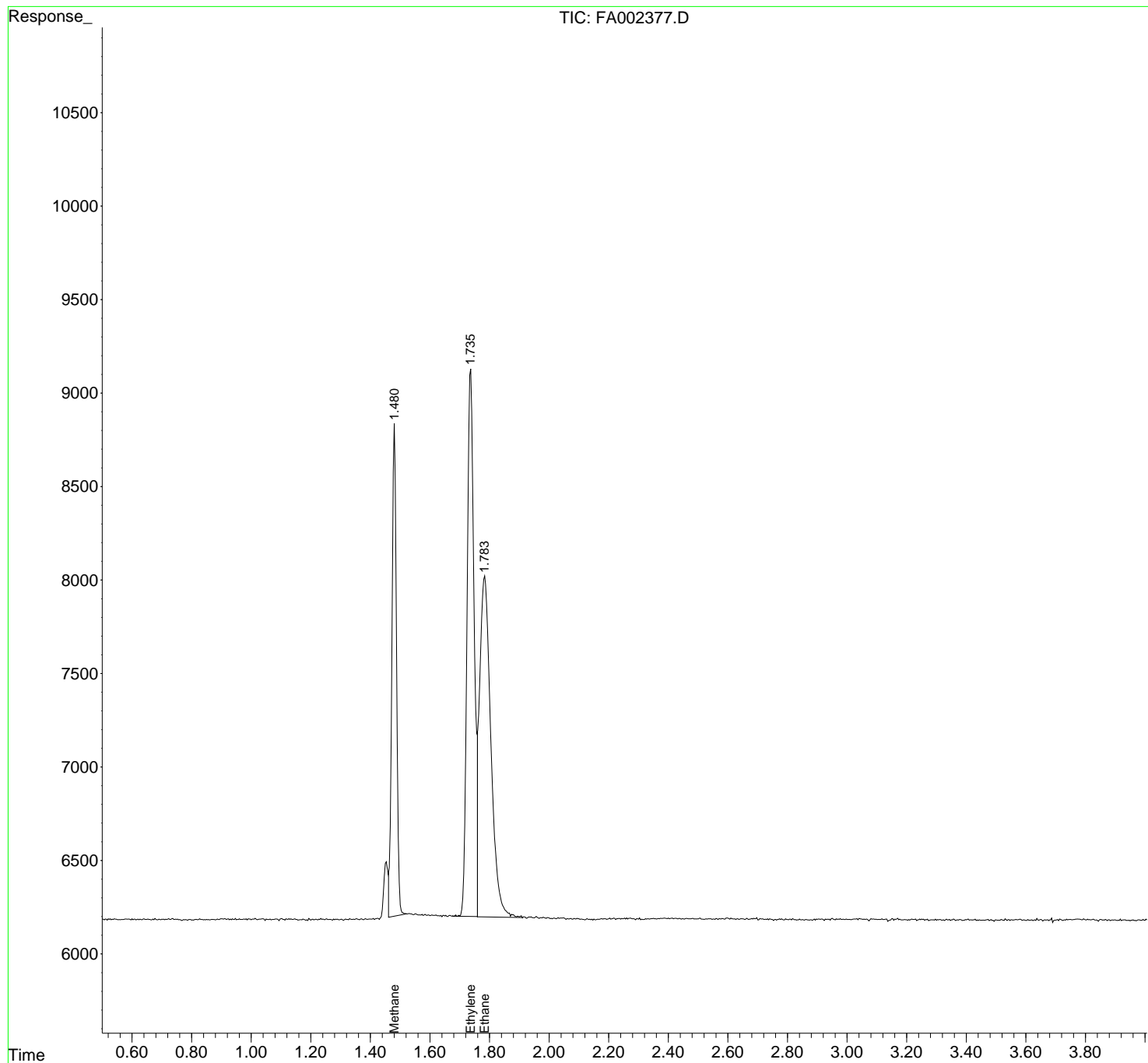
(m)=manual int.

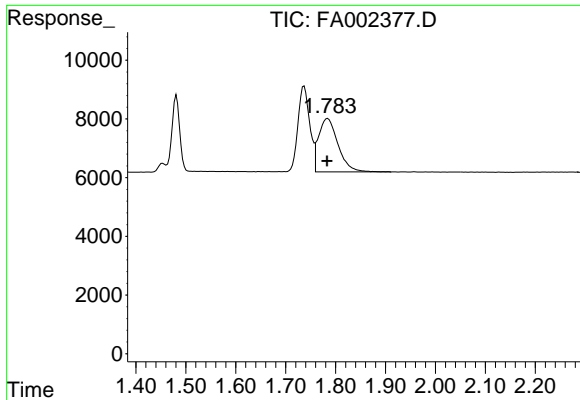
Data Path : Z:\pestpcbsrv\HPCHEM1\FID\_A\Data\FA011019\  
 Data File : FA002377.D  
 Signal(s) : FID1A.CH  
 Acq On : 10 Jan 2019 9:10  
 Operator : DD/SJ  
 Sample : 300 PPMV GASES ICC  
 Misc :  
 ALS Vial : 2 Sample Multiplier: 1

**Instrument :**  
 FID\_A  
**ClientSampleId :**  
 300 PPMV GASES ICC

Integration File: autoint1.e  
 Quant Time: Jan 10 09:42:51 2019  
 Quant Method : Z:\pestpcbsrv\HPCHEM1\FID\_A\Method\FA011019 GASES.M  
 Quant Title :  
 QLast Update : Thu Jan 10 09:39:32 2019  
 Response via : Initial Calibration  
 Integrator: ChemStation

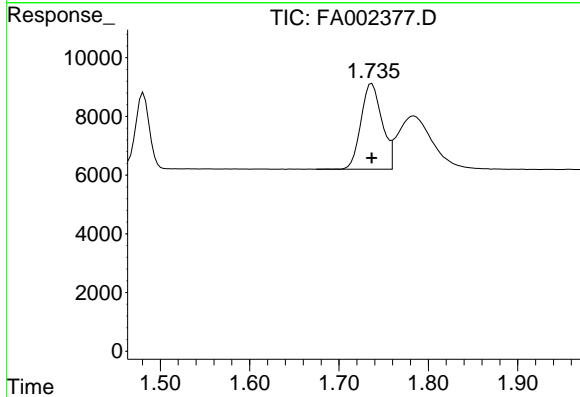
Volume Inj. :  
 Signal Phase : RT-U Plot  
 Signal Info : 30M x 0.32mm



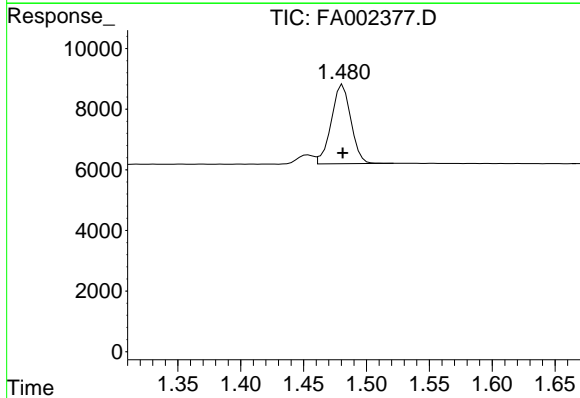


#1 Ethane  
 R.T.: 1.784 min  
 Delta R.T.: 0.001 min  
 Response: 49072  
 Conc: 275.45 ppmv

**Instrument :**  
 FID\_A  
**ClientSampleId :**  
 300 PPMV GASES ICC



#2 Ethylene  
 R.T.: 1.737 min  
 Delta R.T.: 0.000 min  
 Response: 47621  
 Conc: 272.68 ppmv



#3 Methane  
 R.T.: 1.481 min  
 Delta R.T.: 0.000 min  
 Response: 28394  
 Conc: 279.07 ppmv