

Data Path : Z:\pestpcbsrv\HPCHEM1\FID\_A\Data\FA011019\  
 Data File : FA002399.D  
 Signal(s) : FID1A.CH  
 Acq On : 10 Jan 2019 14:25  
 Operator : DD/SJ  
 Sample : K1089-23  
 Misc :  
 ALS Vial : 25 Sample Multiplier: 1

Instrument :  
 FID\_A  
 ClientSampleId :

Integration File: autoint1.e  
 Quant Time: Jan 11 12:12:05 2019  
 Quant Method : Z:\pestpcbsrv\HPCHEM1\FID\_A\Method\FA011019 GASES.M  
 Quant Title :  
 QLast Update : Thu Jan 10 09:39:32 2019  
 Response via : Initial Calibration  
 Integrator: ChemStation

Volume Inj. :  
 Signal Phase : RT-U Plot  
 Signal Info : 30M x 0.32mm

Compound	R.T.	Response	Conc Units
-----			
Target Compounds			
2) Ethylene	1.711	213	1.217 ppmv
3) Methane	1.483	43418	426.745 ppmv
-----			

(f)=RT Delta > 1/2 Window

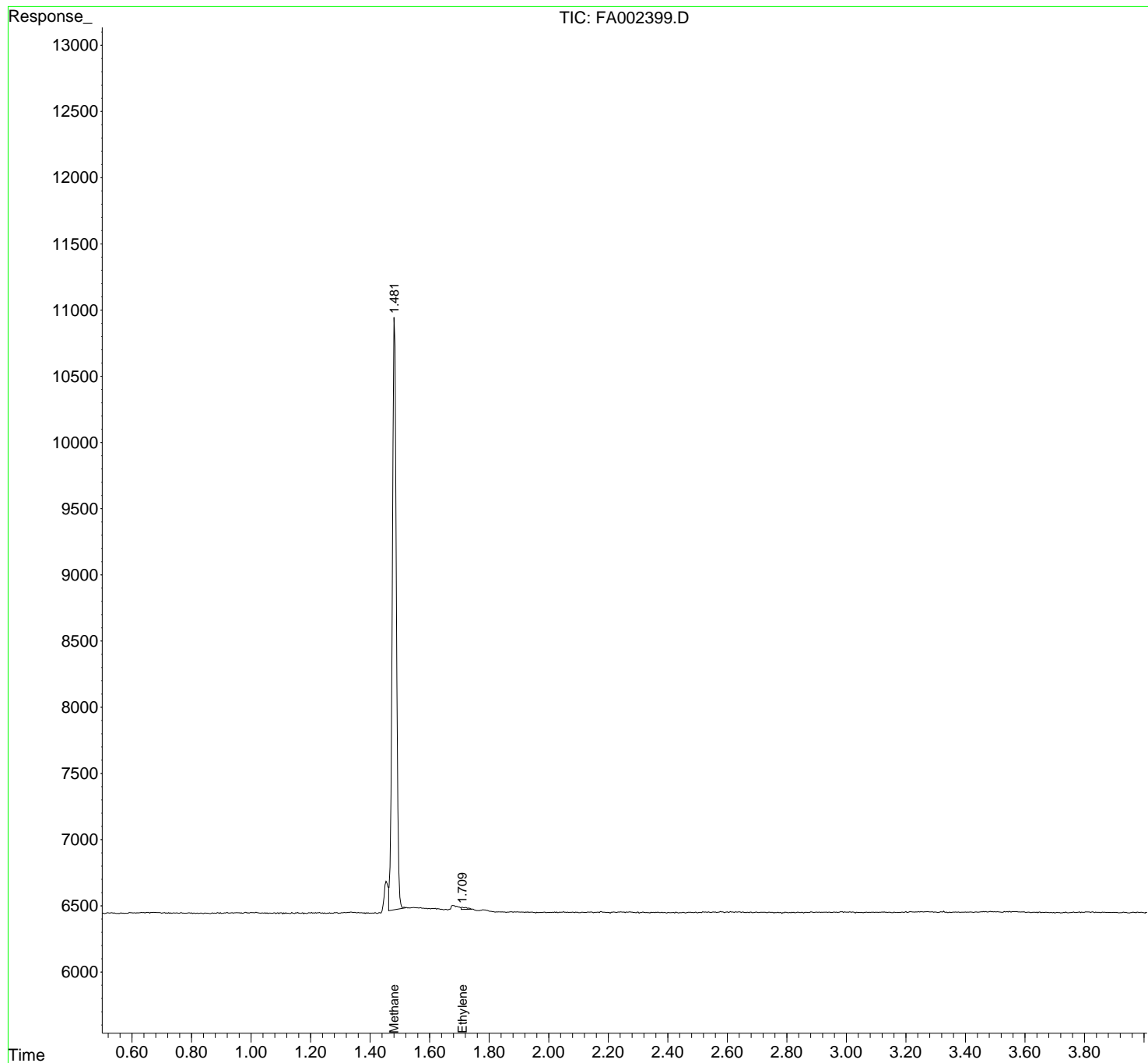
(m)=manual int.

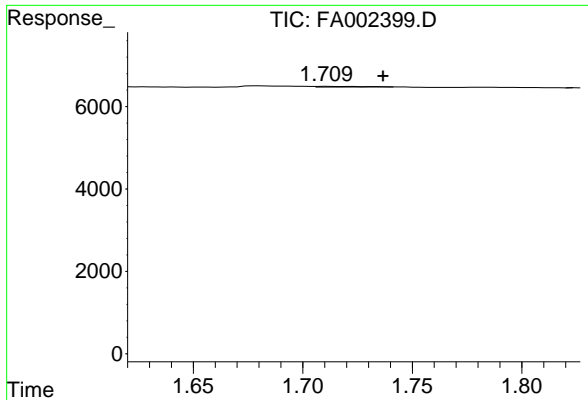
Data Path : Z:\pestpcbsrv\HPCHEM1\FID\_A\Data\FA011019\  
 Data File : FA002399.D  
 Signal(s) : FID1A.CH  
 Acq On : 10 Jan 2019 14:25  
 Operator : DD/SJ  
 Sample : K1089-23  
 Misc :  
 ALS Vial : 25 Sample Multiplier: 1

Instrument :  
 FID\_A  
 ClientSampled :

Integration File: autoint1.e  
 Quant Time: Jan 11 12:12:05 2019  
 Quant Method : Z:\pestpcbsrv\HPCHEM1\FID\_A\Method\FA011019 GASES.M  
 Quant Title :  
 QLast Update : Thu Jan 10 09:39:32 2019  
 Response via : Initial Calibration  
 Integrator: ChemStation

Volume Inj. :  
 Signal Phase : RT-U Plot  
 Signal Info : 30M x 0.32mm

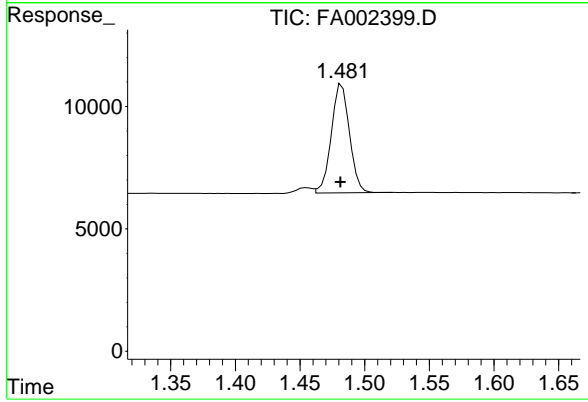




#2 Ethylene

R.T.: 1.711 min  
Delta R.T.: -0.026 min  
Response: 213  
Conc: 1.22 ppmv

Instrument :  
FID\_A  
ClientSampleId :



#3 Methane

R.T.: 1.483 min  
Delta R.T.: 0.001 min  
Response: 43418  
Conc: 426.75 ppmv