

Data Path : Z:\pestpcbsrv\HPCHEM1\FID_A\Data\FA011019\
 Data File : FA002420.D
 Signal(s) : FID1A.CH
 Acq On : 10 Jan 2019 16:56
 Operator : DD/SJ
 Sample : K1079-19
 Misc :
 ALS Vial : 46 Sample Multiplier: 1

Instrument :
 FID_A
 ClientSampleId :

Integration File: autoint1.e
 Quant Time: Jan 11 12:13:29 2019
 Quant Method : Z:\pestpcbsrv\HPCHEM1\FID_A\Method\FA011019 GASES.M
 Quant Title :
 QLast Update : Thu Jan 10 09:39:32 2019
 Response via : Initial Calibration
 Integrator: ChemStation

Volume Inj. :
 Signal Phase : RT-U Plot
 Signal Info : 30M x 0.32mm

Compound	R.T.	Response	Conc Units

Target Compounds			
1) Ethane	1.785	1722	9.664 ppmv
2) Ethylene	1.714	1420	8.131 ppmv
3) Methane	1.485	805802	7920.053 ppmv

(f)=RT Delta > 1/2 Window

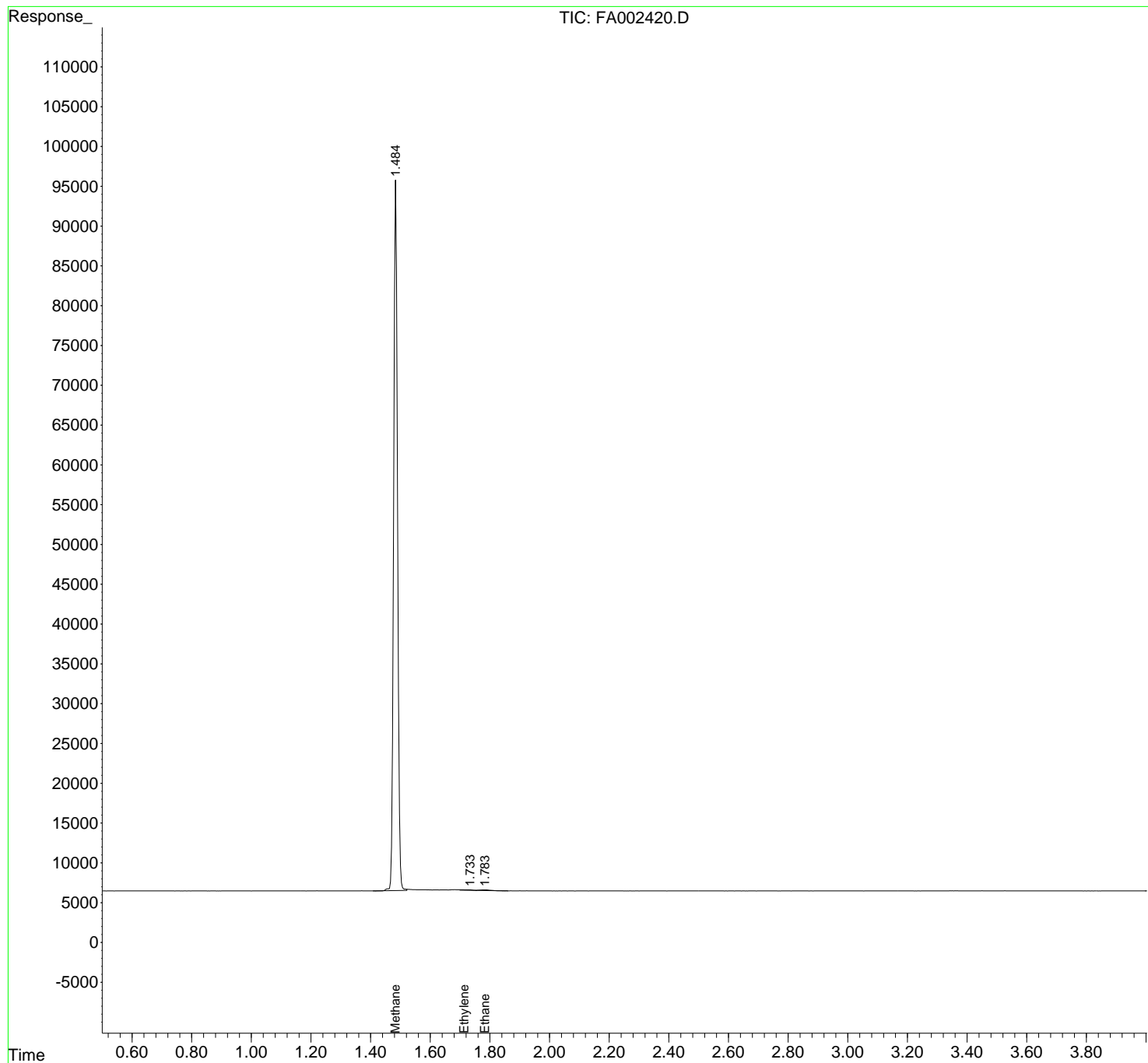
(m)=manual int.

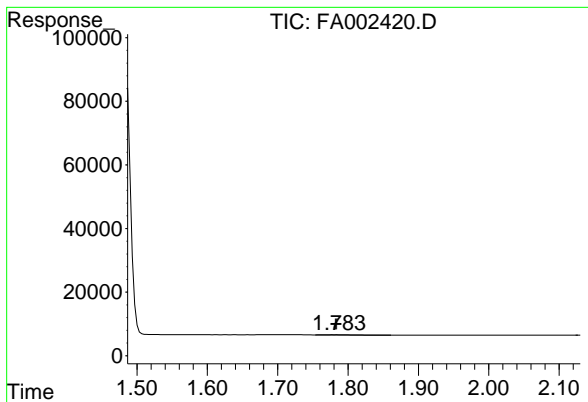
Data Path : Z:\pestpcbsrv\HPCHEM1\FID_A\Data\FA011019\
Data File : FA002420.D
Signal(s) : FID1A.CH
Acq On : 10 Jan 2019 16:56
Operator : DD/SJ
Sample : K1079-19
Misc :
ALS Vial : 46 Sample Multiplier: 1

Instrument :
FID_A
ClientSampleId :

Integration File: autoint1.e
Quant Time: Jan 11 12:13:29 2019
Quant Method : Z:\pestpcbsrv\HPCHEM1\FID_A\Method\FA011019 GASES.M
Quant Title :
QLast Update : Thu Jan 10 09:39:32 2019
Response via : Initial Calibration
Integrator: ChemStation

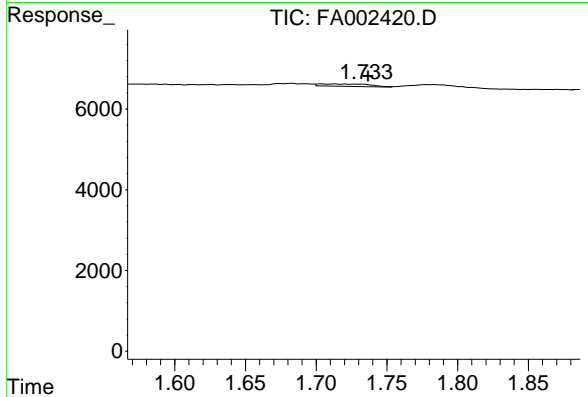
Volume Inj. :
Signal Phase : RT-U Plot
Signal Info : 30M x 0.32mm



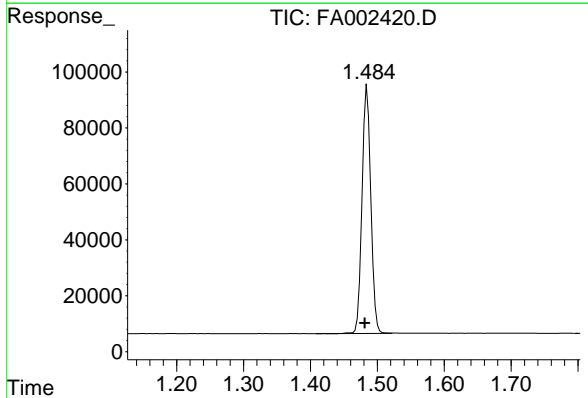


#1 Ethane
 R.T.: 1.785 min
 Delta R.T.: 0.002 min
 Response: 1722
 Conc: 9.66 ppmv

Instrument :
 FID_A
 ClientSampleId :



#2 Ethylene
 R.T.: 1.714 min
 Delta R.T.: -0.023 min
 Response: 1420
 Conc: 8.13 ppmv



#3 Methane
 R.T.: 1.485 min
 Delta R.T.: 0.004 min
 Response: 805802
 Conc: 7920.05 ppmv