

Data Path : Z:\pestpcbsrv\HPCHEM1\FID_A\Data\FA011019\
 Data File : FA002425.D
 Signal(s) : FID1A.CH
 Acq On : 10 Jan 2019 17:31
 Operator : DD/SJ
 Sample : 200 PPMV GASES CCC
 Misc :
 ALS Vial : 51 Sample Multiplier: 1

Instrument :
 FID_A
 ClientSampleId :

Integration File: autoint1.e
 Quant Time: Jan 11 12:13:49 2019
 Quant Method : Z:\pestpcbsrv\HPCHEM1\FID_A\Method\FA011019 GASES.M
 Quant Title :
 QLast Update : Thu Jan 10 09:39:32 2019
 Response via : Initial Calibration
 Integrator: ChemStation

Volume Inj. :
 Signal Phase : RT-U Plot
 Signal Info : 30M x 0.32mm

Compound	R.T.	Response	Conc Units

Target Compounds			
1) Ethane	1.786	31840	178.725 ppmv
2) Ethylene	1.739	30012	171.850 ppmv
3) Methane	1.483	20628	202.748 ppmv

(f)=RT Delta > 1/2 Window

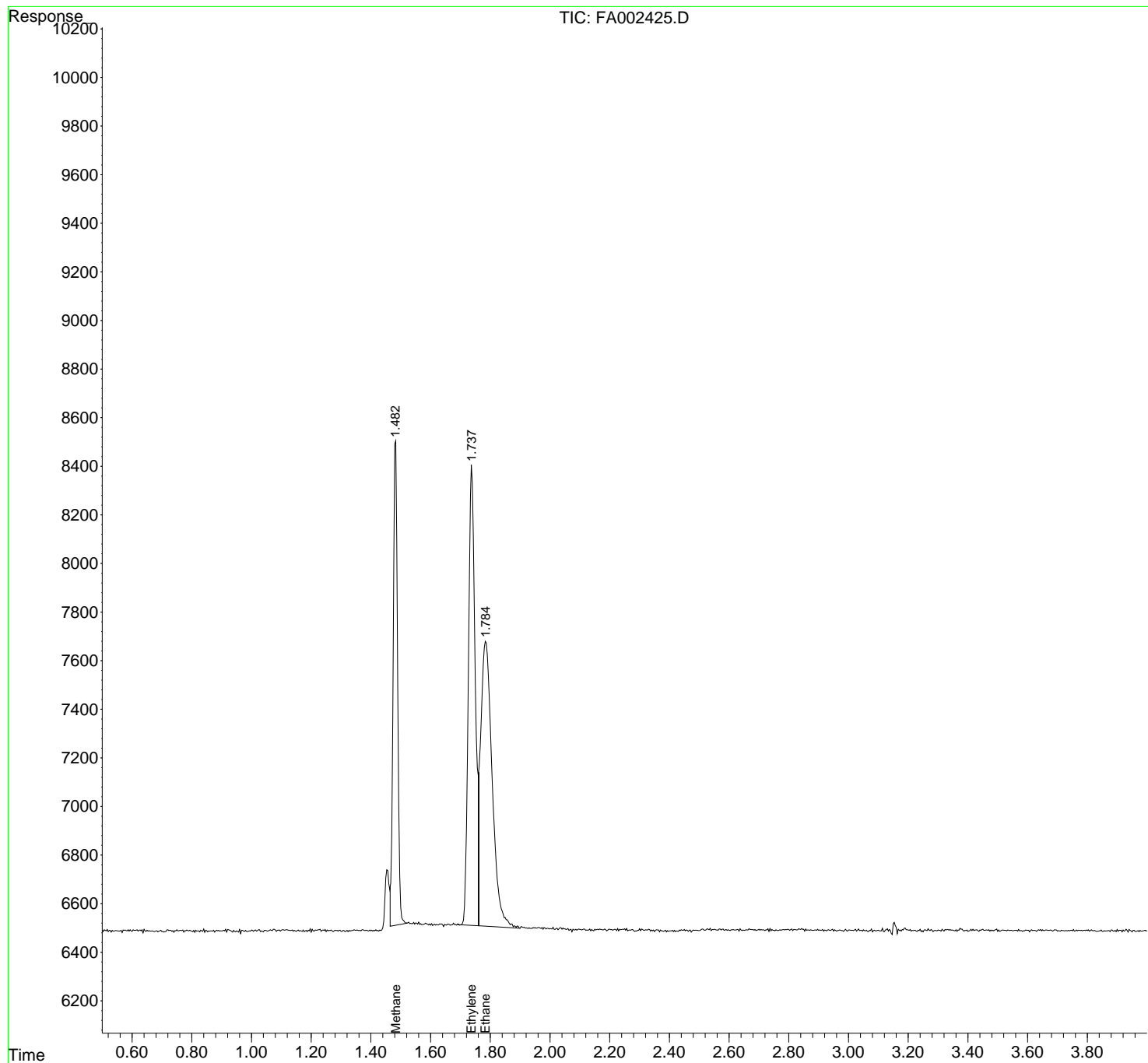
(m)=manual int.

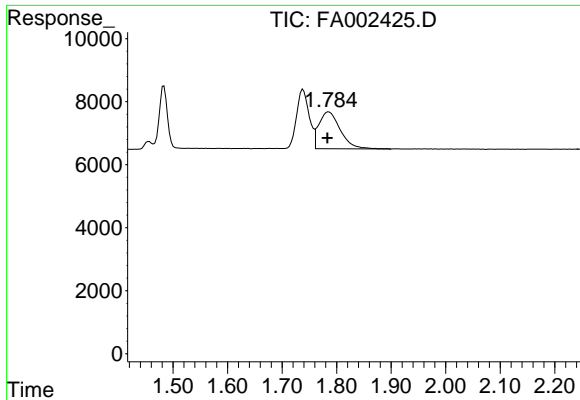
Data Path : Z:\pestpcbsrv\HPCHEM1\FID_A\Data\FA011019\
 Data File : FA002425.D
 Signal(s) : FID1A.CH
 Acq On : 10 Jan 2019 17:31
 Operator : DD/SJ
 Sample : 200 PPMV GASES CCC
 Misc :
 ALS Vial : 51 Sample Multiplier: 1

Instrument :
 FID_A
 ClientSampled :

Integration File: autoint1.e
 Quant Time: Jan 11 12:13:49 2019
 Quant Method : Z:\pestpcbsrv\HPCHEM1\FID_A\Method\FA011019 GASES.M
 Quant Title :
 QLast Update : Thu Jan 10 09:39:32 2019
 Response via : Initial Calibration
 Integrator: ChemStation

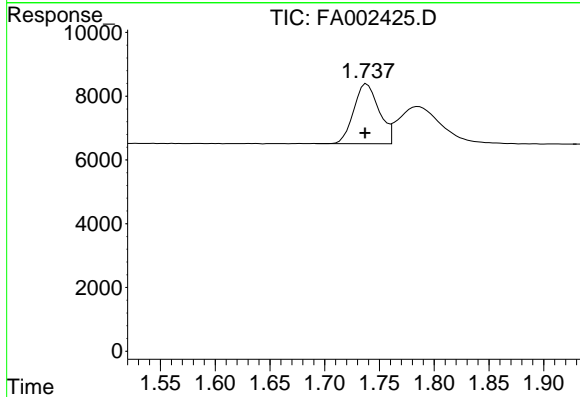
Volume Inj. :
 Signal Phase : RT-U Plot
 Signal Info : 30M x 0.32mm



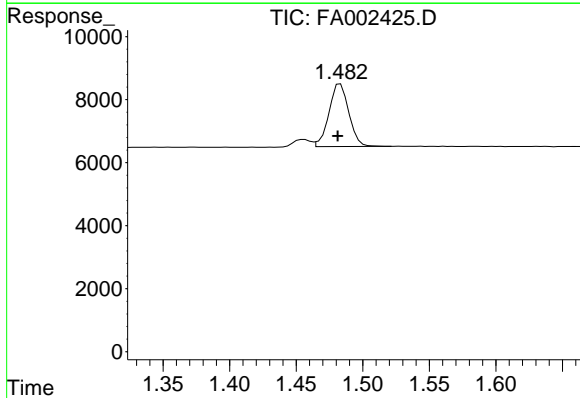


#1 Ethane
 R.T.: 1.786 min
 Delta R.T.: 0.003 min
 Response: 31840
 Conc: 178.73 ppmv

Instrument :
 FID_A
 ClientSampleId :



#2 Ethylene
 R.T.: 1.739 min
 Delta R.T.: 0.002 min
 Response: 30012
 Conc: 171.85 ppmv



#3 Methane
 R.T.: 1.483 min
 Delta R.T.: 0.002 min
 Response: 20628
 Conc: 202.75 ppmv