

Data Path : Z:\pestpcbsrv\HPCHEM1\FID_A\Data\FA013023\
 Data File : FA003772.D
 Signal(s) : FID1A.CH
 Acq On : 30 Jan 2023 9:19
 Operator : SJ/MA
 Sample : 100 PPMV GASES ICC
 Misc :
 ALS Vial : 4 Sample Multiplier: 1

Instrument :
 FID_A
ClientSampleId :
 100 PPMV GASES ICC

Integration File: autoint1.e
 Quant Time: Jan 30 09:16:33 2023
 Quant Method : Z:\pestpcbsrv\HPCHEM1\FID_A\Method\FA013023 GASES.M
 Quant Title :
 QLast Update : Mon Jan 30 09:13:25 2023
 Response via : Initial Calibration
 Integrator: ChemStation

Volume Inj. :
 Signal Phase : RT-U Plot
 Signal Info : 30M x 0.32mm

Compound	R.T.	Response	Conc Units

Target Compounds			
1) Ethane	1.728	29325	97.125 ppmv
2) Ethylene	1.661	28043	98.205 ppmv
3) Methane	1.322	15520	101.403 ppmv

(f)=RT Delta > 1/2 Window

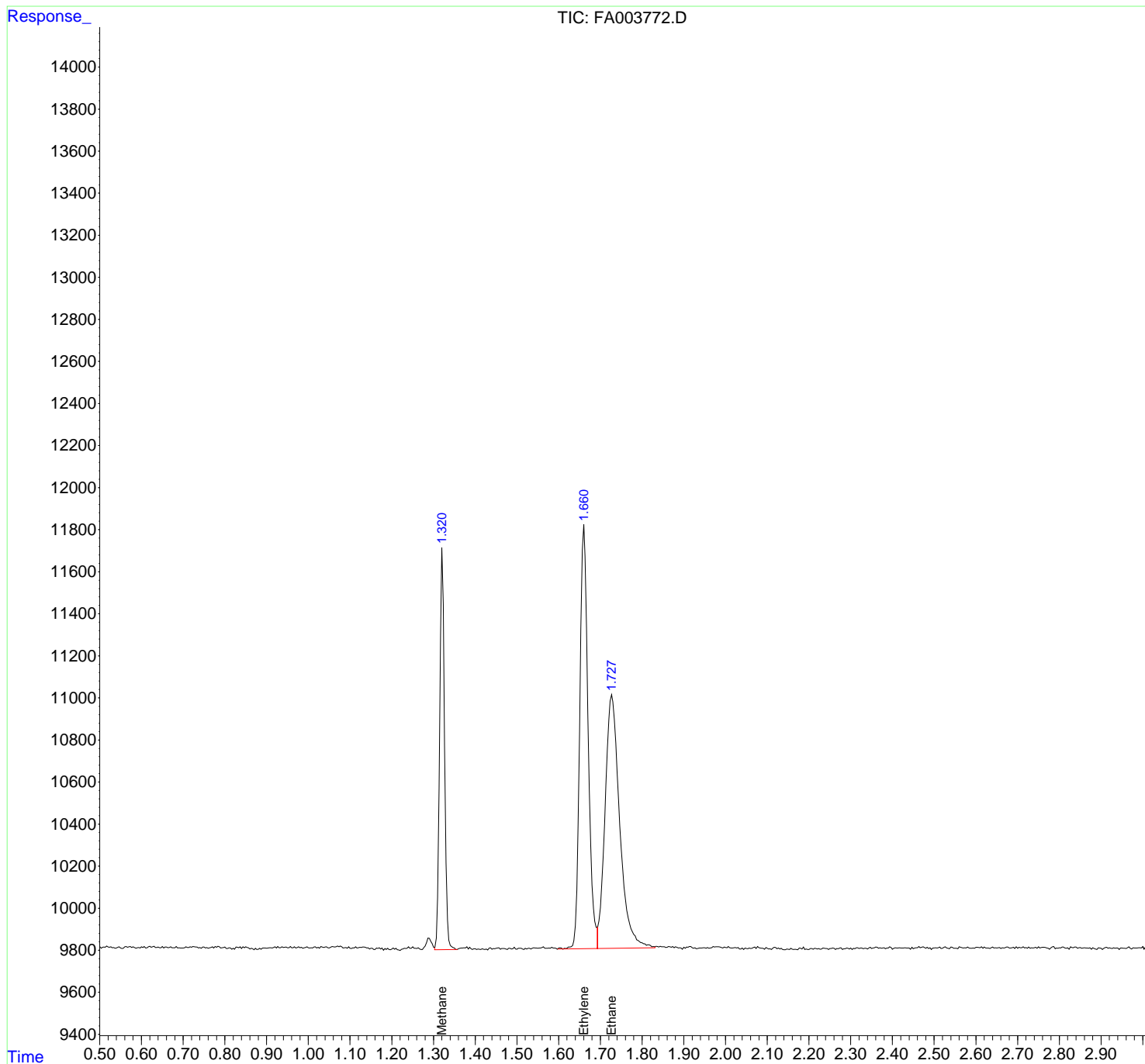
(m)=manual int.

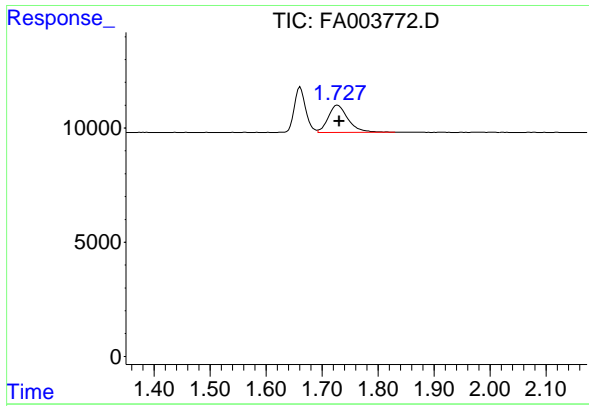
Data Path : Z:\pestpcbsrv\HPCHEM1\FID_A\Data\FA013023\
 Data File : FA003772.D
 Signal(s) : FID1A.CH
 Acq On : 30 Jan 2023 9:19
 Operator : SJ/MA
 Sample : 100 PPMV GASES ICC
 Misc :
 ALS Vial : 4 Sample Multiplier: 1

Instrument :
 FID_A
ClientSampleId :
 100 PPMV GASES ICC

Integration File: autoint1.e
 Quant Time: Jan 30 09:16:33 2023
 Quant Method : Z:\pestpcbsrv\HPCHEM1\FID_A\Method\FA013023 GASES.M
 Quant Title :
 QLast Update : Mon Jan 30 09:13:25 2023
 Response via : Initial Calibration
 Integrator: ChemStation

Volume Inj. :
 Signal Phase : RT-U Plot
 Signal Info : 30M x 0.32mm

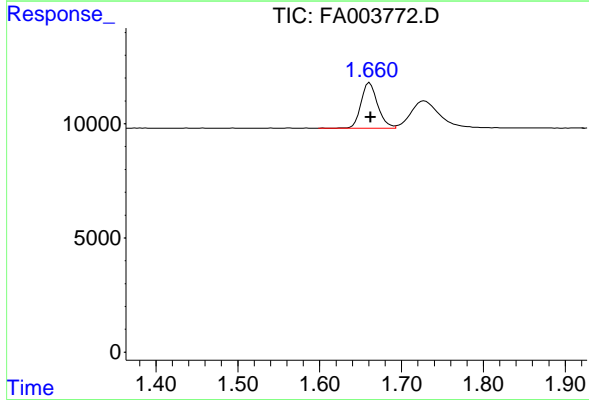




#1 Ethane

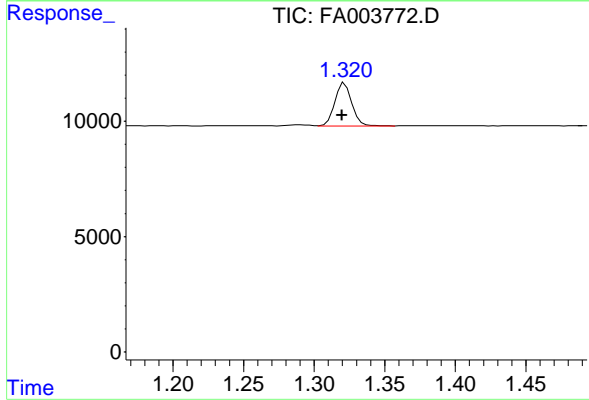
R.T.: 1.728 min
 Delta R.T.: -0.003 min
 Response: 29325
 Conc: 97.13 ppmv

Instrument : FID_A
 ClientSampleId : 100 PPMV GASES ICC



#2 Ethylene

R.T.: 1.661 min
 Delta R.T.: 0.000 min
 Response: 28043
 Conc: 98.20 ppmv



#3 Methane

R.T.: 1.322 min
 Delta R.T.: 0.002 min
 Response: 15520
 Conc: 101.40 ppmv