

Data Path : Z:\pestpcbsrv\HPCHEM1\FID_A\Data\FA021020\
 Data File : FA002814.D
 Signal(s) : FID1A.CH
 Acq On : 10 Feb 2020 14:18
 Operator : UA/AJ
 Sample : 500 PPMV GASES ICC
 Misc :
 ALS Vial : 5 Sample Multiplier: 1

Instrument :
 FID_A
ClientSampleId :
 500 PPMV GASES ICC

Integration File: autoint1.e
 Quant Time: Feb 10 14:18:19 2020
 Quant Method : Z:\pestpcbsrv\HPCHEM1\FID_A\Method\FA021020 GASES.M
 Quant Title :
 QLast Update : Mon Feb 10 13:48:07 2020
 Response via : Initial Calibration
 Integrator: ChemStation

Volume Inj. :
 Signal Phase : RT-U Plot
 Signal Info : 30M x 0.32mm

Compound	R.T.	Response	Conc Units

Target Compounds			
1) Ethane	3.028	120447	498.401 ppmv
2) Ethylene	2.919	103674	484.262 ppmv
3) Methane	2.384	66162	483.884 ppmv

(f)=RT Delta > 1/2 Window

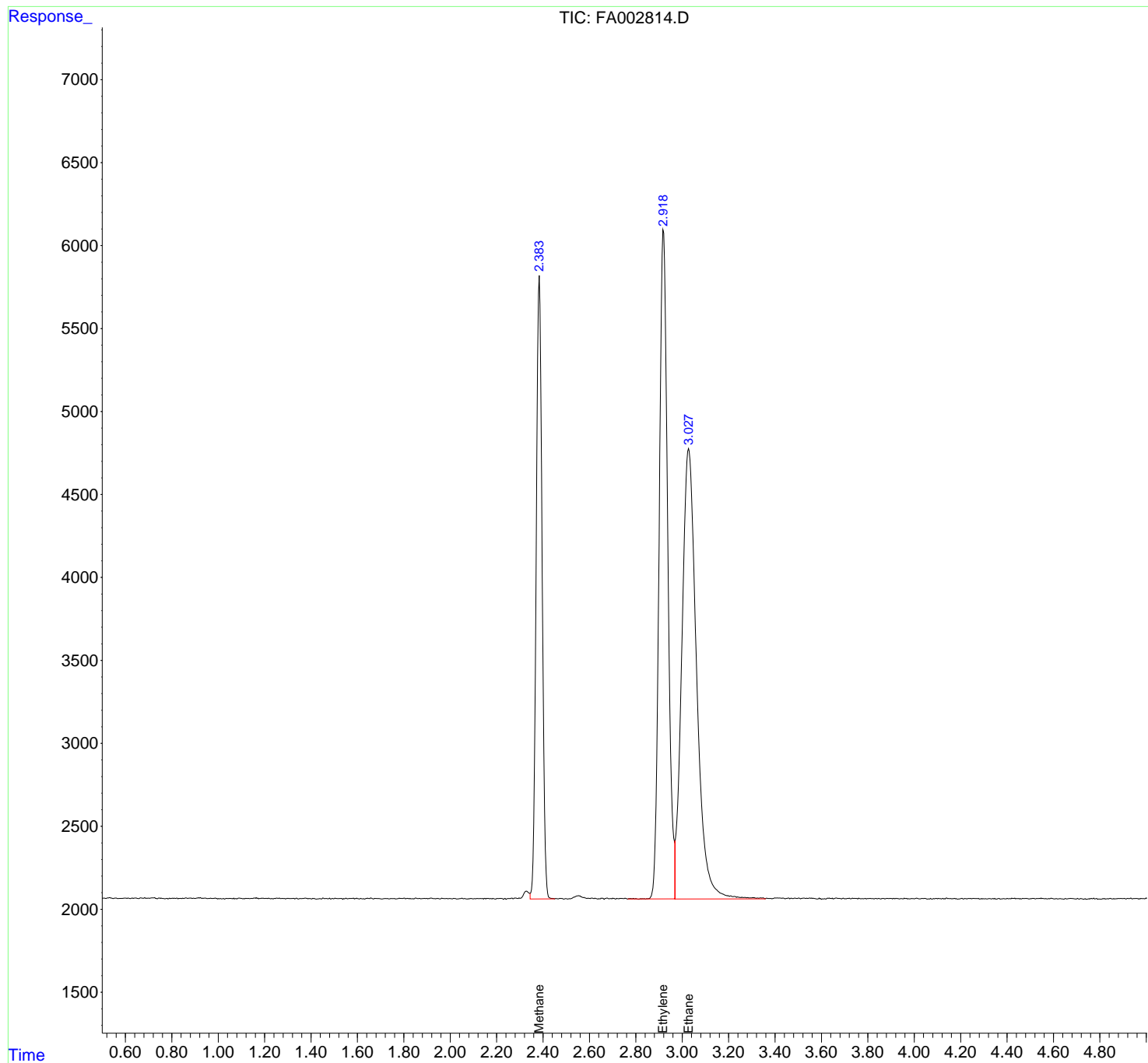
(m)=manual int.

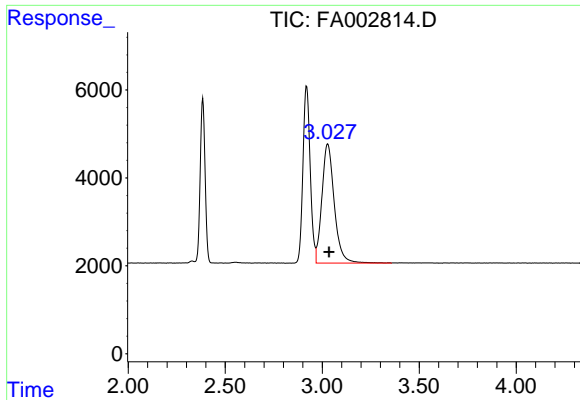
Data Path : Z:\pestpcbsrv\HPCHEM1\FID_A\Data\FA021020\
 Data File : FA002814.D
 Signal(s) : FID1A.CH
 Acq On : 10 Feb 2020 14:18
 Operator : UA/AJ
 Sample : 500 PPMV GASES ICC
 Misc :
 ALS Vial : 5 Sample Multiplier: 1

Instrument :
 FID_A
ClientSampleId :
 500 PPMV GASES ICC

Integration File: autoint1.e
 Quant Time: Feb 10 14:18:19 2020
 Quant Method : Z:\pestpcbsrv\HPCHEM1\FID_A\Method\FA021020 GASES.M
 Quant Title :
 QLast Update : Mon Feb 10 13:48:07 2020
 Response via : Initial Calibration
 Integrator: ChemStation

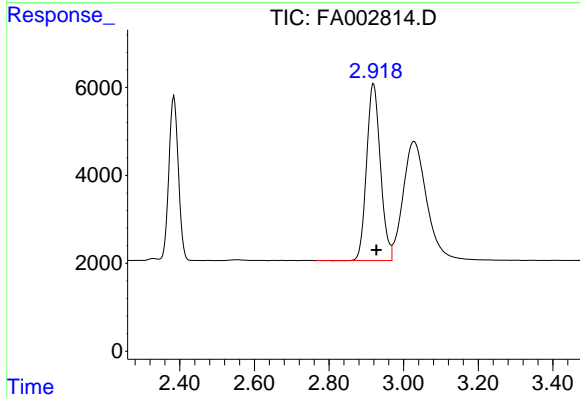
Volume Inj. :
 Signal Phase : RT-U Plot
 Signal Info : 30M x 0.32mm



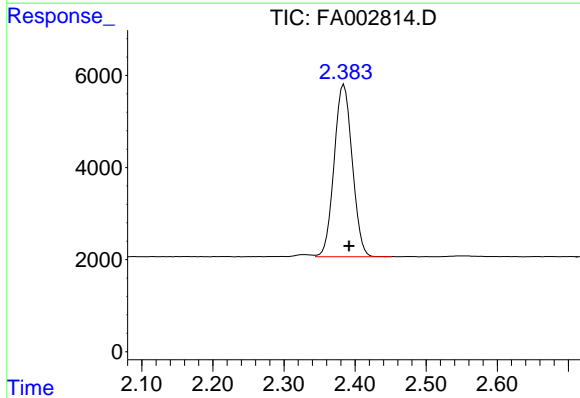


#1 Ethane
 R.T.: 3.028 min
 Delta R.T.: -0.007 min
 Response: 120447
 Conc: 498.40 ppmv

Instrument :
 FID_A
ClientSampleId :
 500 PPMV GASES ICC



#2 Ethylene
 R.T.: 2.919 min
 Delta R.T.: -0.008 min
 Response: 103674
 Conc: 484.26 ppmv



#3 Methane
 R.T.: 2.384 min
 Delta R.T.: -0.008 min
 Response: 66162
 Conc: 483.88 ppmv