

Data Path : Z:\pestpcbsrv\HPCHEM1\FID_A\Data\FA031419\
 Data File : FA002480.D
 Signal(s) : FID1A.CH
 Acq On : 14 Mar 2019 8:35
 Operator : DD/SJ
 Sample : MDL-GASES-04
 Misc : 10 PPMV MDL
 ALS Vial : 3 Sample Multiplier: 1

Instrument :
 FID_A
 ClientSampleId :

Integration File: autoint1.e
 Quant Time: Mar 15 10:48:40 2019
 Quant Method : Z:\pestpcbsrv\HPCHEM1\FID_A\Method\FA030919 GASES.M
 Quant Title :
 QLast Update : Wed Mar 13 17:11:45 2019
 Response via : Initial Calibration
 Integrator: ChemStation

Volume Inj. :
 Signal Phase : RT-U Plot
 Signal Info : 30M x 0.32mm

Compound	R.T.	Response	Conc Units

Target Compounds			
1) Ethane	1.784	840	7.510 ppmv
2) Ethylene	1.740	925	7.984 ppmv
3) Methane	1.486	690	10.150 ppmv

(f)=RT Delta > 1/2 Window

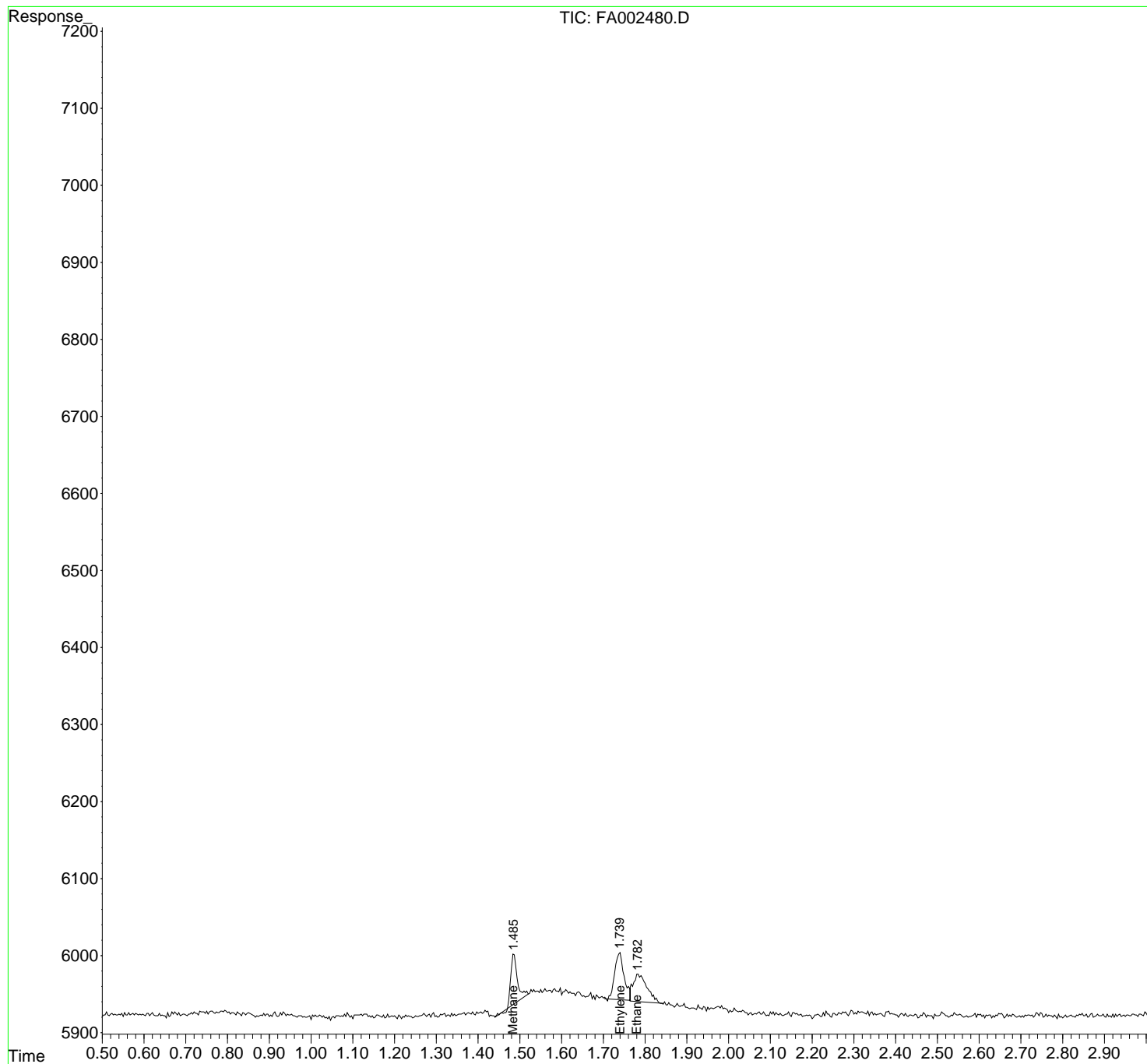
(m)=manual int.

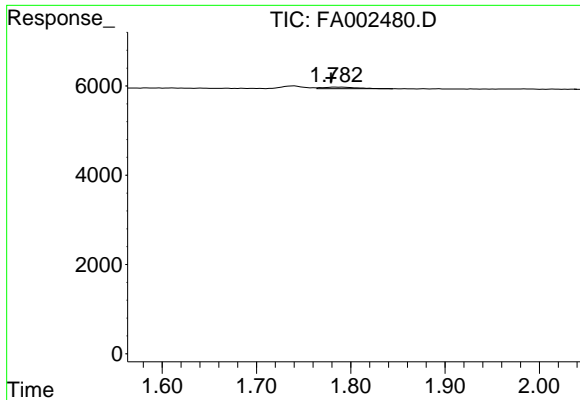
Data Path : Z:\pestpcbsrv\HPCHEM1\FID_A\Data\FA031419\
Data File : FA002480.D
Signal(s) : FID1A.CH
Acq On : 14 Mar 2019 8:35
Operator : DD/SJ
Sample : MDL-GASES-04
Misc : 10 PPMV MDL
ALS Vial : 3 Sample Multiplier: 1

Instrument :
FID_A
ClientSampleId :

Integration File: autoint1.e
Quant Time: Mar 15 10:48:40 2019
Quant Method : Z:\pestpcbsrv\HPCHEM1\FID_A\Method\FA030919 GASES.M
Quant Title :
QLast Update : Wed Mar 13 17:11:45 2019
Response via : Initial Calibration
Integrator: ChemStation

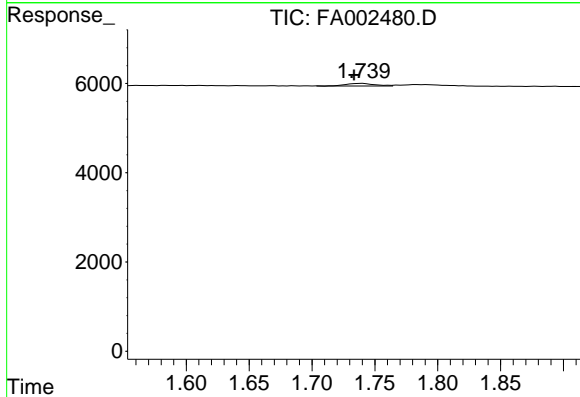
Volume Inj. :
Signal Phase : RT-U Plot
Signal Info : 30M x 0.32mm



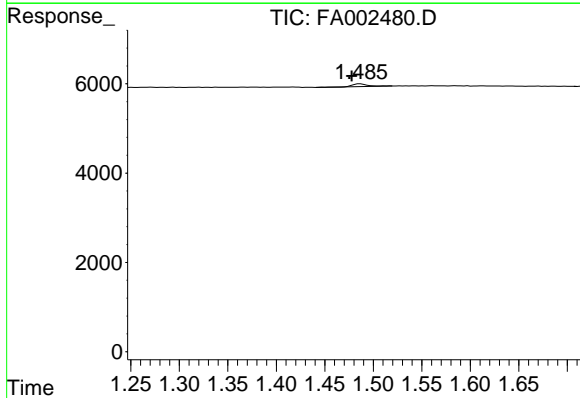


#1 Ethane
 R.T.: 1.784 min
 Delta R.T.: 0.005 min
 Response: 840
 Conc: 7.51 ppmv

Instrument :
 FID_A
 ClientSampleId :



#2 Ethylene
 R.T.: 1.740 min
 Delta R.T.: 0.006 min
 Response: 925
 Conc: 7.98 ppmv



#3 Methane
 R.T.: 1.486 min
 Delta R.T.: 0.008 min
 Response: 690
 Conc: 10.15 ppmv