

Data Path : Z:\pestpcbsrv\HPCHEM1\FID_A\Data\FA060718\
 Data File : FA002061.D
 Signal(s) : FID1A.CH
 Acq On : 7 Jun 2018 19:24
 Operator : UA/AJ
 Sample : 200 PPMV CCC
 Misc :
 ALS Vial : 30 Sample Multiplier: 1

Instrument :
 FID_A
ClientSampleId :
 200 PPMV CCC

Integration File: autoint1.e
 Quant Time: Jun 07 19:31:54 2018
 Quant Method : Y:\pestpcbsrv\HPCHEM1\FID_A\Method\FA060718 GASES.M
 Quant Title :
 QLast Update : Thu Jun 07 16:13:43 2018
 Response via : Initial Calibration
 Integrator: ChemStation

Volume Inj. :
 Signal Phase : RT-U Plot
 Signal Info : 30M x 0.32mm

Compound	R.T.	Response	Conc Units

Target Compounds			
1) Ethane	3.211	25397	189.944 ppmv
2) Ethylene	2.974	21229	174.804 ppmv
3) Methane	2.090	15638	179.619 ppmv

(f)=RT Delta > 1/2 Window

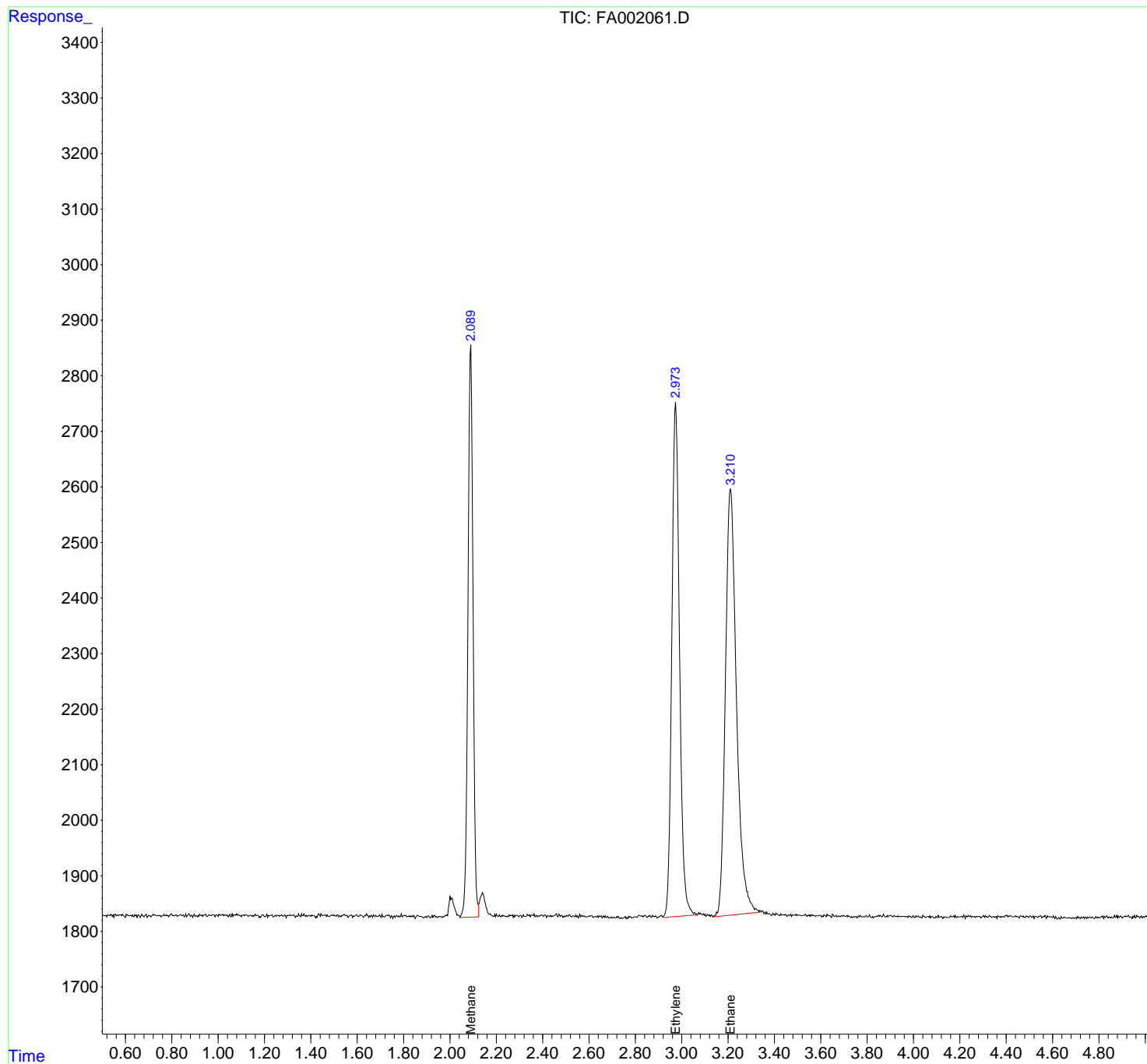
(m)=manual int.

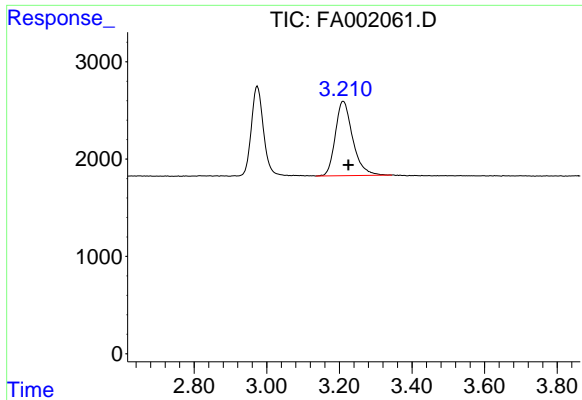
Data Path : Z:\pestpcbsrv\HPCHEM1\FID_A\Data\FA060718\
Data File : FA002061.D
Signal(s) : FID1A.CH
Acq On : 7 Jun 2018 19:24
Operator : UA/AJ
Sample : 200 PPMV CCC
Misc :
ALS Vial : 30 Sample Multiplier: 1

Instrument :
FID_A
ClientSampled :
200 PPMV CCC

Integration File: autoint1.e
Quant Time: Jun 07 19:31:54 2018
Quant Method : Y:\pestpcbsrv\HPCHEM1\FID_A\Method\FA060718 GASES.M
Quant Title :
QLast Update : Thu Jun 07 16:13:43 2018
Response via : Initial Calibration
Integrator: ChemStation

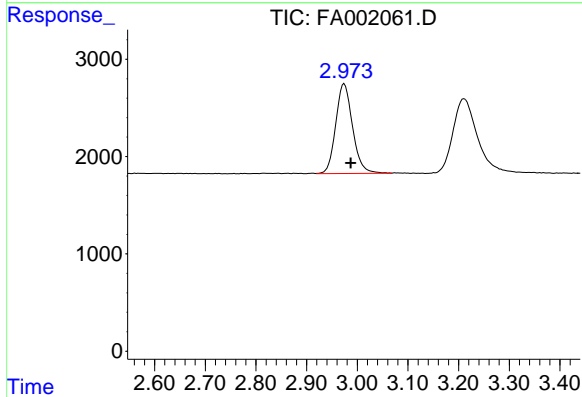
Volume Inj. :
Signal Phase : RT-U Plot
Signal Info : 30M x 0.32mm



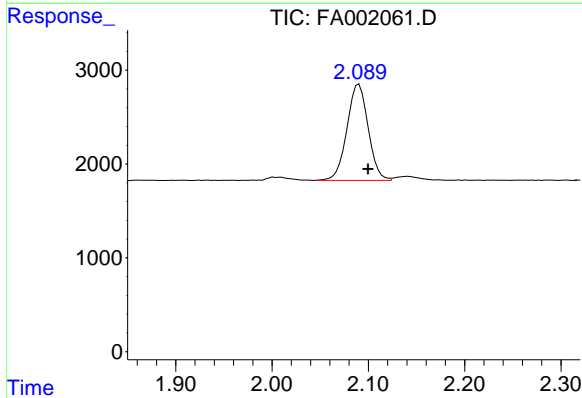


#1 Ethane
 R.T.: 3.211 min
 Delta R.T.: -0.014 min
 Response: 25397
 Conc: 189.94 ppmv

Instrument :
 FID_A
 ClientSampleId :
 200 PPMV CCC



#2 Ethylene
 R.T.: 2.974 min
 Delta R.T.: -0.013 min
 Response: 21229
 Conc: 174.80 ppmv



#3 Methane
 R.T.: 2.090 min
 Delta R.T.: -0.010 min
 Response: 15638
 Conc: 179.62 ppmv