

Data Path : Z:\pestpcbsrv\HPCHEM1\FID\_A\Data\FA060820\  
 Data File : FA002963.D  
 Signal(s) : FID1A.CH  
 Acq On : 8 Jun 2020 9:52  
 Operator : UA/AJ  
 Sample : L2920-01  
 Misc :  
 ALS Vial : 5 Sample Multiplier: 1

Instrument :  
 FID\_A  
 ClientSampleId :

Integration File: autoint1.e  
 Quant Time: Jun 08 17:50:01 2020  
 Quant Method : Z:\pestpcbsrv\HPCHEM1\FID\_A\Method\FA060520 GASES.M  
 Quant Title :  
 QLast Update : Fri Jun 05 08:58:29 2020  
 Response via : Initial Calibration  
 Integrator: ChemStation

Volume Inj. :  
 Signal Phase : RT-U Plot  
 Signal Info : 30M x 0.32mm

Compound	R.T.	Response	Conc Units
-----			
Target Compounds			
1) Ethane	2.916	3729	27.587 ppmv
2) Ethylene	2.827	934	7.942 ppmv
3) Methane	2.371	1706378	21368.656 ppmv
-----			

(f)=RT Delta > 1/2 Window

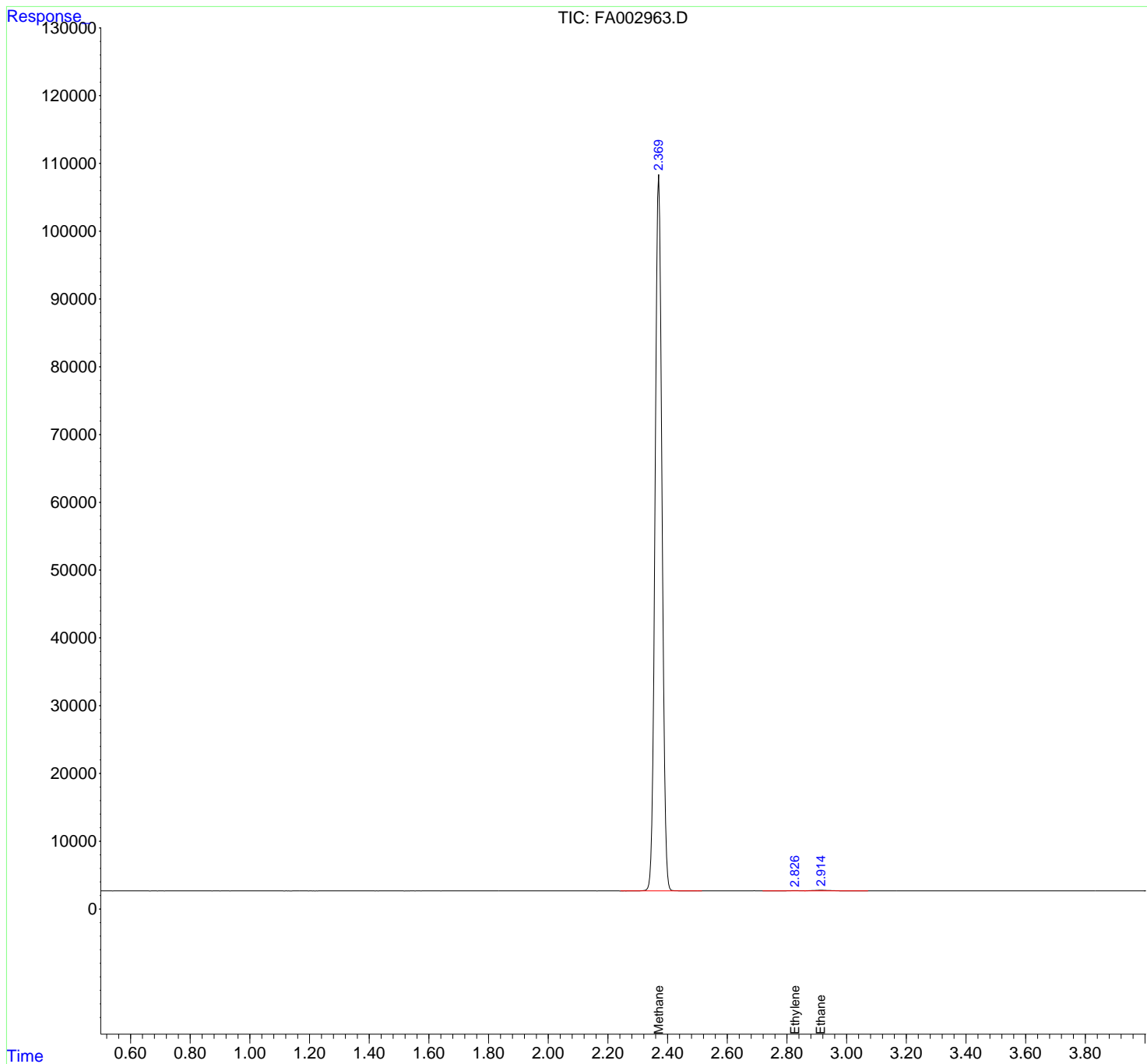
(m)=manual int.

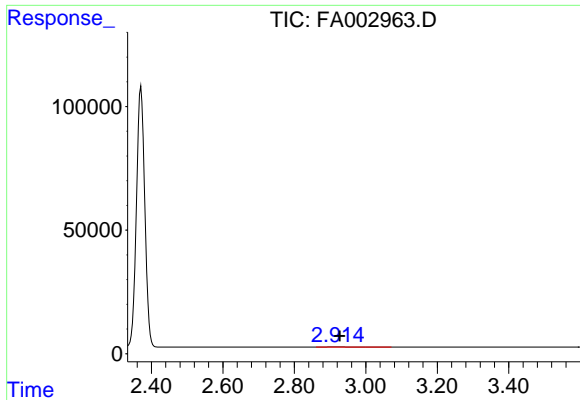
Data Path : Z:\pestpcbsrv\HPCHEM1\FID\_A\Data\FA060820\  
 Data File : FA002963.D  
 Signal(s) : FID1A.CH  
 Acq On : 8 Jun 2020 9:52  
 Operator : UA/AJ  
 Sample : L2920-01  
 Misc :  
 ALS Vial : 5 Sample Multiplier: 1

Instrument :  
 FID\_A  
 ClientSampleId :

Integration File: autoint1.e  
 Quant Time: Jun 08 17:50:01 2020  
 Quant Method : Z:\pestpcbsrv\HPCHEM1\FID\_A\Method\FA060520 GASES.M  
 Quant Title :  
 QLast Update : Fri Jun 05 08:58:29 2020  
 Response via : Initial Calibration  
 Integrator: ChemStation

Volume Inj. :  
 Signal Phase : RT-U Plot  
 Signal Info : 30M x 0.32mm





#1 Ethane

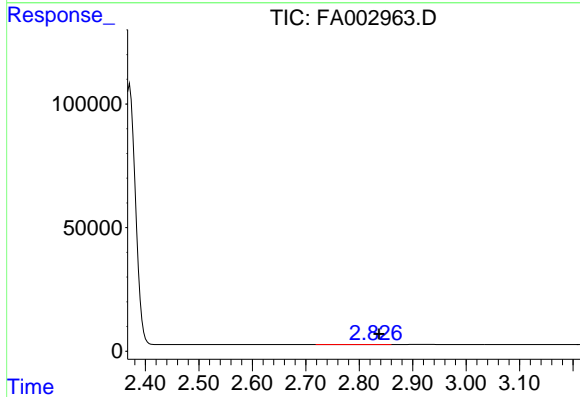
R.T.: 2.916 min

Delta R.T.: -0.011 min

Response: 3729

Conc: 27.59 ppmv

Instrument :  
FID\_A  
ClientSampleId :



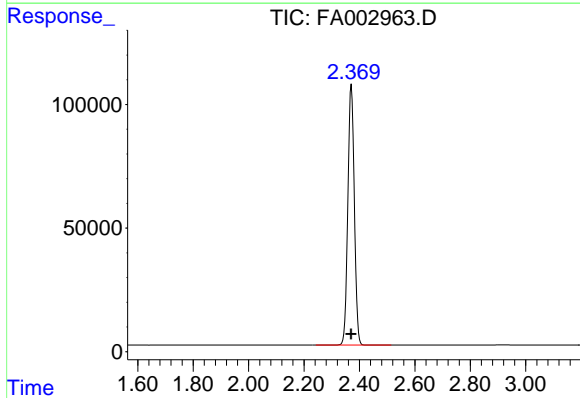
#2 Ethylene

R.T.: 2.827 min

Delta R.T.: -0.010 min

Response: 934

Conc: 7.94 ppmv



#3 Methane

R.T.: 2.371 min

Delta R.T.: 0.001 min

Response: 1706378

Conc: 21368.66 ppmv