

Data Path : Z:\pestpcbsrv\HPCHEM1\FID_A\Data\FA060820\
 Data File : FA002978.D
 Signal(s) : FID1A.CH
 Acq On : 8 Jun 2020 12:27
 Operator : UA/AJ
 Sample : L2920-11
 Misc :
 ALS Vial : 21 Sample Multiplier: 1

Instrument :
 FID_A
ClientSampleId :
 EPA-MW-41-OB-06042020

Integration File: autoint1.e
 Quant Time: Jun 08 17:50:46 2020
 Quant Method : Z:\pestpcbsrv\HPCHEM1\FID_A\Method\FA060520 GASES.M
 Quant Title :
 QLast Update : Fri Jun 05 08:58:29 2020
 Response via : Initial Calibration
 Integrator: ChemStation

Volume Inj. :
 Signal Phase : RT-U Plot
 Signal Info : 30M x 0.32mm

Compound	R.T.	Response	Conc Units

Target Compounds			
3) Methane	2.358	581991	7288.161 ppmv

(f)=RT Delta > 1/2 Window

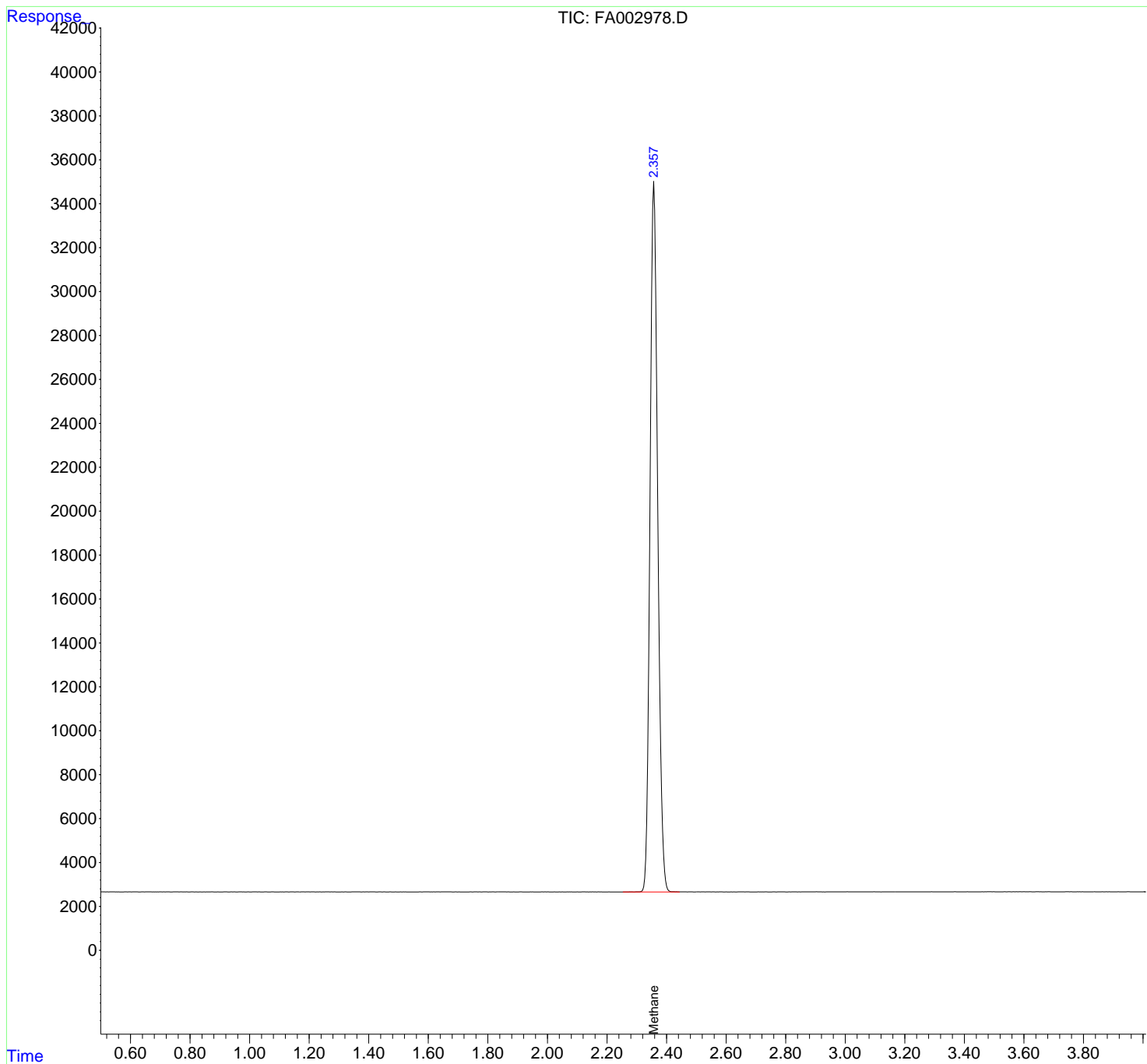
(m)=manual int.

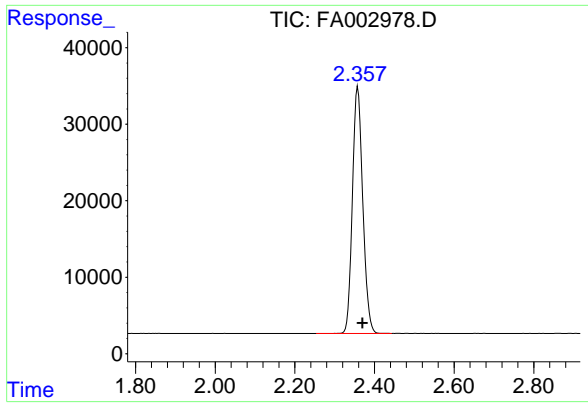
Data Path : Z:\pestpcbsrv\HPCHEM1\FID_A\Data\FA060820\
 Data File : FA002978.D
 Signal(s) : FID1A.CH
 Acq On : 8 Jun 2020 12:27
 Operator : UA/AJ
 Sample : L2920-11
 Misc :
 ALS Vial : 21 Sample Multiplier: 1

Instrument :
 FID_A
ClientSampleId :
 EPA-MW-41-OB-06042020

Integration File: autoint1.e
 Quant Time: Jun 08 17:50:46 2020
 Quant Method : Z:\pestpcbsrv\HPCHEM1\FID_A\Method\FA060520 GASES.M
 Quant Title :
 QLast Update : Fri Jun 05 08:58:29 2020
 Response via : Initial Calibration
 Integrator: ChemStation

Volume Inj. :
 Signal Phase : RT-U Plot
 Signal Info : 30M x 0.32mm





#3 Methane

R.T.: 2.358 min
Delta R.T.: -0.012 min
Response: 581991
Conc: 7288.16 ppmv

Instrument :
FID_A
ClientSampleId :
EPA-MW-41-OB-06042020