

Data Path : Z:\pestpcbsrv\HPCHEM1\FID_A\Data\FA061020\
 Data File : FA003008.D
 Signal(s) : FID1A.CH
 Acq On : 10 Jun 2020 10:58
 Operator : UA/AJ
 Sample : L2952-02
 Misc :
 ALS Vial : 7 Sample Multiplier: 1

Instrument :
 FID_A
ClientSampleId :
 EPA-MW-13-BR-06082020

Integration File: autoint1.e
 Quant Time: Jun 10 15:07:21 2020
 Quant Method : Z:\pestpcbsrv\HPCHEM1\FID_A\Method\FA060520 GASES.M
 Quant Title :
 QLast Update : Fri Jun 05 08:58:29 2020
 Response via : Initial Calibration
 Integrator: ChemStation

Volume Inj. :
 Signal Phase : RT-U Plot
 Signal Info : 30M x 0.32mm

Compound	R.T.	Response	Conc Units

Target Compounds			
3) Methane	2.366	1745	21.849 ppmv

(f)=RT Delta > 1/2 Window

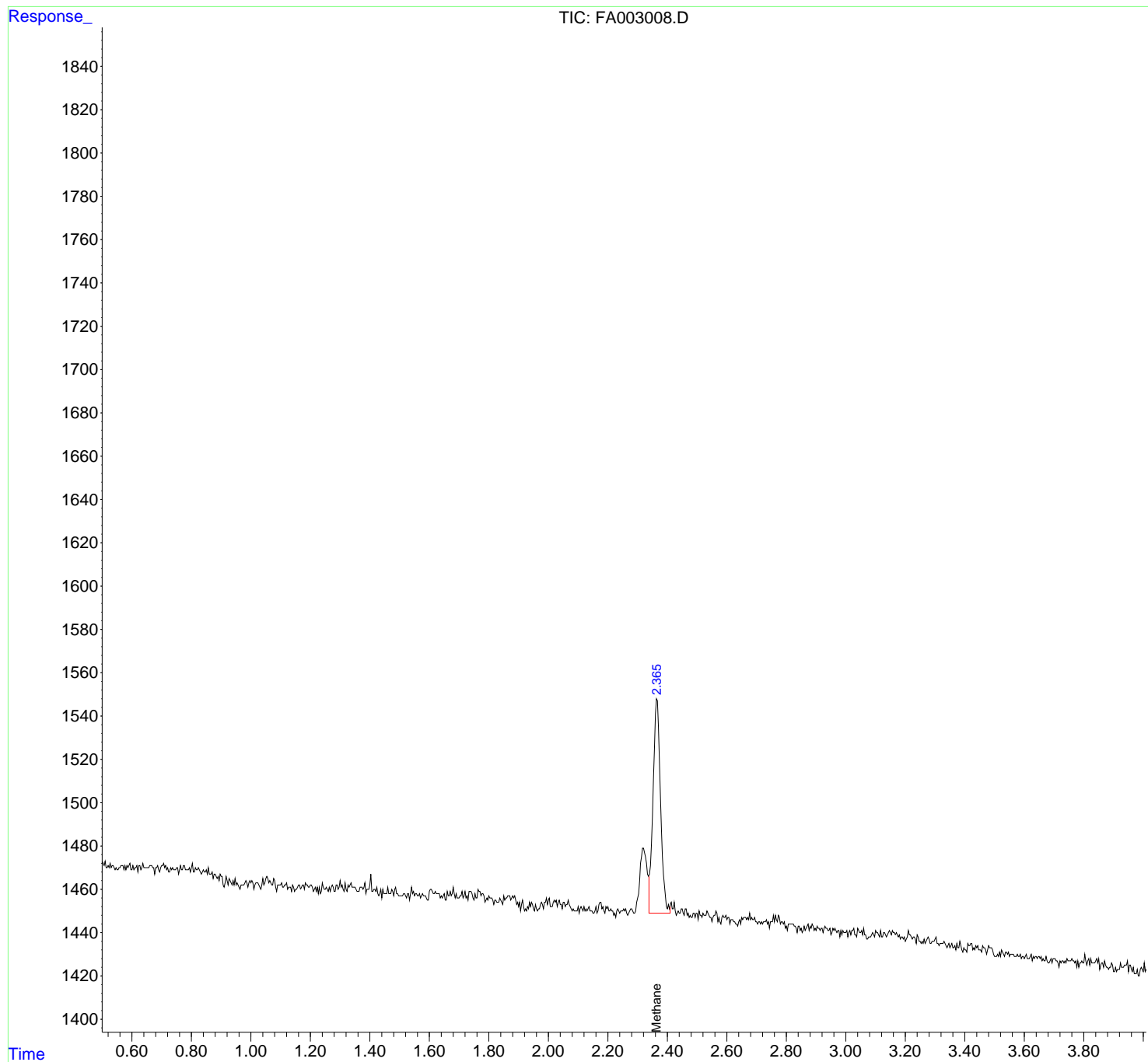
(m)=manual int.

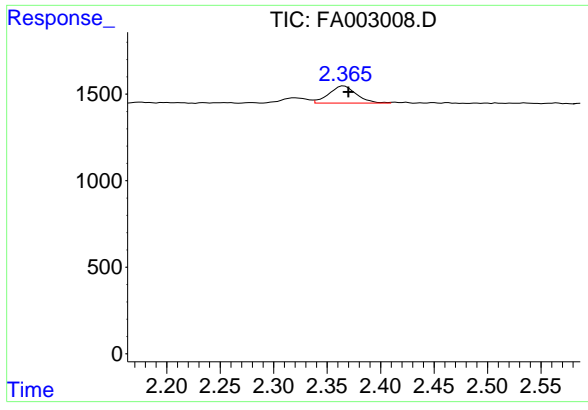
Data Path : Z:\pestpcbsrv\HPCHEM1\FID_A\Data\FA061020\
Data File : FA003008.D
Signal(s) : FID1A.CH
Acq On : 10 Jun 2020 10:58
Operator : UA/AJ
Sample : L2952-02
Misc :
ALS Vial : 7 Sample Multiplier: 1

Instrument :
FID_A
ClientSampleId :
EPA-MW-13-BR-06082020

Integration File: autoint1.e
Quant Time: Jun 10 15:07:21 2020
Quant Method : Z:\pestpcbsrv\HPCHEM1\FID_A\Method\FA060520 GASES.M
Quant Title :
QLast Update : Fri Jun 05 08:58:29 2020
Response via : Initial Calibration
Integrator: ChemStation

Volume Inj. :
Signal Phase : RT-U Plot
Signal Info : 30M x 0.32mm





#3 Methane

R.T.: 2.366 min
Delta R.T.: -0.004 min
Response: 1745
Conc: 21.85 ppmv

Instrument :
FID_A
ClientSampleId :
EPA-MW-13-BR-06082020