

Data Path : Z:\pestpcbsrv\HPCHEM1\FID_A\Data\FA061020\
 Data File : FA003013.D
 Signal(s) : FID1A.CH
 Acq On : 10 Jun 2020 12:14
 Operator : UA/AJ
 Sample : 200 PPM GASES CCC
 Misc :
 ALS Vial : 12 Sample Multiplier: 1

Instrument :
 FID_A
ClientSampleId :
 200 PPM GASES CCC

Integration File: autoint1.e
 Quant Time: Jun 10 15:07:36 2020
 Quant Method : Z:\pestpcbsrv\HPCHEM1\FID_A\Method\FA060520 GASES.M
 Quant Title :
 QLast Update : Fri Jun 05 08:58:29 2020
 Response via : Initial Calibration
 Integrator: ChemStation

Volume Inj. :
 Signal Phase : RT-U Plot
 Signal Info : 30M x 0.32mm

Compound	R.T.	Response	Conc Units

Target Compounds			
1) Ethane	2.928	28296	209.357 ppmv
2) Ethylene	2.838	23045	196.045 ppmv
3) Methane	2.369	18147	227.250 ppmv

(f)=RT Delta > 1/2 Window

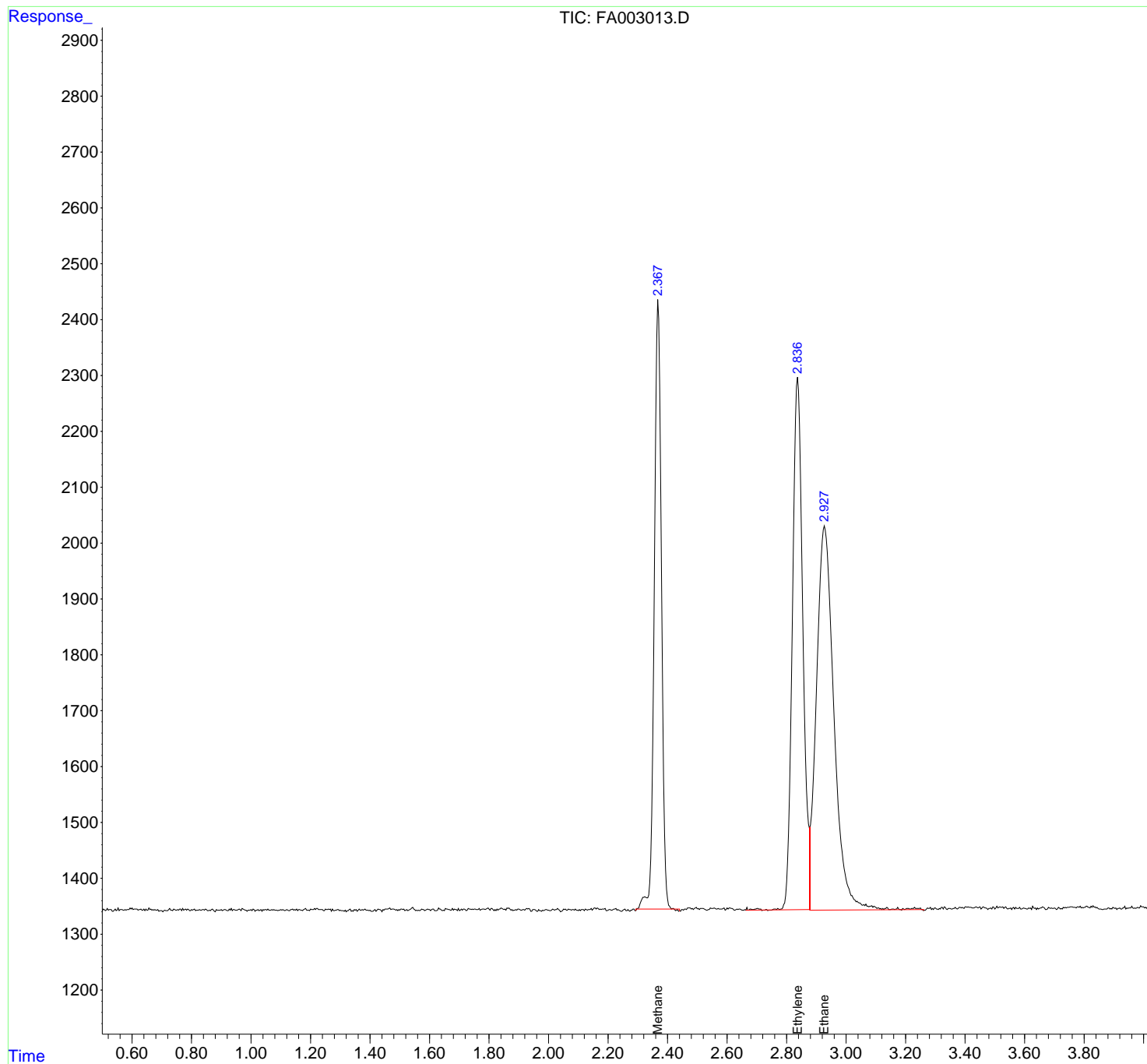
(m)=manual int.

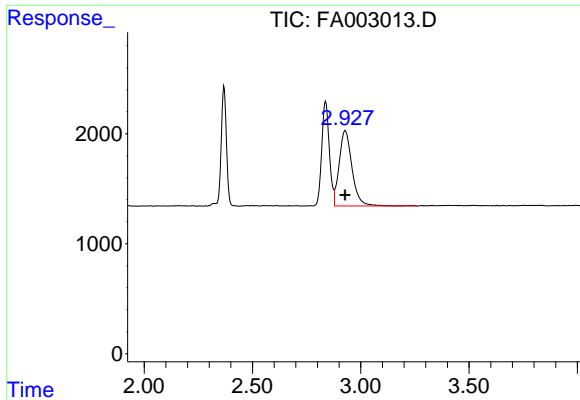
Data Path : Z:\pestpcbsrv\HPCHEM1\FID_A\Data\FA061020\
Data File : FA003013.D
Signal(s) : FID1A.CH
Acq On : 10 Jun 2020 12:14
Operator : UA/AJ
Sample : 200 PPM GASES CCC
Misc :
ALS Vial : 12 Sample Multiplier: 1

Instrument :
FID_A
ClientSampleId :
200 PPM GASES CCC

Integration File: autoint1.e
Quant Time: Jun 10 15:07:36 2020
Quant Method : Z:\pestpcbsrv\HPCHEM1\FID_A\Method\FA060520 GASES.M
Quant Title :
QLast Update : Fri Jun 05 08:58:29 2020
Response via : Initial Calibration
Integrator: ChemStation

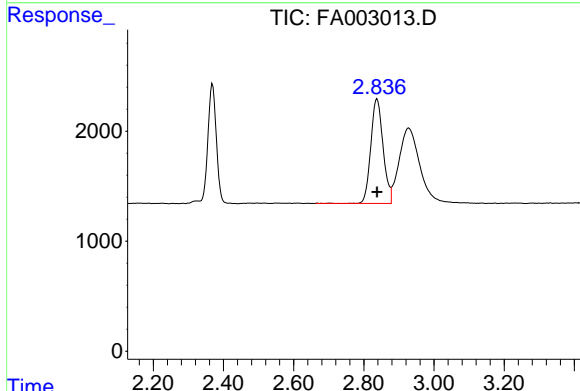
Volume Inj. :
Signal Phase : RT-U Plot
Signal Info : 30M x 0.32mm



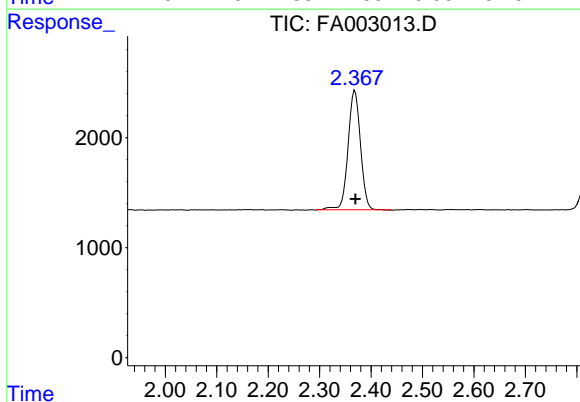


#1 Ethane
 R.T.: 2.928 min
 Delta R.T.: 0.001 min
 Response: 28296
 Conc: 209.36 ppmv

Instrument :
 FID_A
ClientSampleId :
 200 PPM GASES CCC



#2 Ethylene
 R.T.: 2.838 min
 Delta R.T.: 0.000 min
 Response: 23045
 Conc: 196.05 ppmv



#3 Methane
 R.T.: 2.369 min
 Delta R.T.: -0.001 min
 Response: 18147
 Conc: 227.25 ppmv