

Data Path : Z:\pestpcbsrv\HPCHEM1\FID_A\Data\FA061020\
 Data File : FA003026.D
 Signal(s) : FID1A.CH
 Acq On : 10 Jun 2020 14:36
 Operator : UA/AJ
 Sample : L2952-10DL 100X
 Misc :
 ALS Vial : 25 Sample Multiplier: 1

Instrument :
 FID_A
ClientSampleId :
 PZ-02-ZU-06082020DL

Integration File: autoint1.e
 Quant Time: Jun 10 15:08:15 2020
 Quant Method : Z:\pestpcbsrv\HPCHEM1\FID_A\Method\FA060520 GASES.M
 Quant Title :
 QLast Update : Fri Jun 05 08:58:29 2020
 Response via : Initial Calibration
 Integrator: ChemStation

Volume Inj. :
 Signal Phase : RT-U Plot
 Signal Info : 30M x 0.32mm

Compound	R.T.	Response	Conc Units

Target Compounds			
3) Methane	2.364	32660	408.998 ppmv

(f)=RT Delta > 1/2 Window

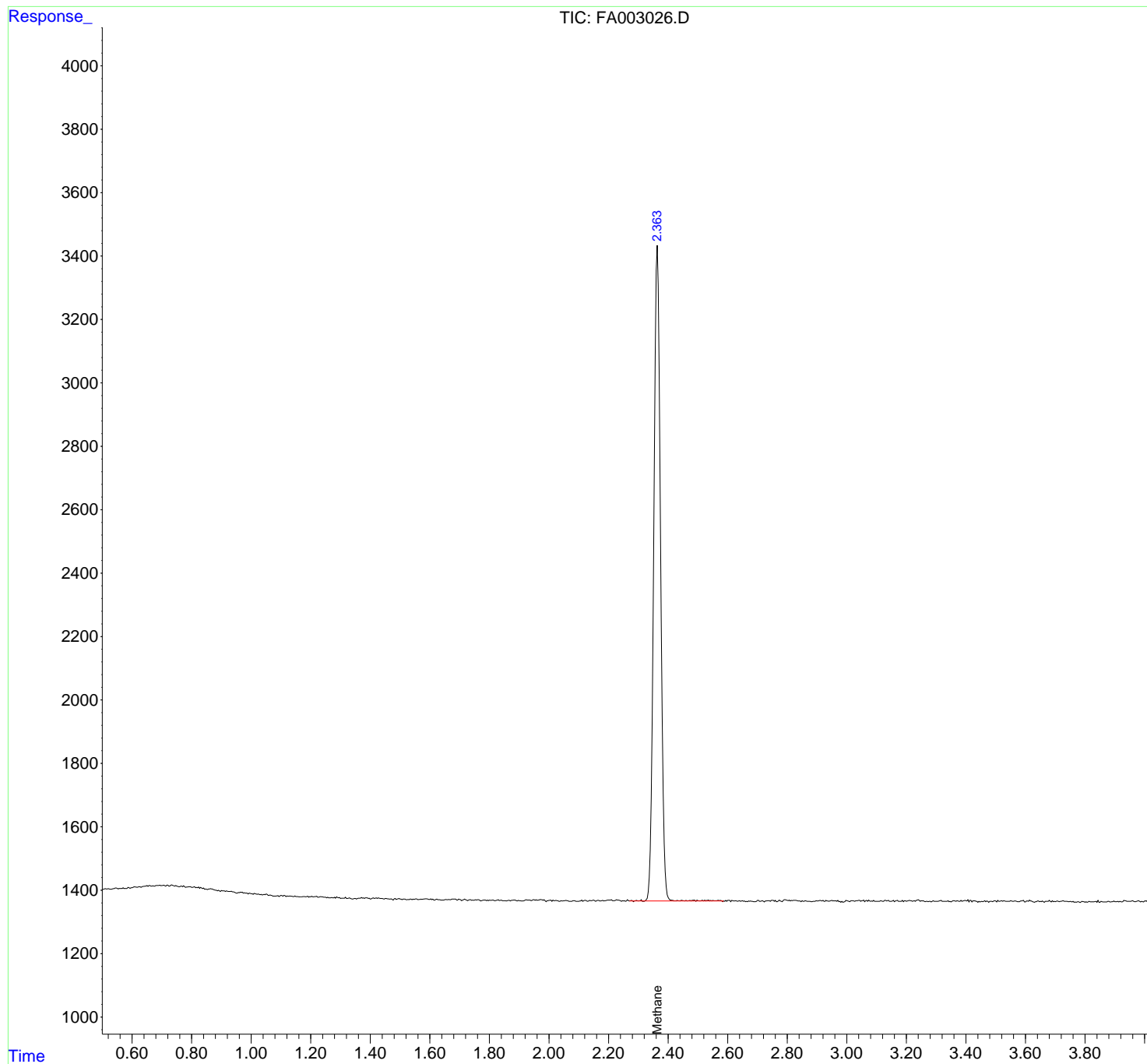
(m)=manual int.

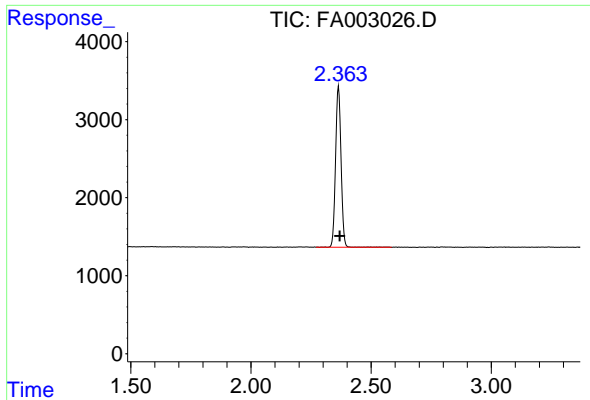
Data Path : Z:\pestpcbsrv\HPCHEM1\FID_A\Data\FA061020\
Data File : FA003026.D
Signal(s) : FID1A.CH
Acq On : 10 Jun 2020 14:36
Operator : UA/AJ
Sample : L2952-10DL 100X
Misc :
ALS Vial : 25 Sample Multiplier: 1

Instrument :
FID_A
ClientSampled :
PZ-02-ZU-06082020DL

Integration File: autoint1.e
Quant Time: Jun 10 15:08:15 2020
Quant Method : Z:\pestpcbsrv\HPCHEM1\FID_A\Method\FA060520 GASES.M
Quant Title :
QLast Update : Fri Jun 05 08:58:29 2020
Response via : Initial Calibration
Integrator: ChemStation

Volume Inj. :
Signal Phase : RT-U Plot
Signal Info : 30M x 0.32mm





#3 Methane

R.T.: 2.364 min
Delta R.T.: -0.005 min
Response: 32660
Conc: 409.00 ppmv

Instrument :
FID_A
ClientSampled :
PZ-02-ZU-06082020DL