

Data Path : Z:\pestpcbsrv\HPCHEM1\FID_A\Data\FA061523\
Data File : FA003905.D
Signal(s) : FID1A.CH
Acq On : 15 Jun 2023 8:54
Operator : YP\AJ
Sample : 300 PPMV GASES ICC
Misc :
ALS Vial : 2 Sample Multiplier: 1

Instrument :
FID_A
ClientSampleId :

Integration File: autoint1.e
Quant Time: Jun 15 08:50:53 2023
Quant Method : Z:\pestpcbsrv\HPCHEM1\FID_A\Method\FA061523 GASES.M
Quant Title :
QLast Update : Thu Jun 15 08:48:15 2023
Response via : Initial Calibration
Integrator: ChemStation

Volume Inj. :
Signal Phase : RT-U Plot
Signal Info : 30M x 0.32mm

Compound	R.T.	Response	Conc Units

Target Compounds			
1) Ethane	1.723	90946	302.204 ppmv
2) Ethylene	1.657	84412	298.129 ppmv
3) Methane	1.320	45406	298.894 ppmv

(f)=RT Delta > 1/2 Window

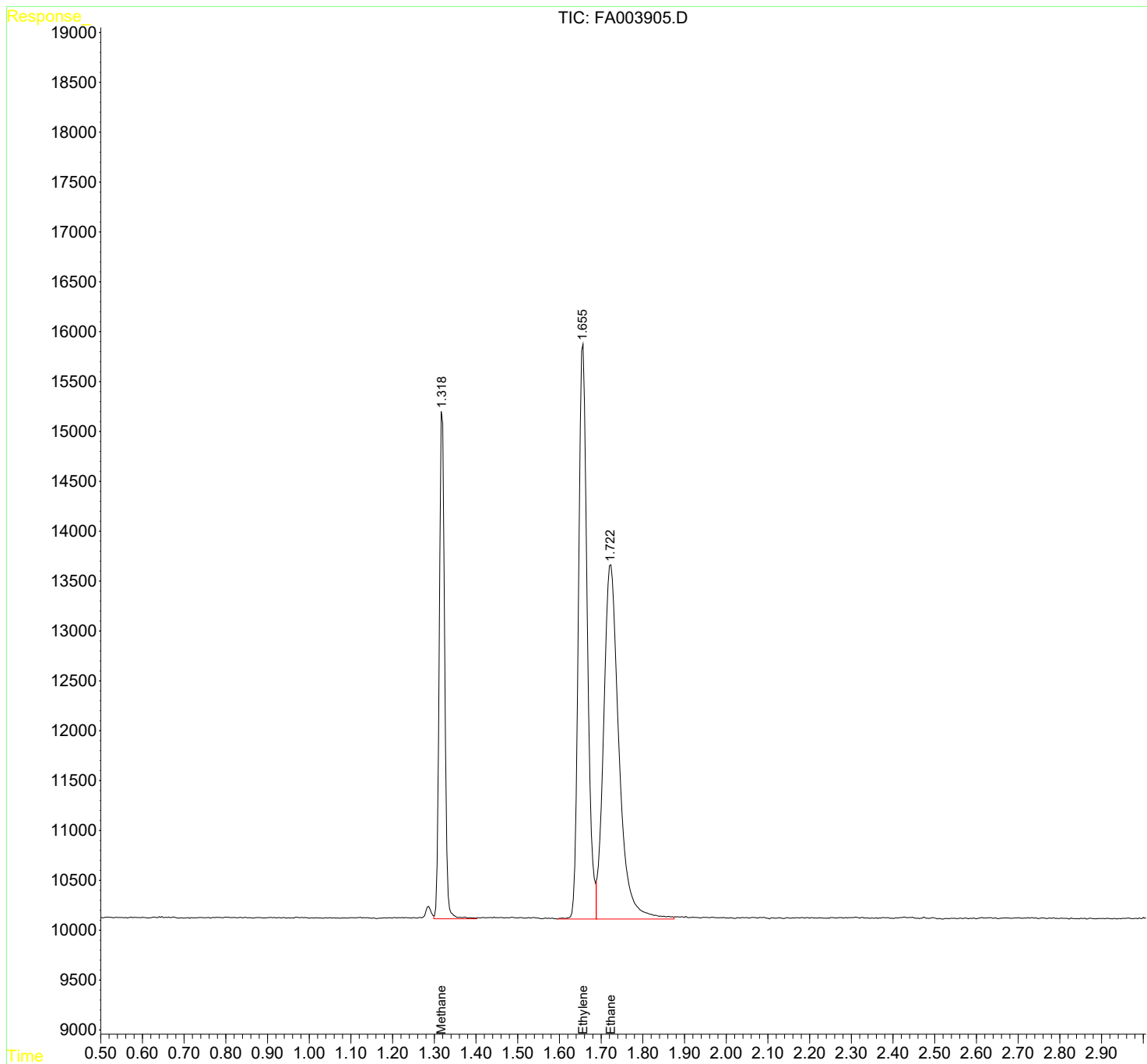
(m)=manual int.

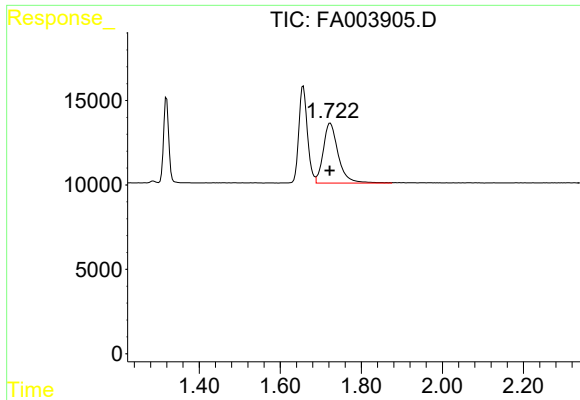
Data Path : Z:\pestpcbsrv\HPCHEM1\FID_A\Data\FA061523\
 Data File : FA003905.D
 Signal(s) : FID1A.CH
 Acq On : 15 Jun 2023 8:54
 Operator : YP\AJ
 Sample : 300 PPMV GASES ICC
 Misc :
 ALS Vial : 2 Sample Multiplier: 1

Instrument :
 FID_A
 ClientSampleId :

Integration File: autoint1.e
 Quant Time: Jun 15 08:50:53 2023
 Quant Method : Z:\pestpcbsrv\HPCHEM1\FID_A\Method\FA061523 GASES.M
 Quant Title :
 QLast Update : Thu Jun 15 08:48:15 2023
 Response via : Initial Calibration
 Integrator: ChemStation

Volume Inj. :
 Signal Phase : RT-U Plot
 Signal Info : 30M x 0.32mm

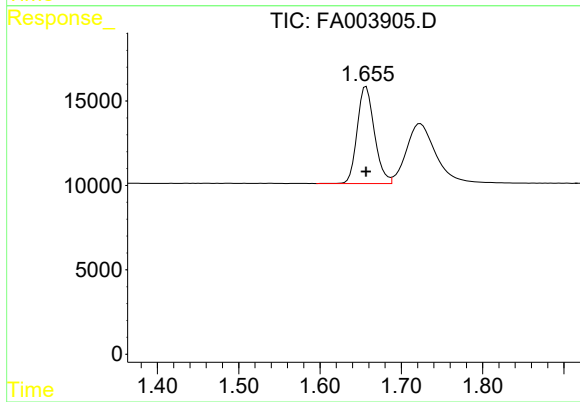




#1 Ethane

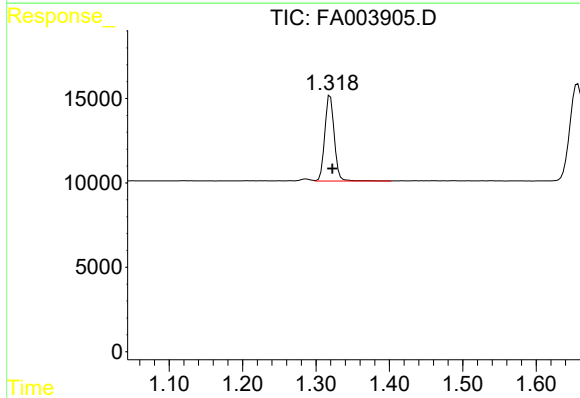
R.T.: 1.723 min
 Delta R.T.: 0.001 min
 Response: 90946
 Conc: 302.20 ppmv

Instrument :
 FID_A
 ClientSampleId :



#2 Ethylene

R.T.: 1.657 min
 Delta R.T.: 0.000 min
 Response: 84412
 Conc: 298.13 ppmv



#3 Methane

R.T.: 1.320 min
 Delta R.T.: -0.003 min
 Response: 45406
 Conc: 298.89 ppmv