

Data Path : Z:\pestpcbsrv\HPCHEM1\FID\_A\Data\FA061718\  
 Data File : FA002076.D  
 Signal(s) : FID1A.CH  
 Acq On : 17 Jun 2018 15:18  
 Operator : UA/AJ  
 Sample : J3477-06  
 Misc :  
 ALS Vial : 6 Sample Multiplier: 1

Instrument :  
 FID\_A  
 ClientSampleId :  
 S36-0140

Integration File: autoint1.e  
 Quant Time: Jun 22 10:59:20 2018  
 Quant Method : Z:\pestpcbsrv\HPCHEM1\FID\_A\Method\FA060718 GASES.M  
 Quant Title :  
 QLast Update : Fri Jun 22 10:56:52 2018  
 Response via : Initial Calibration  
 Integrator: ChemStation

Volume Inj. :  
 Signal Phase : RT-U Plot  
 Signal Info : 30M x 0.32mm

Compound	R.T.	Response	Conc Units
-----			
Target Compounds			
3) Methane	2.078	85259	979.267 ppmv
-----			

(f)=RT Delta > 1/2 Window

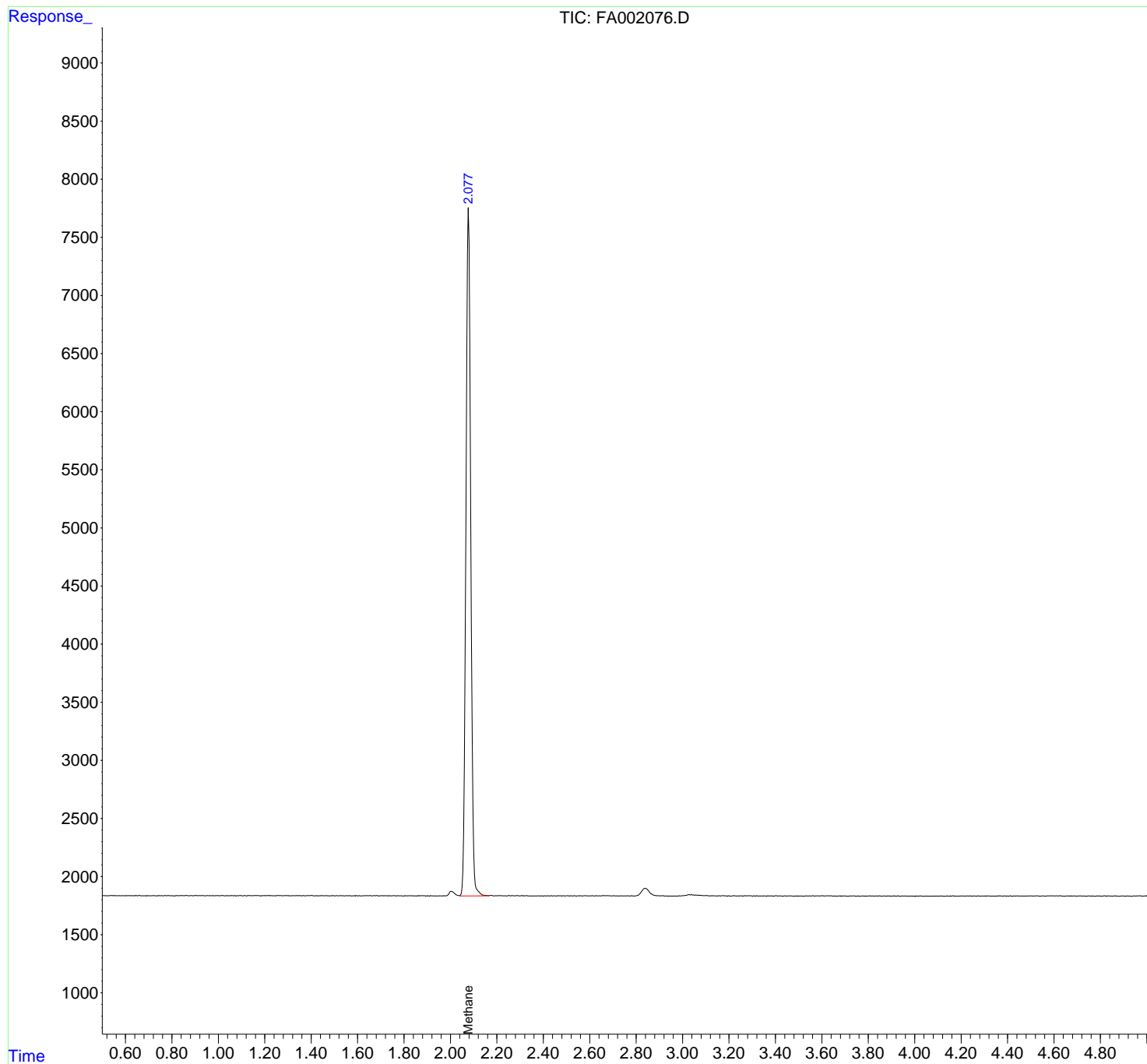
(m)=manual int.

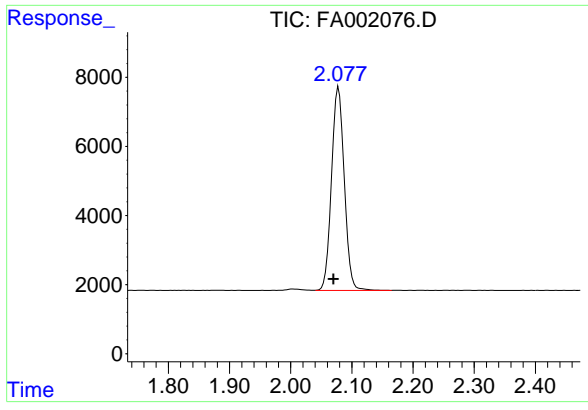
Data Path : Z:\pestpcbsrv\HPCHEM1\FID\_A\Data\FA061718\  
Data File : FA002076.D  
Signal(s) : FID1A.CH  
Acq On : 17 Jun 2018 15:18  
Operator : UA/AJ  
Sample : J3477-06  
Misc :  
ALS Vial : 6 Sample Multiplier: 1

Instrument :  
FID\_A  
ClientSampled :  
S36-0140

Integration File: autoint1.e  
Quant Time: Jun 22 10:59:20 2018  
Quant Method : Z:\pestpcbsrv\HPCHEM1\FID\_A\Method\FA060718 GASES.M  
Quant Title :  
QLast Update : Fri Jun 22 10:56:52 2018  
Response via : Initial Calibration  
Integrator: ChemStation

Volume Inj. :  
Signal Phase : RT-U Plot  
Signal Info : 30M x 0.32mm





#3 Methane  
R.T.: 2.078 min  
Delta R.T.: 0.008 min  
Response: 85259  
Conc: 979.27 ppmv

**Instrument :**  
FID\_A  
**ClientSampleId :**  
S36-0140