

Data Path : Z:\pestpcbsrv\HPCHEM1\FID_A\Data\FA071222\
 Data File : FA003387.D
 Signal(s) : FID1A.CH
 Acq On : 12 Jul 2022 12:06
 Operator : SJ/MA
 Sample : 300 PPMV GASES ICC
 Misc :
 ALS Vial : 2 Sample Multiplier: 1

Instrument :
 FID_A
ClientSampleId :
 300 PPMV GASES ICC

Integration File: autoint1.e
 Quant Time: Jul 12 13:07:11 2022
 Quant Method : Z:\pestpcbsrv\HPCHEM1\FID_A\Method\FA071222 GASES.M
 Quant Title :
 QLast Update : Tue Jul 12 13:05:05 2022
 Response via : Initial Calibration
 Integrator: ChemStation

Volume Inj. :
 Signal Phase : RT-U Plot
 Signal Info : 30M x 0.32mm

Compound	R.T.	Response	Conc Units

Target Compounds			
1) Ethane	1.798	67788	295.030 ppmv
2) Ethylene	1.709	66457	293.831 ppmv
3) Methane	1.322	39459	302.894 ppmv

(f)=RT Delta > 1/2 Window

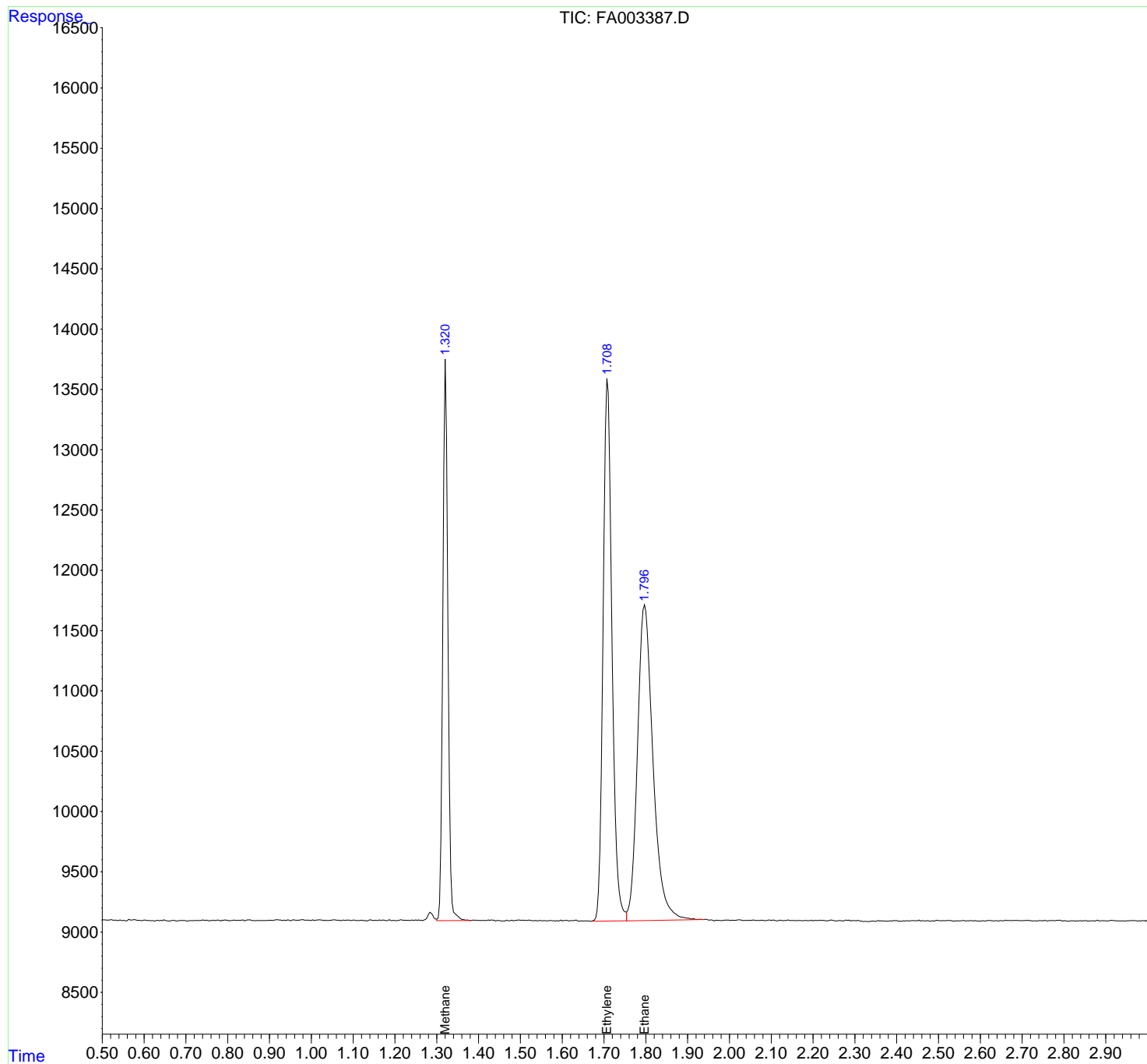
(m)=manual int.

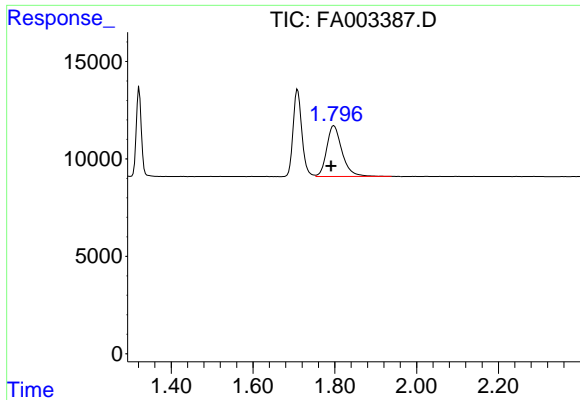
Data Path : Z:\pestpcbsrv\HPCHEM1\FID_A\Data\FA071222\
Data File : FA003387.D
Signal(s) : FID1A.CH
Acq On : 12 Jul 2022 12:06
Operator : SJ/MA
Sample : 300 PPMV GASES ICC
Misc :
ALS Vial : 2 Sample Multiplier: 1

Instrument :
FID_A
ClientSampleId :
300 PPMV GASES ICC

Integration File: autoint1.e
Quant Time: Jul 12 13:07:11 2022
Quant Method : Z:\pestpcbsrv\HPCHEM1\FID_A\Method\FA071222 GASES.M
Quant Title :
QLast Update : Tue Jul 12 13:05:05 2022
Response via : Initial Calibration
Integrator: ChemStation

Volume Inj. :
Signal Phase : RT-U Plot
Signal Info : 30M x 0.32mm

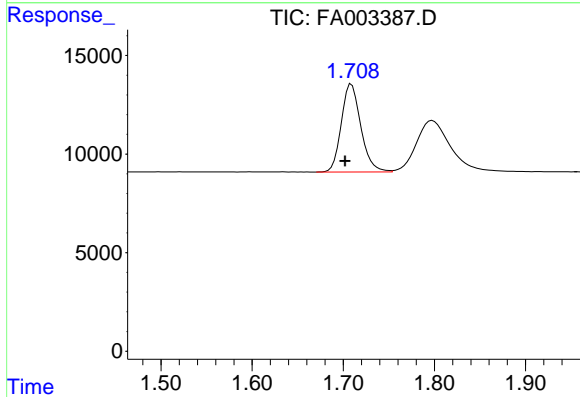




#1 Ethane

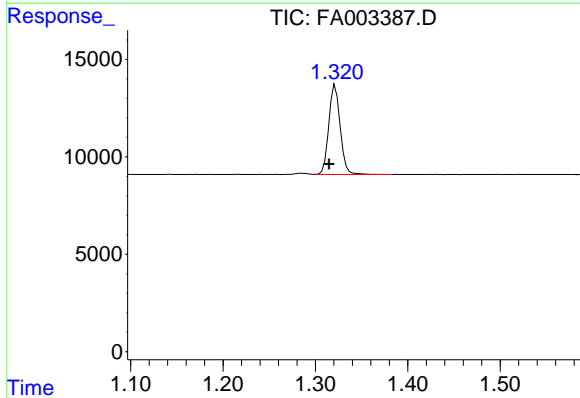
R.T.: 1.798 min
 Delta R.T.: 0.007 min
 Response: 67788
 Conc: 295.03 ppmv

Instrument :
 FID_A
 ClientSampleId :
 300 PPMV GASES ICC



#2 Ethylene

R.T.: 1.709 min
 Delta R.T.: 0.007 min
 Response: 66457
 Conc: 293.83 ppmv



#3 Methane

R.T.: 1.322 min
 Delta R.T.: 0.007 min
 Response: 39459
 Conc: 302.89 ppmv