

Data Path : Z:\pestpcbsrv\HPCHEM1\FID_A\Data\FA072619\
Data File : FA002604.D
Signal(s) : FID1A.CH
Acq On : 26 Jul 2019 10:29
Operator : UA/AJ
Sample : BSA0726G1
Misc :
ALS Vial : 5 Sample Multiplier: 1

Instrument :
FID_A
ClientSampleId :

Integration File: autoint1.e
Quant Time: Jul 26 14:44:02 2019
Quant Method : Z:\pestpcbsrv\HPCHEM1\FID_A\Method\FA072519 GASES.M
Quant Title :
QLast Update : Thu Jul 25 11:16:54 2019
Response via : Initial Calibration
Integrator: ChemStation

Volume Inj. :
Signal Phase : RT-U Plot
Signal Info : 30M x 0.32mm

| Compound | R.T. | Response | Conc Units |
|------------------|-------|----------|--------------|
| ----- | | | |
| Target Compounds | | | |
| 1) Ethane | 3.611 | 23003 | 201.163 ppmv |
| 2) Ethylene | 3.393 | 19227 | 189.940 ppmv |
| 3) Methane | 2.503 | 16232 | 204.136 ppmv |
| ----- | | | |

(f)=RT Delta > 1/2 Window

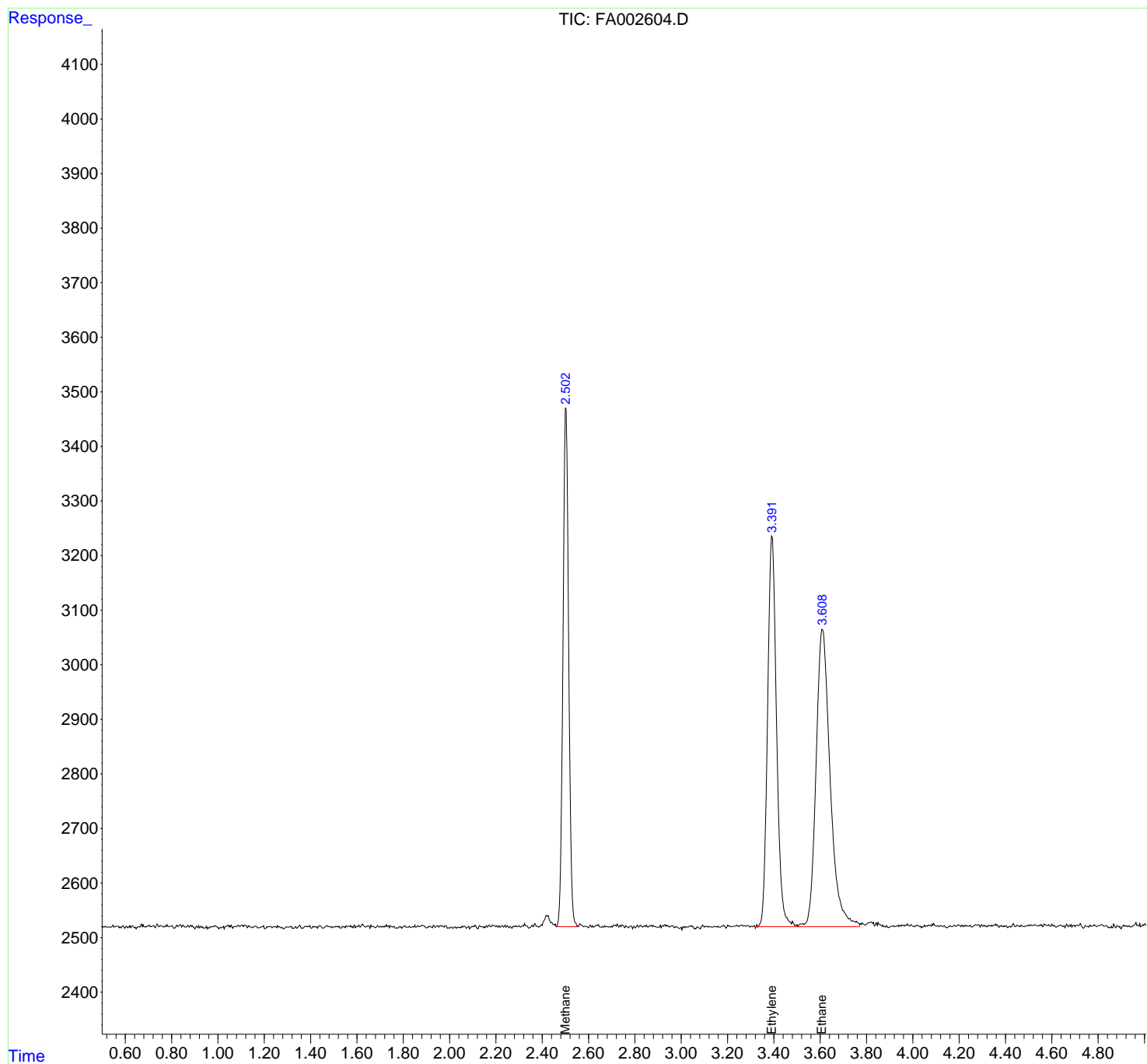
(m)=manual int.

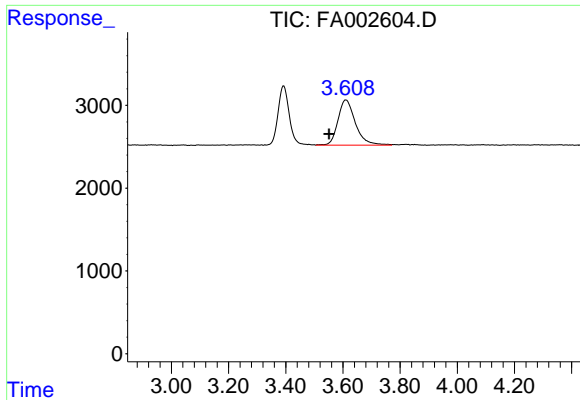
Data Path : Z:\pestpcbsrv\HPCHEM1\FID_A\Data\FA072619\
 Data File : FA002604.D
 Signal(s) : FID1A.CH
 Acq On : 26 Jul 2019 10:29
 Operator : UA/AJ
 Sample : BSA0726G1
 Misc :
 ALS Vial : 5 Sample Multiplier: 1

Instrument :
 FID_A
 ClientSampleId :

Integration File: autoint1.e
 Quant Time: Jul 26 14:44:02 2019
 Quant Method : Z:\pestpcbsrv\HPCHEM1\FID_A\Method\FA072519 GASES.M
 Quant Title :
 QLast Update : Thu Jul 25 11:16:54 2019
 Response via : Initial Calibration
 Integrator: ChemStation

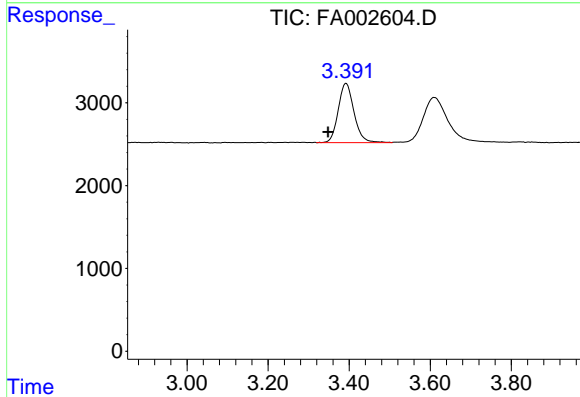
Volume Inj. :
 Signal Phase : RT-U Plot
 Signal Info : 30M x 0.32mm



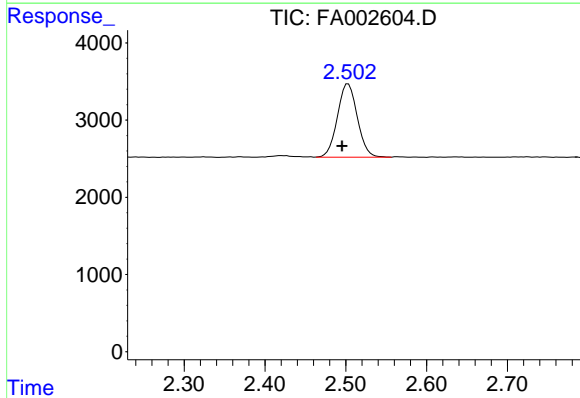


#1 Ethane
 R.T.: 3.611 min
 Delta R.T.: 0.060 min
 Response: 23003
 Conc: 201.16 ppmv

Instrument :
 FID_A
 ClientSampleId :



#2 Ethylene
 R.T.: 3.393 min
 Delta R.T.: 0.045 min
 Response: 19227
 Conc: 189.94 ppmv



#3 Methane
 R.T.: 2.503 min
 Delta R.T.: 0.007 min
 Response: 16232
 Conc: 204.14 ppmv