

Data Path : Z:\pestpcbsrv\HPCHEM1\FID_A\Data\FA072720\
 Data File : FA003050.D
 Signal(s) : FID1A.CH
 Acq On : 27 Jul 2020 15:44
 Operator : UA/AJ
 Sample : BSA0727G2
 Misc :
 ALS Vial : 10 Sample Multiplier: 1

Instrument :
 FID_A
 ClientSampleId :

Integration File: autoint1.e
 Quant Time: Jul 31 13:03:58 2020
 Quant Method : Z:\pestpcbsrv\HPCHEM1\FID_A\Method\FA072720 GASES.M
 Quant Title :
 QLast Update : Mon Jul 27 15:00:50 2020
 Response via : Initial Calibration
 Integrator: ChemStation

Volume Inj. :
 Signal Phase : RT-U Plot
 Signal Info : 30M x 0.32mm

Compound	R.T.	Response	Conc Units

Target Compounds			
1) Ethane	2.869	19849	195.458 ppmv
2) Ethylene	2.795	18406	193.066 ppmv
3) Methane	2.363	12887	205.952 ppmv

(f)=RT Delta > 1/2 Window

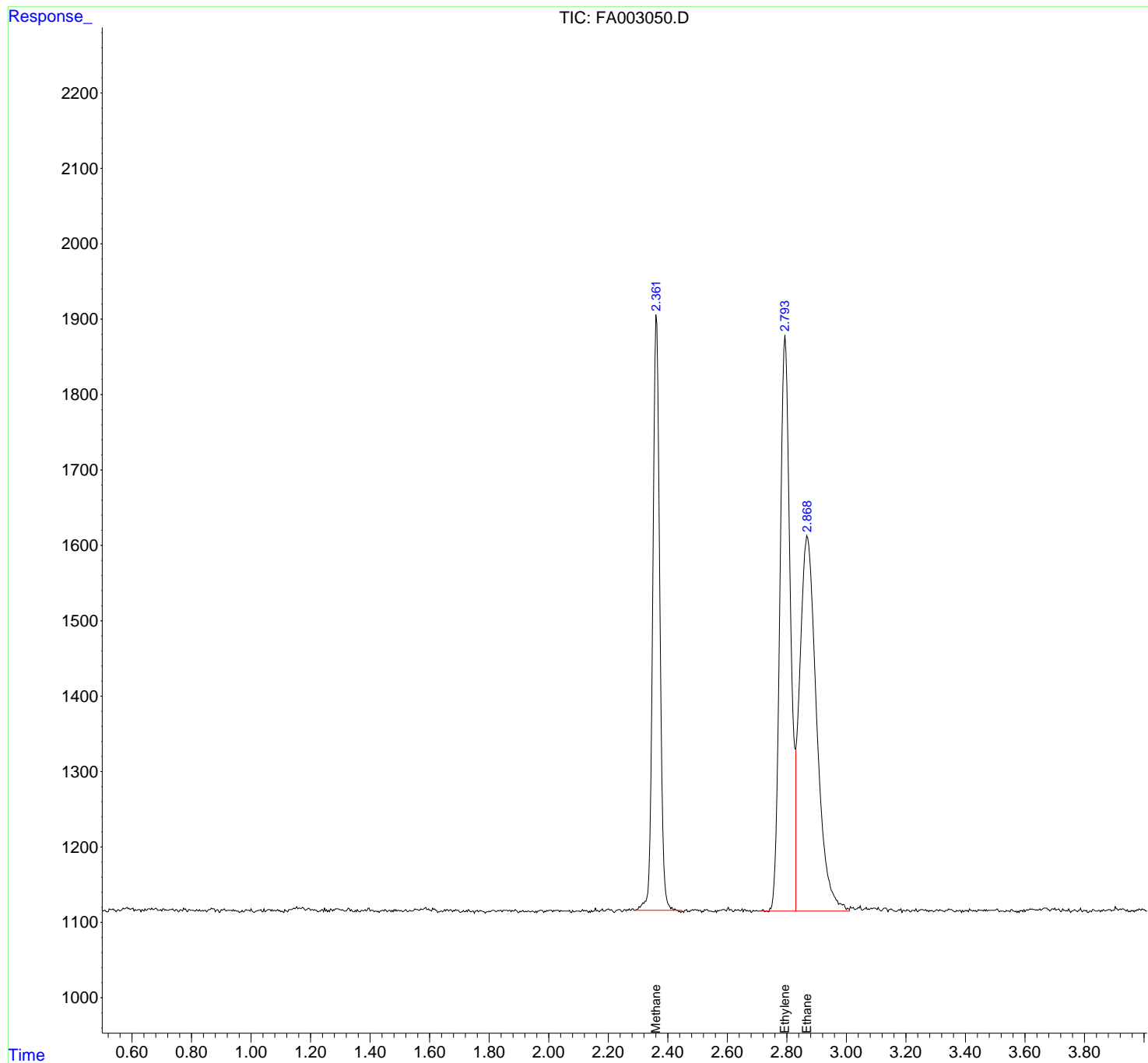
(m)=manual int.

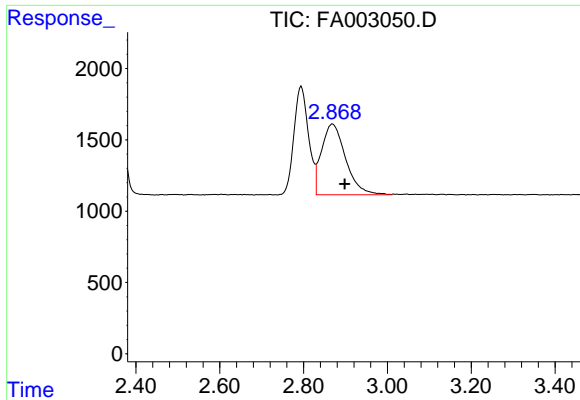
Data Path : Z:\pestpcbsrv\HPCHEM1\FID_A\Data\FA072720\
 Data File : FA003050.D
 Signal(s) : FID1A.CH
 Acq On : 27 Jul 2020 15:44
 Operator : UA/AJ
 Sample : BSA0727G2
 Misc :
 ALS Vial : 10 Sample Multiplier: 1

Instrument :
 FID_A
 ClientSampleId :

Integration File: autoint1.e
 Quant Time: Jul 31 13:03:58 2020
 Quant Method : Z:\pestpcbsrv\HPCHEM1\FID_A\Method\FA072720 GASES.M
 Quant Title :
 QLast Update : Mon Jul 27 15:00:50 2020
 Response via : Initial Calibration
 Integrator: ChemStation

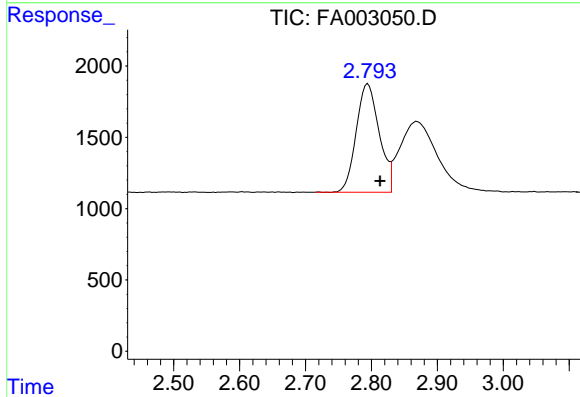
Volume Inj. :
 Signal Phase : RT-U Plot
 Signal Info : 30M x 0.32mm



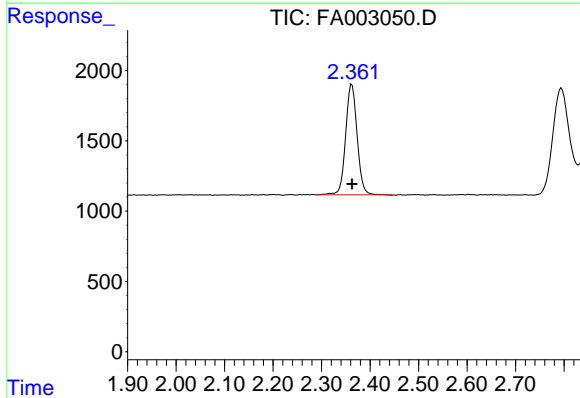


#1 Ethane
 R.T.: 2.869 min
 Delta R.T.: -0.029 min
 Response: 19849
 Conc: 195.46 ppmv

Instrument :
 FID_A
 ClientSampleId :



#2 Ethylene
 R.T.: 2.795 min
 Delta R.T.: -0.018 min
 Response: 18406
 Conc: 193.07 ppmv



#3 Methane
 R.T.: 2.363 min
 Delta R.T.: 0.000 min
 Response: 12887
 Conc: 205.95 ppmv