

Data Path : Z:\pestpcbsrv\HPCHEM1\FID_A\Data\FA080624\
 Data File : FA004217.D
 Signal(s) : FID1A.CH
 Acq On : 6 Aug 2024 9:23
 Operator : YP\AJ
 Sample : 100 PPMV GASES ICC
 Misc :
 ALS Vial : 4 Sample Multiplier: 1

Instrument :
 FID_A
ClientSampleId :
 100 PPMV GASES ICC

Integration File: autoint1.e
 Quant Time: Aug 06 09:02:01 2024
 Quant Method : Z:\pestpcbsrv\HPCHEM1\FID_A\Method\FA080624 GASES.M
 Quant Title :
 QLast Update : Tue Aug 06 08:57:43 2024
 Response via : Initial Calibration
 Integrator: ChemStation

Volume Inj. :
 Signal Phase : RT-U Plot
 Signal Info : 30M x 0.32mm

Compound	R.T.	Response	Conc Units

Target Compounds			
1) Ethane	1.709	28183	105.390 ppmv
2) Ethylene	1.645	26755	104.034 ppmv
3) Methane	1.310	15363	109.921 ppmv

(f)=RT Delta > 1/2 Window

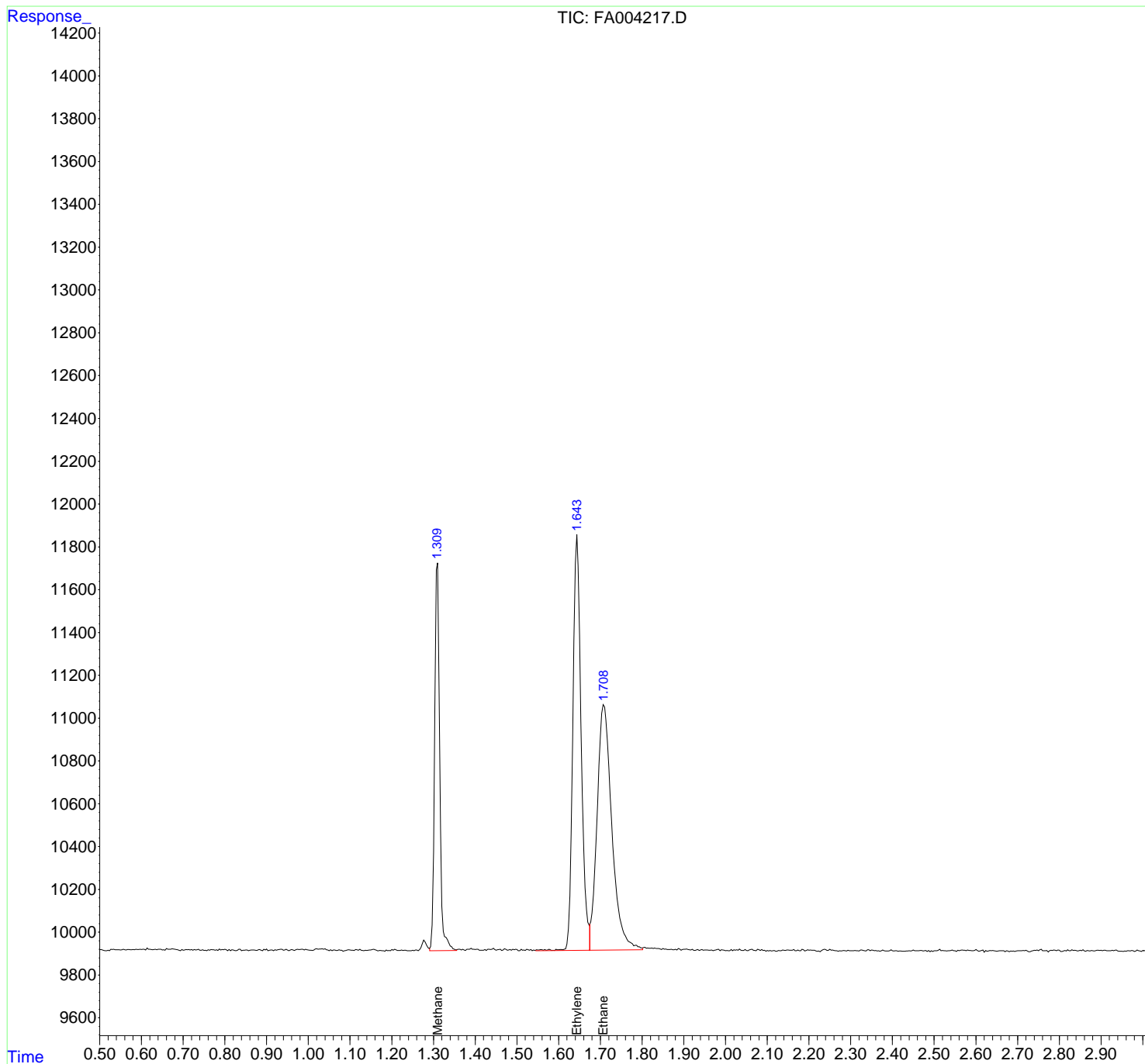
(m)=manual int.

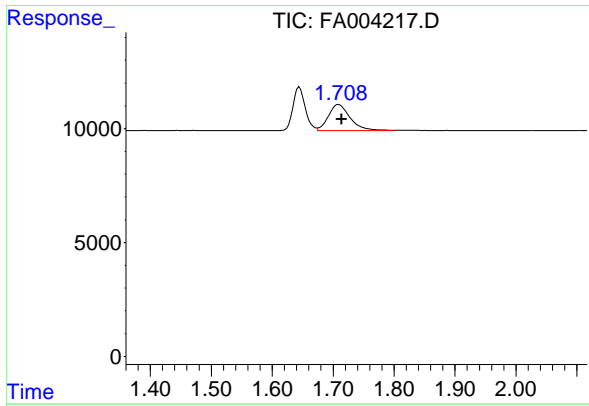
Data Path : Z:\pestpcbsrv\HPCHEM1\FID_A\Data\FA080624\
 Data File : FA004217.D
 Signal(s) : FID1A.CH
 Acq On : 6 Aug 2024 9:23
 Operator : YP\AJ
 Sample : 100 PPMV GASES ICC
 Misc :
 ALS Vial : 4 Sample Multiplier: 1

Instrument :
 FID_A
ClientSampleId :
 100 PPMV GASES ICC

Integration File: autoint1.e
 Quant Time: Aug 06 09:02:01 2024
 Quant Method : Z:\pestpcbsrv\HPCHEM1\FID_A\Method\FA080624 GASES.M
 Quant Title :
 QLast Update : Tue Aug 06 08:57:43 2024
 Response via : Initial Calibration
 Integrator: ChemStation

Volume Inj. :
 Signal Phase : RT-U Plot
 Signal Info : 30M x 0.32mm

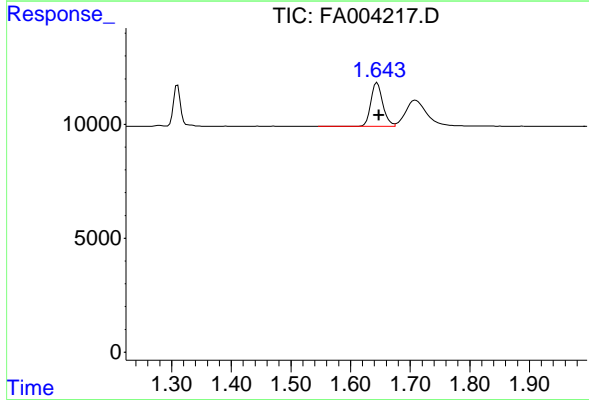




#1 Ethane

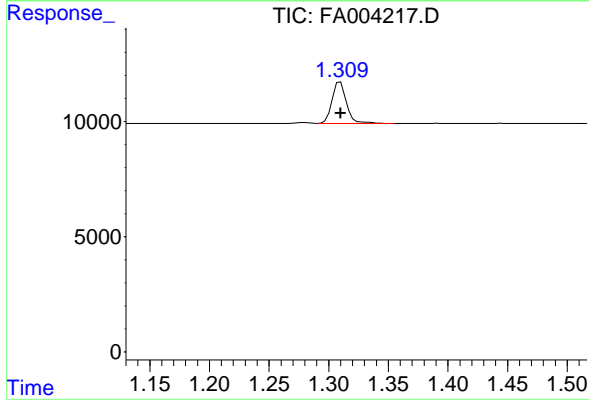
R.T.: 1.709 min
 Delta R.T.: -0.005 min
 Response: 28183
 Conc: 105.39 ppmv

Instrument : FID_A
 ClientSampleId : 100 PPMV GASES ICC



#2 Ethylene

R.T.: 1.645 min
 Delta R.T.: -0.003 min
 Response: 26755
 Conc: 104.03 ppmv



#3 Methane

R.T.: 1.310 min
 Delta R.T.: 0.000 min
 Response: 15363
 Conc: 109.92 ppmv