

Data Path : Z:\pestpcbsrv\HPCHEM1\FID\_A\Data\FA090222\  
 Data File : FA003454.D  
 Signal(s) : FID1A.CH  
 Acq On : 2 Sep 2022 11:47  
 Operator : SJ/MA  
 Sample : N4471-03  
 Misc :  
 ALS Vial : 12 Sample Multiplier: 1

Instrument :  
 FID\_A  
 ClientSampleId :

Integration File: autoint1.e  
 Quant Time: Sep 02 11:40:57 2022  
 Quant Method : Z:\pestpcbsrv\HPCHEM1\FID\_A\Method\FA090222 GASES.M  
 Quant Title :  
 QLast Update : Fri Sep 02 10:40:03 2022  
 Response via : Initial Calibration  
 Integrator: ChemStation

Volume Inj. :  
 Signal Phase : RT-U Plot  
 Signal Info : 30M x 0.32mm

Compound	R.T.	Response	Conc Units
-----			
Target Compounds			
1) Ethane	1.813	542	1.805 ppmv
2) Ethylene	1.712	2917	10.034 ppmv
3) Methane	1.325	39606	235.166 ppmv
-----			

(f)=RT Delta > 1/2 Window

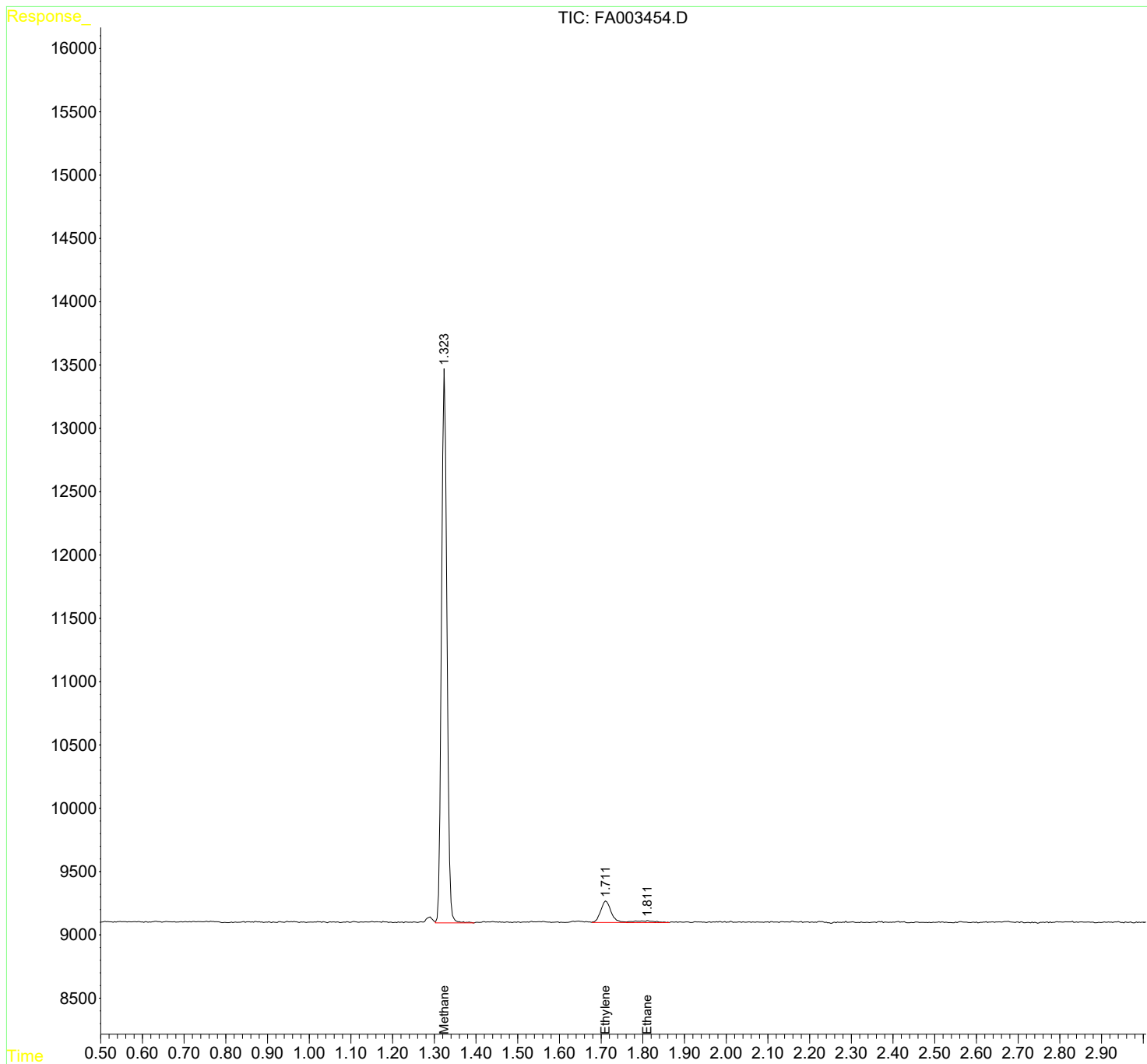
(m)=manual int.

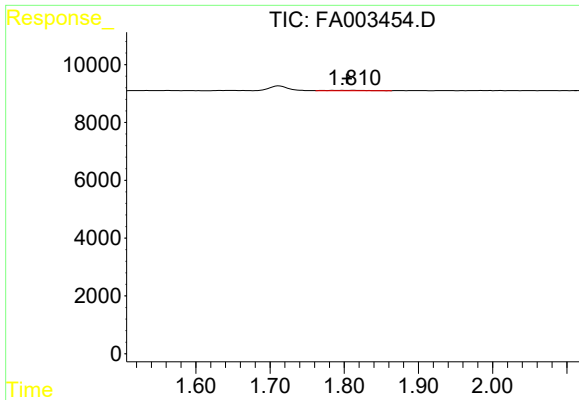
Data Path : Z:\pestpcbsrv\HPCHEM1\FID\_A\Data\FA090222\  
 Data File : FA003454.D  
 Signal(s) : FID1A.CH  
 Acq On : 2 Sep 2022 11:47  
 Operator : SJ/MA  
 Sample : N4471-03  
 Misc :  
 ALS Vial : 12 Sample Multiplier: 1

Instrument :  
 FID\_A  
 ClientSampleId :

Integration File: autoint1.e  
 Quant Time: Sep 02 11:40:57 2022  
 Quant Method : Z:\pestpcbsrv\HPCHEM1\FID\_A\Method\FA090222 GASES.M  
 Quant Title :  
 QLast Update : Fri Sep 02 10:40:03 2022  
 Response via : Initial Calibration  
 Integrator: ChemStation

Volume Inj. :  
 Signal Phase : RT-U Plot  
 Signal Info : 30M x 0.32mm

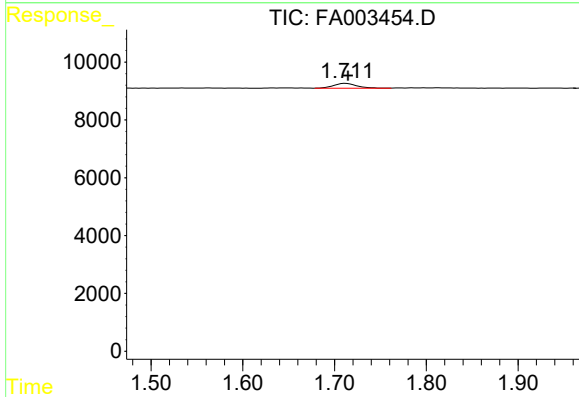




#1 Ethane

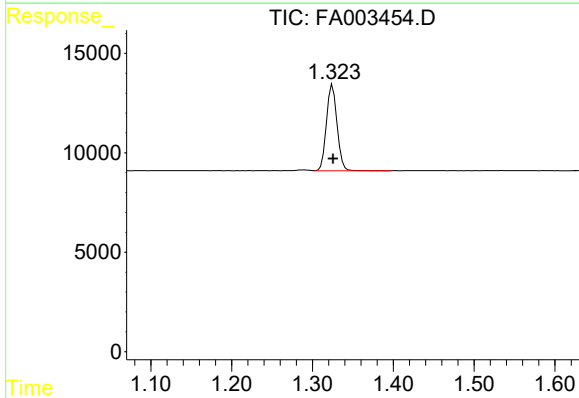
R.T.: 1.813 min  
 Delta R.T.: 0.008 min  
 Response: 542  
 Conc: 1.80 ppmv

Instrument :  
 FID\_A  
 ClientSampleId :



#2 Ethylene

R.T.: 1.712 min  
 Delta R.T.: -0.003 min  
 Response: 2917  
 Conc: 10.03 ppmv



#3 Methane

R.T.: 1.325 min  
 Delta R.T.: 0.000 min  
 Response: 39606  
 Conc: 235.17 ppmv