

Data Path : Z:\pestpcbsrv\HPCHEM1\FID_A\Data\FA090723\
Data File : FA004000.D
Signal(s) : FID1A.CH
Acq On : 7 Sep 2023 11:52
Operator : YP\AJ
Sample : 200 PPMV GASES ICC
Misc :
ALS Vial : 3 Sample Multiplier: 1

Instrument :
FID_A
ClientSampleId :
200 PPMV GASES ICC

Integration File: autoint1.e
Quant Time: Sep 07 11:38:52 2023
Quant Method : Z:\pestpcbsrv\HPCHEM1\FID_A\Method\FA090723 GASES.M
Quant Title :
QLast Update : Thu Sep 07 11:38:26 2023
Response via : Initial Calibration
Integrator: ChemStation

Volume Inj. :
Signal Phase : RT-U Plot
Signal Info : 30M x 0.32mm

Compound	R.T.	Response	Conc Units

Target Compounds			
1) Ethane	1.767	65815	200.000 ppmv
2) Ethylene	1.688	63114	200.000 ppmv
3) Methane	1.323	34269	200.000 ppmv

(f)=RT Delta > 1/2 Window

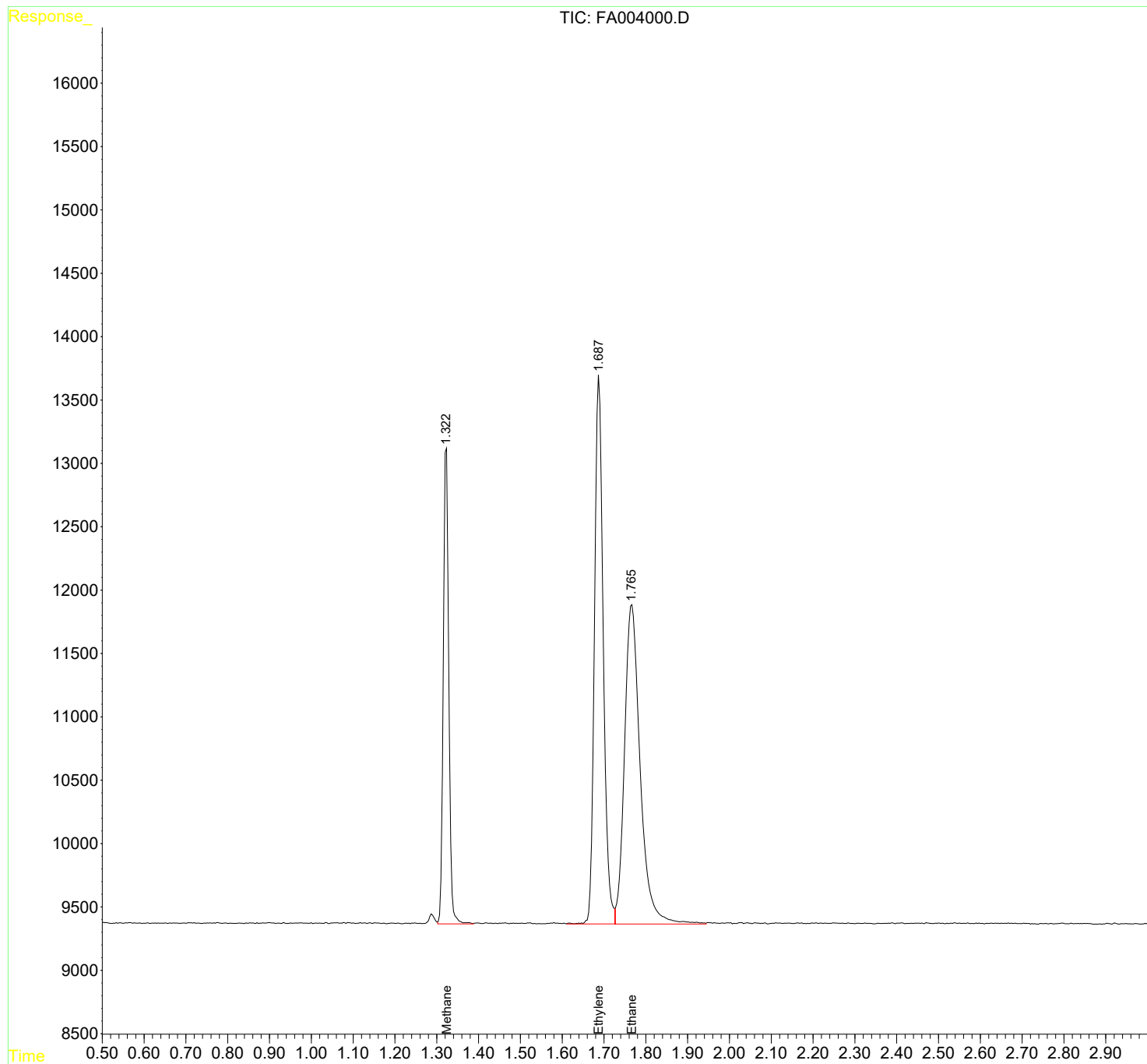
(m)=manual int.

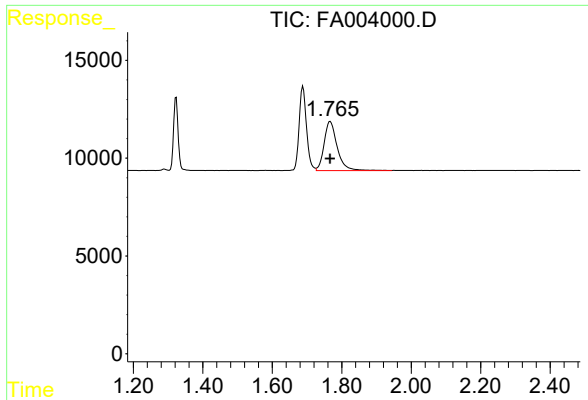
Data Path : Z:\pestpcbsrv\HPCHEM1\FID_A\Data\FA090723\
Data File : FA004000.D
Signal(s) : FID1A.CH
Acq On : 7 Sep 2023 11:52
Operator : YP\AJ
Sample : 200 PPMV GASES ICC
Misc :
ALS Vial : 3 Sample Multiplier: 1

Instrument :
FID_A
ClientSampleId :
200 PPMV GASES ICC

Integration File: autoint1.e
Quant Time: Sep 07 11:38:52 2023
Quant Method : Z:\pestpcbsrv\HPCHEM1\FID_A\Method\FA090723 GASES.M
Quant Title :
QLast Update : Thu Sep 07 11:38:26 2023
Response via : Initial Calibration
Integrator: ChemStation

Volume Inj. :
Signal Phase : RT-U Plot
Signal Info : 30M x 0.32mm

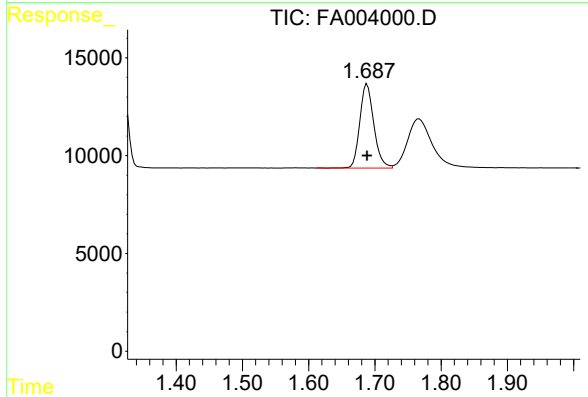




#1 Ethane

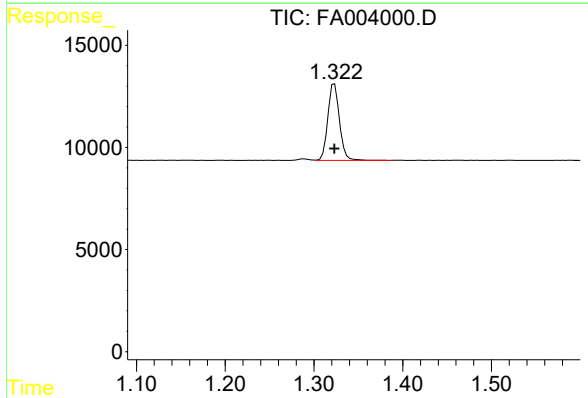
R.T.: 1.767 min
 Delta R.T.: 0.000 min
 Response: 65815
 Conc: 200.00 ppmv

Instrument :
 FID_A
 ClientSampleId :
 200 PPMV GASES ICC



#2 Ethylene

R.T.: 1.688 min
 Delta R.T.: 0.000 min
 Response: 63114
 Conc: 200.00 ppmv



#3 Methane

R.T.: 1.323 min
 Delta R.T.: 0.000 min
 Response: 34269
 Conc: 200.00 ppmv