

Data Path : Z:\pestpcbsrv\HPCHEM1\FID_A\Data\FA092021\
 Data File : FA003170.D
 Signal(s) : FID1A.CH
 Acq On : 20 Sep 2021 12:09
 Operator : SJ/MA
 Sample : 200 PPMV GASES ICC
 Misc :
 ALS Vial : 3 Sample Multiplier: 1

Instrument :
 FID_A
ClientSampleId :
 200 PPMV GASES ICC

Integration File: autoint1.e
 Quant Time: Sep 20 12:14:40 2021
 Quant Method : Z:\pestpcbsrv\HPCHEM1\FID_A\Method\FA092021 GASES.M
 Quant Title :
 QLast Update : Mon Sep 20 12:14:11 2021
 Response via : Initial Calibration
 Integrator: ChemStation

Volume Inj. :
 Signal Phase : RT-U Plot
 Signal Info : 30M x 0.32mm

Compound	R.T.	Response	Conc Units

Target Compounds			
1) Ethane	1.733	66143	200.000 ppmv
2) Ethylene	1.662	62469	200.000 ppmv
3) Methane	1.311	33925	200.000 ppmv

(f)=RT Delta > 1/2 Window

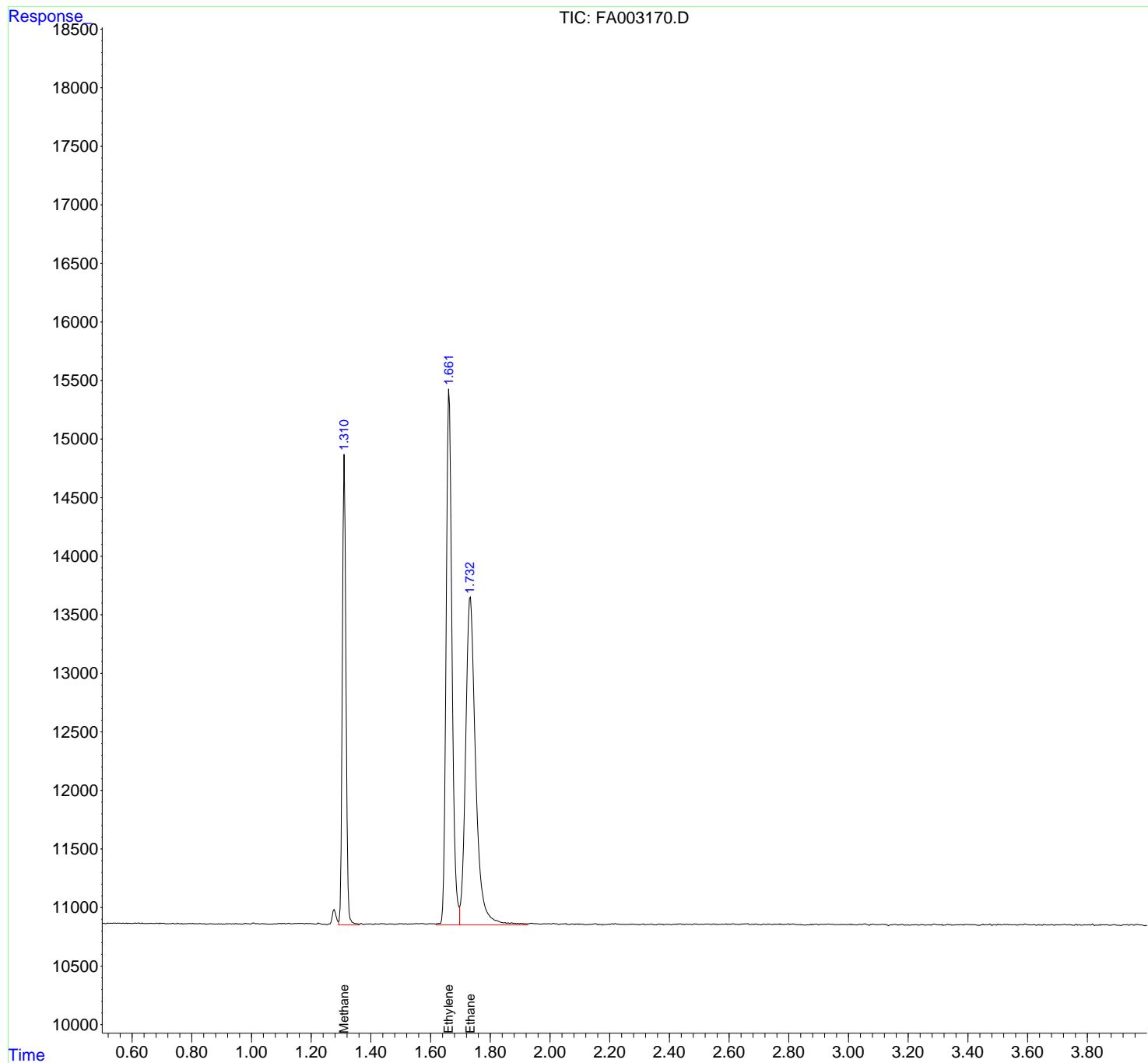
(m)=manual int.

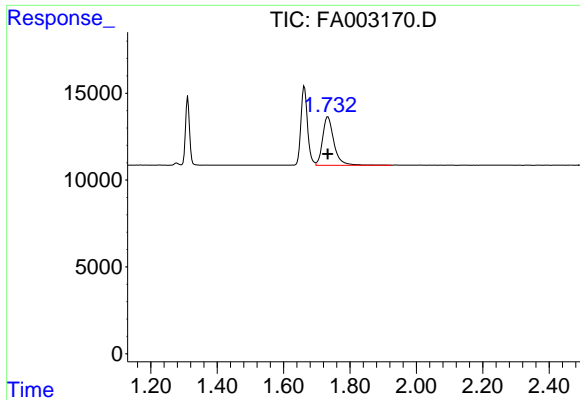
Data Path : Z:\pestpcbsrv\HPCHEM1\FID_A\Data\FA092021\
 Data File : FA003170.D
 Signal(s) : FID1A.CH
 Acq On : 20 Sep 2021 12:09
 Operator : SJ/MA
 Sample : 200 PPMV GASES ICC
 Misc :
 ALS Vial : 3 Sample Multiplier: 1

Instrument :
 FID_A
ClientSampled :
 200 PPMV GASES ICC

Integration File: autoint1.e
 Quant Time: Sep 20 12:14:40 2021
 Quant Method : Z:\pestpcbsrv\HPCHEM1\FID_A\Method\FA092021 GASES.M
 Quant Title :
 QLast Update : Mon Sep 20 12:14:11 2021
 Response via : Initial Calibration
 Integrator: ChemStation

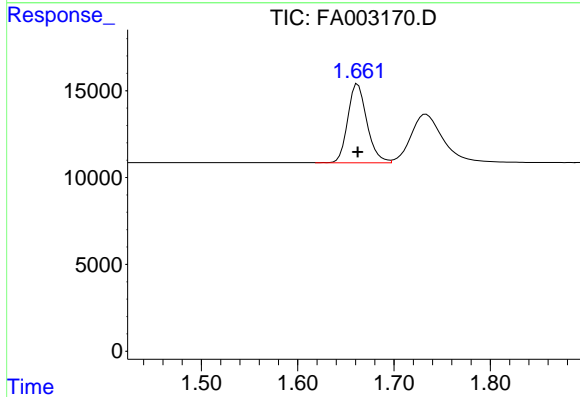
Volume Inj. :
 Signal Phase : RT-U Plot
 Signal Info : 30M x 0.32mm



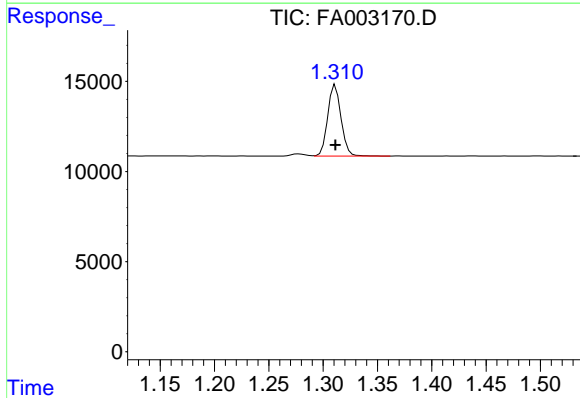


#1 Ethane
 R.T.: 1.733 min
 Delta R.T.: 0.000 min
 Response: 66143
 Conc: 200.00 ppmv

Instrument :
 FID_A
ClientSampleId :
 200 PPMV GASES ICC



#2 Ethylene
 R.T.: 1.662 min
 Delta R.T.: 0.000 min
 Response: 62469
 Conc: 200.00 ppmv



#3 Methane
 R.T.: 1.311 min
 Delta R.T.: 0.000 min
 Response: 33925
 Conc: 200.00 ppmv