

Data Path : Z:\pestpcbsrv\HPCHEM1\FID_A\Data\FA092718\
 Data File : FA002199.D
 Signal(s) : FID1A.CH
 Acq On : 27 Sep 2018 11:08
 Operator : UA/AJ
 Sample : 200 PPMV CCC
 Misc :
 ALS Vial : 18 Sample Multiplier: 1

Instrument :
 FID_A
ClientSampleId :
 200 PPMV CCC

Integration File: autoint1.e
 Quant Time: Sep 27 17:56:28 2018
 Quant Method : Z:\pestpcbsrv\HPCHEM1\FID_A\Method\FA092718 GASES.M
 Quant Title :
 QLast Update : Thu Sep 27 09:41:44 2018
 Response via : Initial Calibration
 Integrator: ChemStation

Volume Inj. :
 Signal Phase : RT-U Plot
 Signal Info : 30M x 0.32mm

Compound	R.T.	Response	Conc Units

Target Compounds			
1) Ethane	2.510	63316	217.419 ppmv
2) Ethylene	2.424	53028	201.797 ppmv
3) Methane	2.001	38097	226.805 ppmv

(f)=RT Delta > 1/2 Window

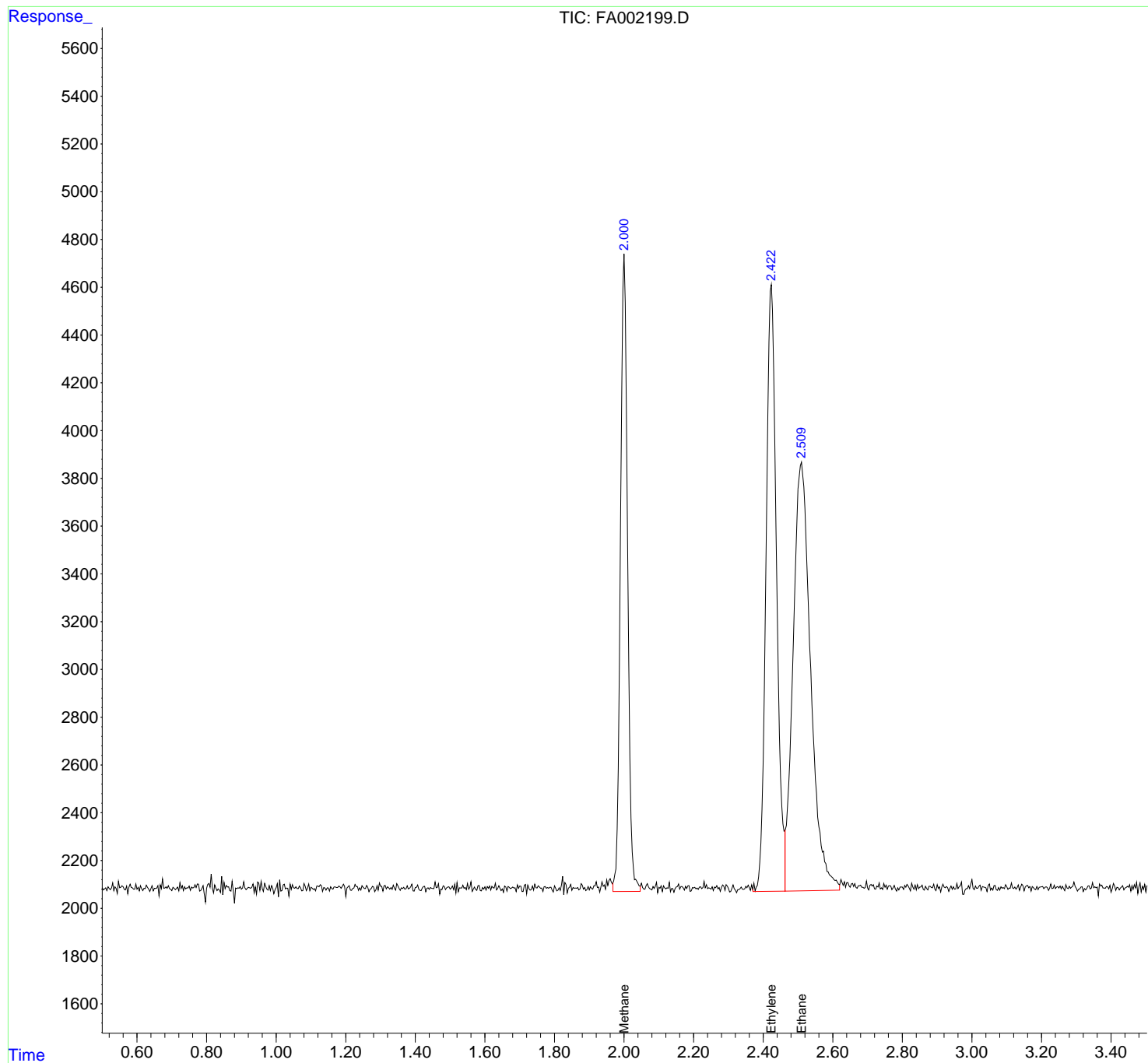
(m)=manual int.

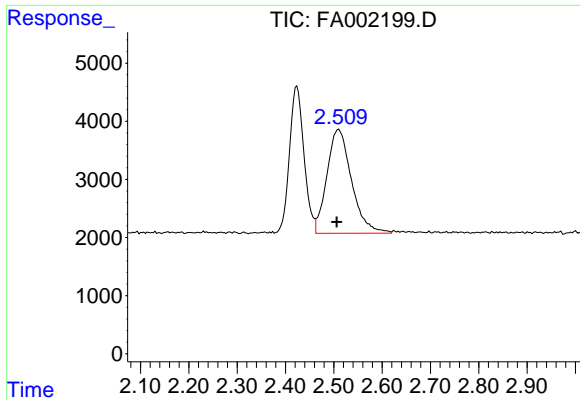
Data Path : Z:\pestpcbsrv\HPCHEM1\FID_A\Data\FA092718\
 Data File : FA002199.D
 Signal(s) : FID1A.CH
 Acq On : 27 Sep 2018 11:08
 Operator : UA/AJ
 Sample : 200 PPMV CCC
 Misc :
 ALS Vial : 18 Sample Multiplier: 1

Instrument :
 FID_A
ClientSampled :
 200 PPMV CCC

Integration File: autoint1.e
 Quant Time: Sep 27 17:56:28 2018
 Quant Method : Z:\pestpcbsrv\HPCHEM1\FID_A\Method\FA092718 GASES.M
 Quant Title :
 QLast Update : Thu Sep 27 09:41:44 2018
 Response via : Initial Calibration
 Integrator: ChemStation

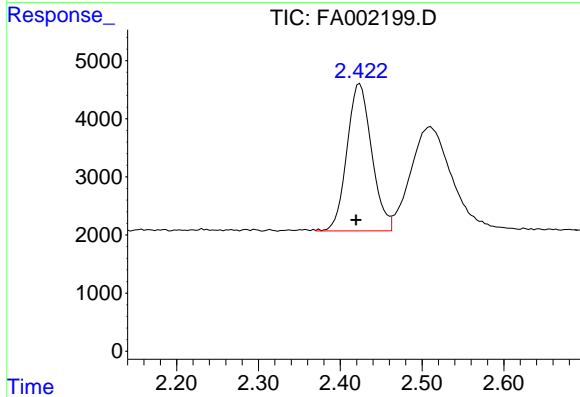
Volume Inj. :
 Signal Phase : RT-U Plot
 Signal Info : 30M x 0.32mm



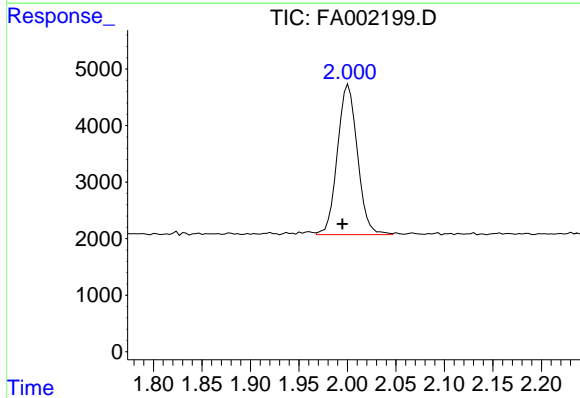


#1 Ethane
 R.T.: 2.510 min
 Delta R.T.: 0.004 min
 Response: 63316
 Conc: 217.42 ppmv

Instrument :
 FID_A
 ClientSampleId :
 200 PPMV CCC



#2 Ethylene
 R.T.: 2.424 min
 Delta R.T.: 0.005 min
 Response: 53028
 Conc: 201.80 ppmv



#3 Methane
 R.T.: 2.001 min
 Delta R.T.: 0.006 min
 Response: 38097
 Conc: 226.80 ppmv