

Data Path : Z:\pestpcbsrv\HPCHEM1\FID_A\Data\FA092718\
 Data File : FA002205.D
 Signal(s) : FID1A.CH
 Acq On : 27 Sep 2018 11:38
 Operator : UA/AJ
 Sample : J5048-15
 Misc :
 ALS Vial : 24 Sample Multiplier: 1

Instrument :
 FID_A
ClientSampleId :
 DMW-29A-SEP18

Manual Integrations
APPROVED
 mohammad
 10/2/2018 9:07:54 AM

Integration File: autoint1.e
 Quant Time: Sep 27 17:56:46 2018
 Quant Method : Z:\pestpcbsrv\HPCHEM1\FID_A\Method\FA092718 GASES.M
 Quant Title :
 QLast Update : Thu Sep 27 09:41:44 2018
 Response via : Initial Calibration
 Integrator: ChemStation

Volume Inj. :
 Signal Phase : RT-U Plot
 Signal Info : 30M x 0.32mm

Compound	R.T.	Response	Conc Units

Target Compounds			
2) Ethylene	2.413	8165	31.073 ppmv m
3) Methane	1.995	662420	3943.638 ppmv

(f)=RT Delta > 1/2 Window

(m)=manual int.

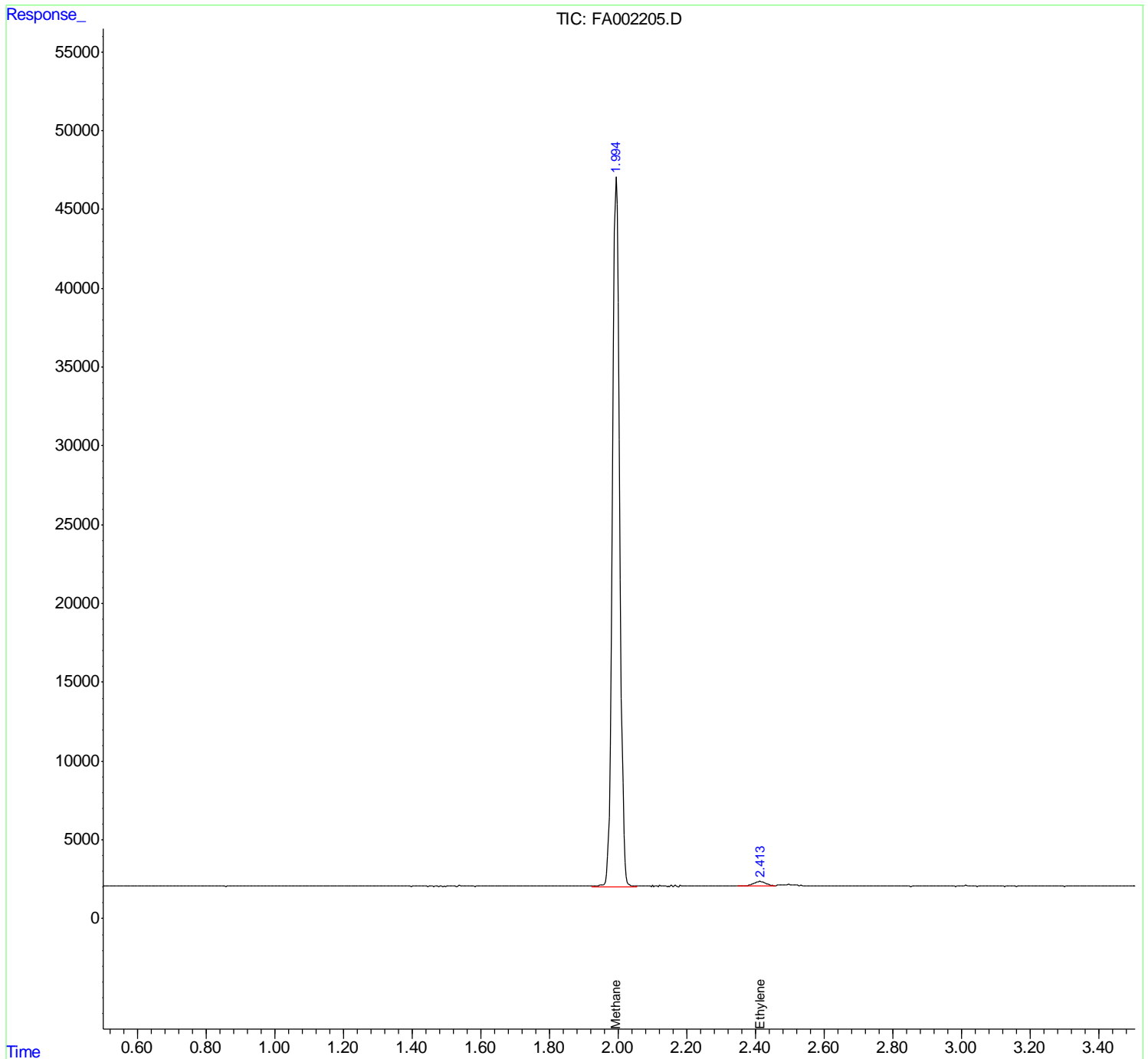
Data Path : Z:\pestpcbsrv\HPCHEM1\FID_A\Data\FA092718\
 Data File : FA002205.D
 Signal(s) : FID1A.CH
 Acq On : 27 Sep 2018 11:38
 Operator : UA/AJ
 Sample : J5048-15
 Misc :
 ALS Vial : 24 Sample Multiplier: 1

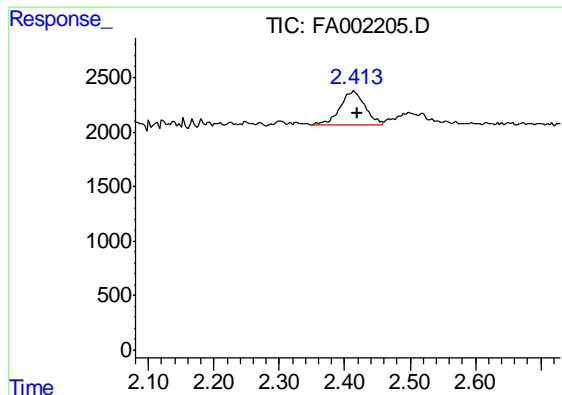
Instrument :
 FID_A
ClientSampled :
 DMW-29A-SEP18

Manual Integrations
APPROVED
 mohammad
 10/2/2018 9:07:54 AM

Integration File: autoint1.e
 Quant Time: Sep 27 17:56:46 2018
 Quant Method : Z:\pestpcbsrv\HPCHEM1\FID_A\Method\FA092718 GASES.M
 Quant Title :
 QLast Update : Thu Sep 27 09:41:44 2018
 Response via : Initial Calibration
 Integrator: ChemStation

Volume Inj. :
 Signal Phase : RT-U Plot
 Signal Info : 30M x 0.32mm





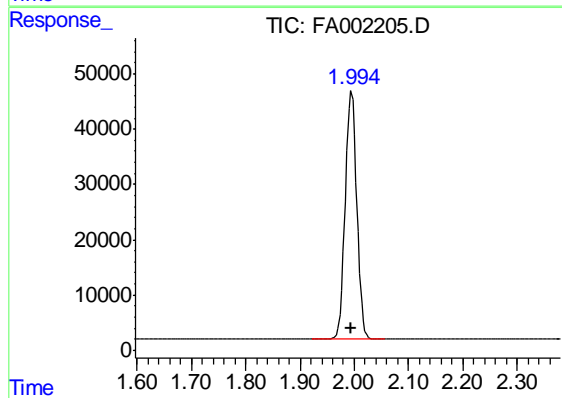
#2 Ethylene

R.T.: 2.413 min
Delta R.T.: -0.006 min
Response: 8165
Conc: 31.07 ppmv m

Instrument :
FID_A
ClientSampleId :
DMW-29A-SEP18

Manual Integrations
APPROVED

mohammad
10/2/2018 9:07:54 AM



#3 Methane

R.T.: 1.995 min
Delta R.T.: 0.000 min
Response: 662420
Conc: 3943.64 ppmv