

Data Path : Z:\pestpcbsrv\HPCHEM1\FID\_A\Data\FA092718\  
Data File : FA002219.D  
Signal(s) : FID1A.CH  
Acq On : 27 Sep 2018 14:34  
Operator : UA/AJ  
Sample : J5048-04DL 100X  
Misc :  
ALS Vial : 39 Sample Multiplier: 1

Instrument :  
FID\_A  
ClientSampleId :  
MW-36-SEP18DL

Integration File: autoint1.e  
Quant Time: Sep 27 17:57:28 2018  
Quant Method : Z:\pestpcbsrv\HPCHEM1\FID\_A\Method\FA092718 GASES.M  
Quant Title :  
QLast Update : Thu Sep 27 09:41:44 2018  
Response via : Initial Calibration  
Integrator: ChemStation

Volume Inj. :  
Signal Phase : RT-U Plot  
Signal Info : 30M x 0.32mm

Compound	R.T.	Response	Conc Units
-----			
Target Compounds			
3) Methane	2.000	46539	277.065 ppmv
-----			

(f)=RT Delta > 1/2 Window

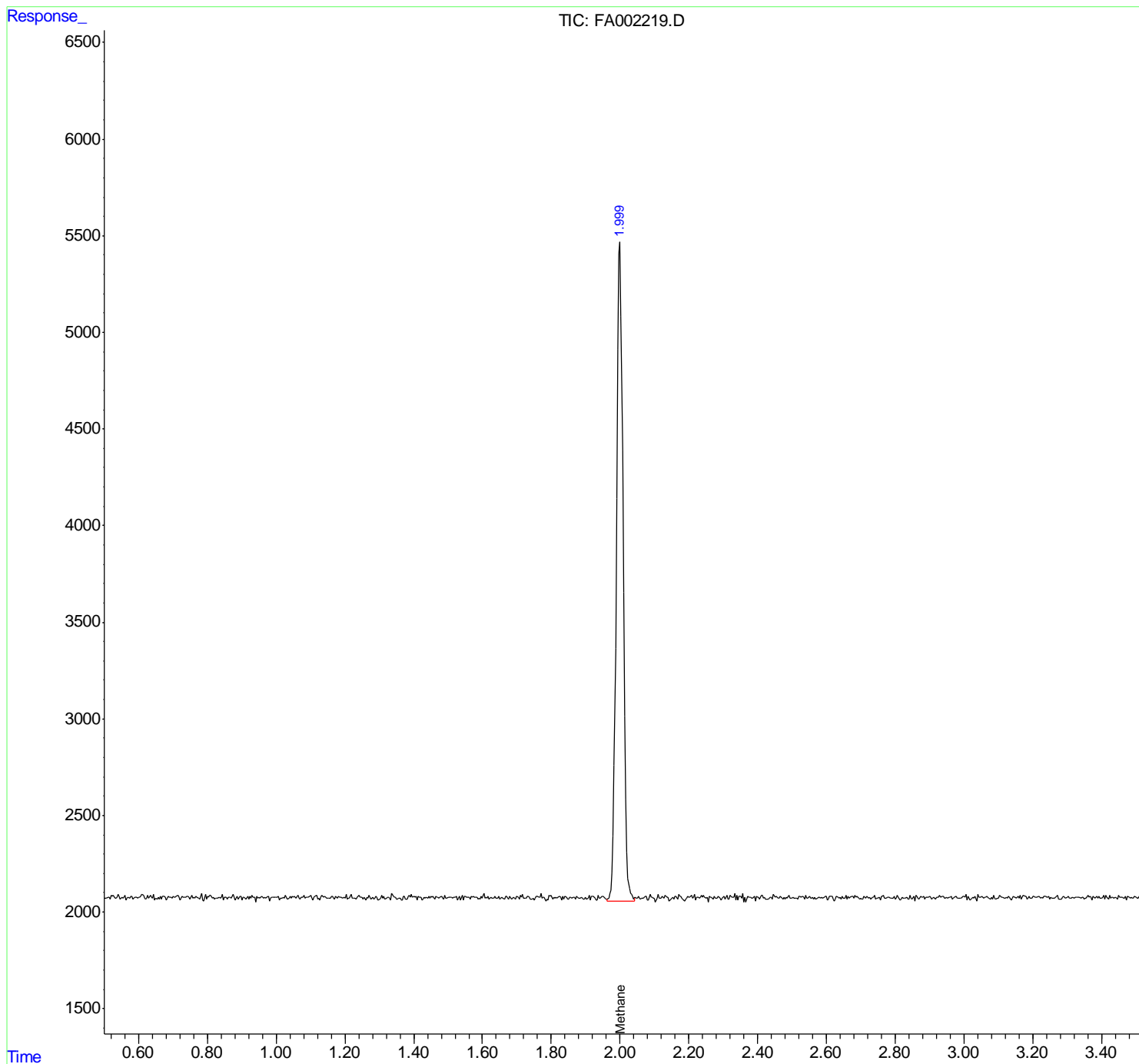
(m)=manual int.

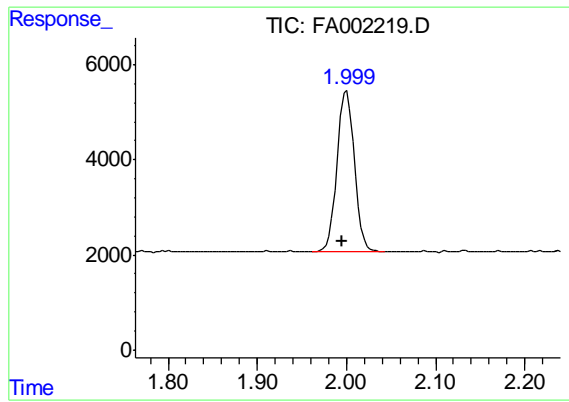
Data Path : Z:\pestpcbsrv\HPCHEM1\FID\_A\Data\FA092718\  
Data File : FA002219.D  
Signal(s) : FID1A.CH  
Acq On : 27 Sep 2018 14:34  
Operator : UA/AJ  
Sample : J5048-04DL 100X  
Misc :  
ALS Vial : 39 Sample Multiplier: 1

Instrument :  
FID\_A  
ClientSampleId :  
MW-36-SEP18DL

Integration File: autoint1.e  
Quant Time: Sep 27 17:57:28 2018  
Quant Method : Z:\pestpcbsrv\HPCHEM1\FID\_A\Method\FA092718 GASES.M  
Quant Title :  
QLast Update : Thu Sep 27 09:41:44 2018  
Response via : Initial Calibration  
Integrator: ChemStation

Volume Inj. :  
Signal Phase : RT-U Plot  
Signal Info : 30M x 0.32mm





#3 Methane  
R.T.: 2.000 min  
Delta R.T.: 0.005 min  
Response: 46539  
Conc: 277.06 ppmv

**Instrument :**  
FID\_A  
**ClientSampleId :**  
MW-36-SEP18DL