

Data Path : Z:\pestpcbsrv\HPCHEM1\FID_A\Data\FA100318\
 Data File : FA002247.D
 Signal(s) : FID1A.CH
 Acq On : 3 Oct 2018 9:29
 Operator : UA/AJ
 Sample : BSA1003G1
 Misc :
 ALS Vial : 3 Sample Multiplier: 1

Instrument :
 FID_A
 ClientSampleId :
 BSA1003G1

Integration File: autoint1.e
 Quant Time: Oct 04 09:59:46 2018
 Quant Method : Z:\pestpcbsrv\HPCHEM1\FID_A\Method\FA092718 GASES.M
 Quant Title :
 QLast Update : Thu Sep 27 09:41:44 2018
 Response via : Initial Calibration
 Integrator: ChemStation

Volume Inj. :
 Signal Phase : RT-U Plot
 Signal Info : 30M x 0.32mm

Compound	R.T.	Response	Conc Units

Target Compounds			
1) Ethane	2.491	57371	197.002 ppmv
2) Ethylene	2.407	51823	197.214 ppmv
3) Methane	1.990	32861	195.636 ppmv

(f)=RT Delta > 1/2 Window

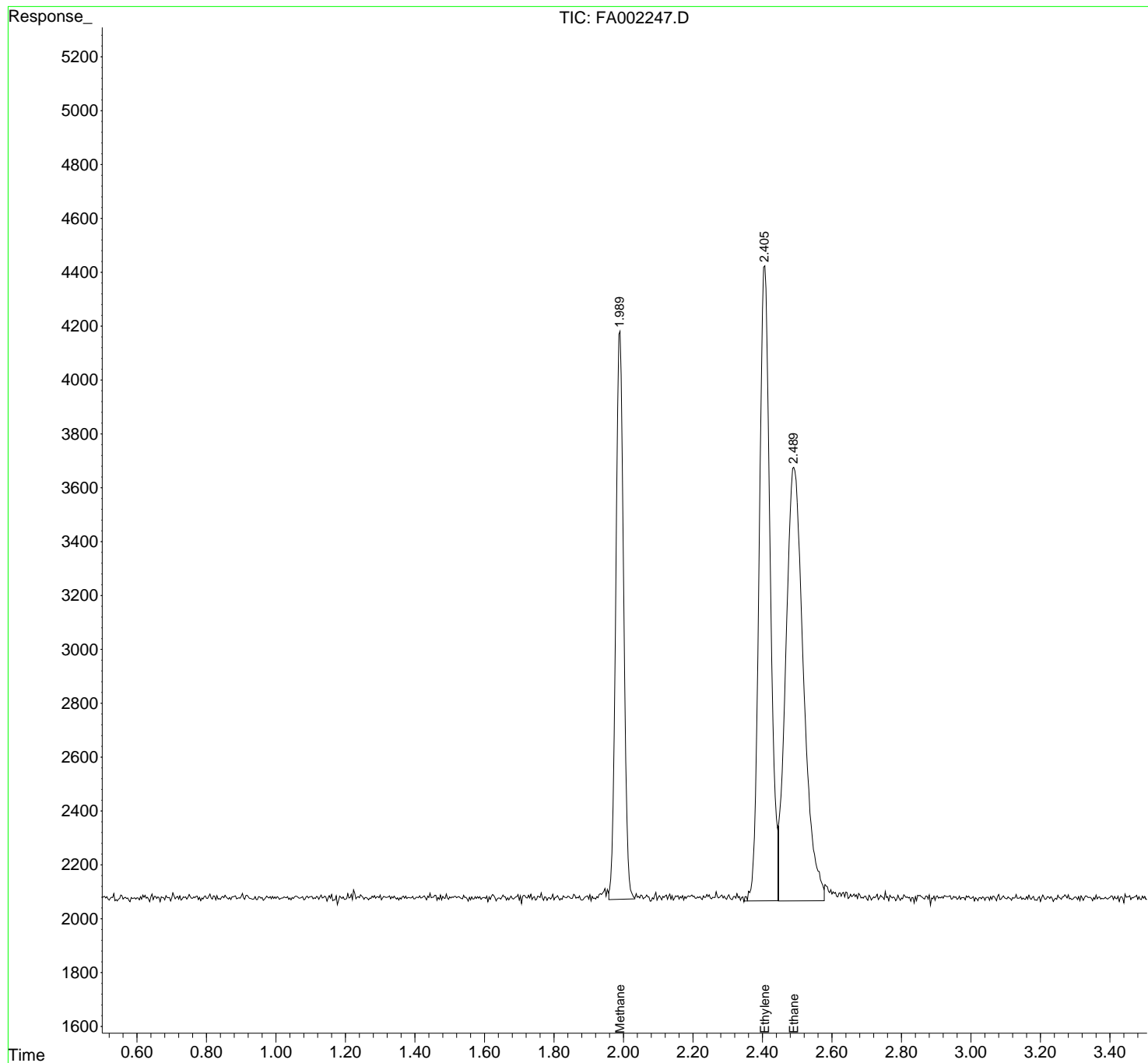
(m)=manual int.

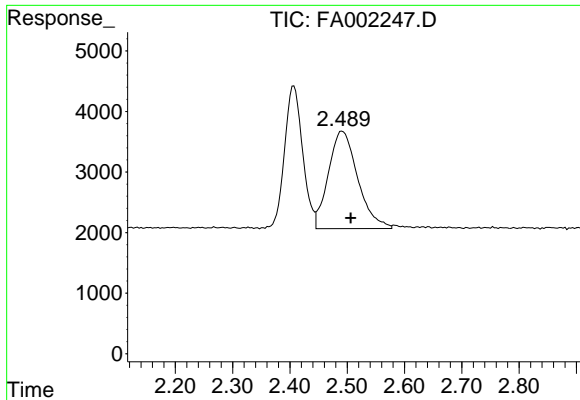
Data Path : Z:\pestpcbsrv\HPCHEM1\FID_A\Data\FA100318\
 Data File : FA002247.D
 Signal(s) : FID1A.CH
 Acq On : 3 Oct 2018 9:29
 Operator : UA/AJ
 Sample : BSA1003G1
 Misc :
 ALS Vial : 3 Sample Multiplier: 1

Instrument :
 FID_A
ClientSampleId :
 BSA1003G1

Integration File: autoint1.e
 Quant Time: Oct 04 09:59:46 2018
 Quant Method : Z:\pestpcbsrv\HPCHEM1\FID_A\Method\FA092718 GASES.M
 Quant Title :
 QLast Update : Thu Sep 27 09:41:44 2018
 Response via : Initial Calibration
 Integrator: ChemStation

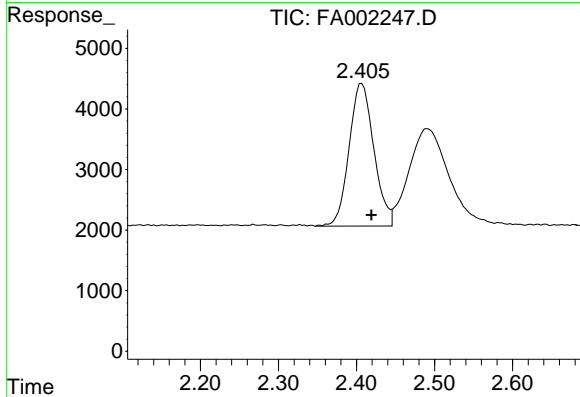
Volume Inj. :
 Signal Phase : RT-U Plot
 Signal Info : 30M x 0.32mm



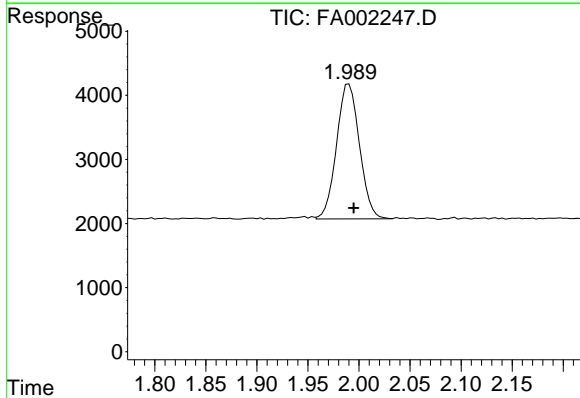


#1 Ethane
 R.T.: 2.491 min
 Delta R.T.: -0.015 min
 Response: 57371
 Conc: 197.00 ppmv

Instrument :
 FID_A
ClientSampleId :
 BSA1003G1



#2 Ethylene
 R.T.: 2.407 min
 Delta R.T.: -0.012 min
 Response: 51823
 Conc: 197.21 ppmv



#3 Methane
 R.T.: 1.990 min
 Delta R.T.: -0.005 min
 Response: 32861
 Conc: 195.64 ppmv