

Data Path : Z:\pestpcbsrv\HPCHEM1\FID\_A\Data\FA100318\  
 Data File : FA002268.D  
 Signal(s) : FID1A.CH  
 Acq On : 3 Oct 2018 12:52  
 Operator : UA/AJ  
 Sample : J5161-02DL 125X  
 Misc :  
 ALS Vial : 24 Sample Multiplier: 1

Instrument :  
 FID\_A  
 ClientSampleId :  
 FA18-JMW-3202DL

Integration File: autoint1.e  
 Quant Time: Oct 04 10:01:10 2018  
 Quant Method : Z:\pestpcbsrv\HPCHEM1\FID\_A\Method\FA092718 GASES.M  
 Quant Title :  
 QLast Update : Thu Sep 27 09:41:44 2018  
 Response via : Initial Calibration  
 Integrator: ChemStation

Volume Inj. :  
 Signal Phase : RT-U Plot  
 Signal Info : 30M x 0.32mm

Compound	R.T.	Response	Conc Units
-----			
Target Compounds			
1) Ethane	2.514	229	0.788 ppmv
2) Ethylene	2.459	285	1.085 ppmv
3) Methane	2.001	79512	473.365 ppmv
-----			

(f)=RT Delta > 1/2 Window

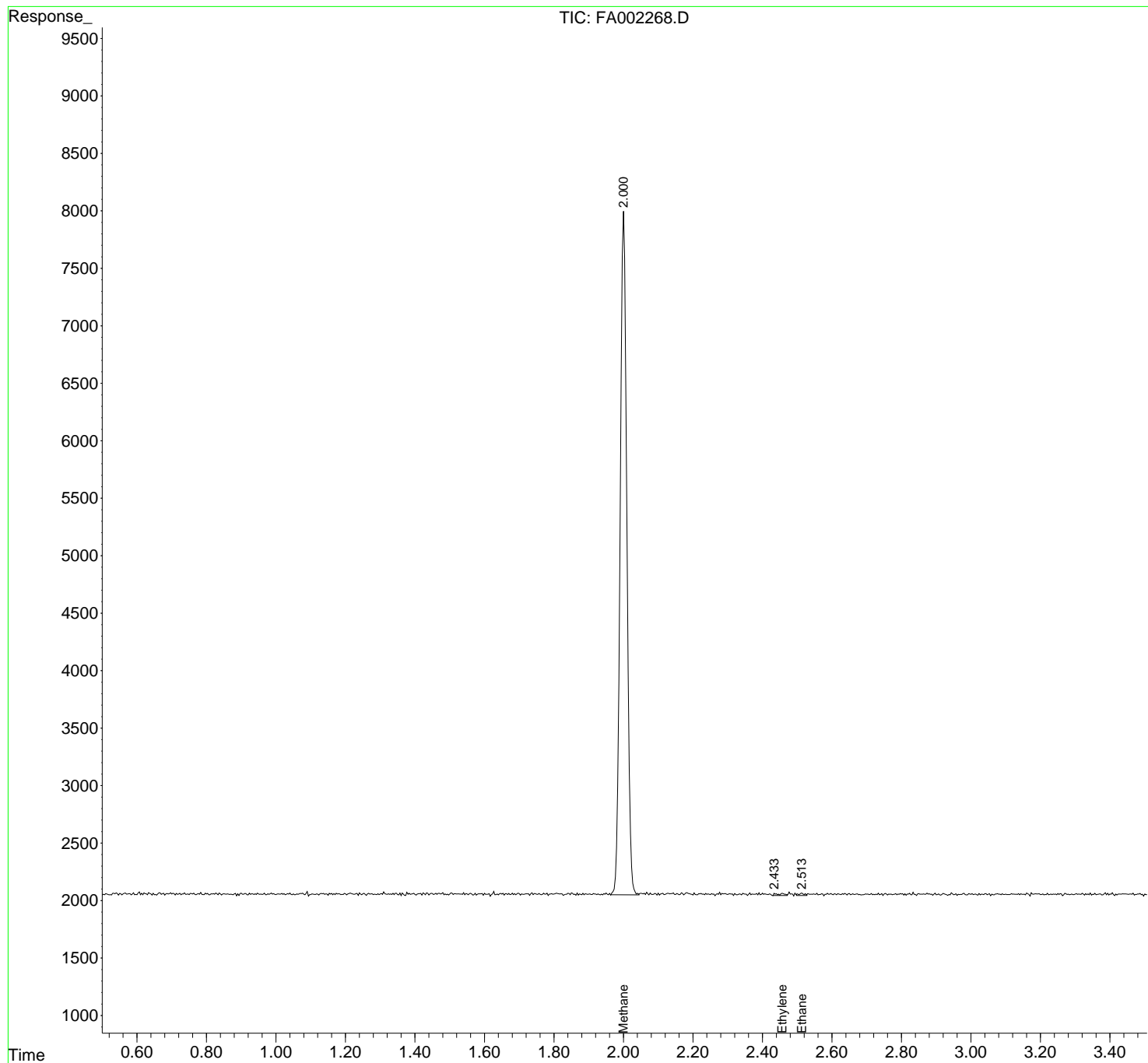
(m)=manual int.

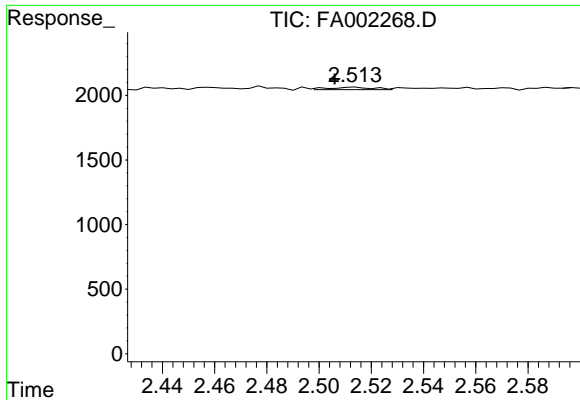
Data Path : Z:\pestpcbsrv\HPCHEM1\FID\_A\Data\FA100318\  
 Data File : FA002268.D  
 Signal(s) : FID1A.CH  
 Acq On : 3 Oct 2018 12:52  
 Operator : UA/AJ  
 Sample : J5161-02DL 125X  
 Misc :  
 ALS Vial : 24 Sample Multiplier: 1

Instrument :  
 FID\_A  
 ClientSampleId :  
 FA18-JMW-3202DL

Integration File: autoint1.e  
 Quant Time: Oct 04 10:01:10 2018  
 Quant Method : Z:\pestpcbsrv\HPCHEM1\FID\_A\Method\FA092718 GASES.M  
 Quant Title :  
 QLast Update : Thu Sep 27 09:41:44 2018  
 Response via : Initial Calibration  
 Integrator: ChemStation

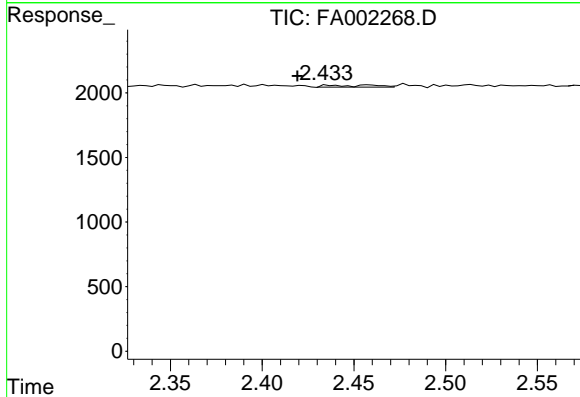
Volume Inj. :  
 Signal Phase : RT-U Plot  
 Signal Info : 30M x 0.32mm



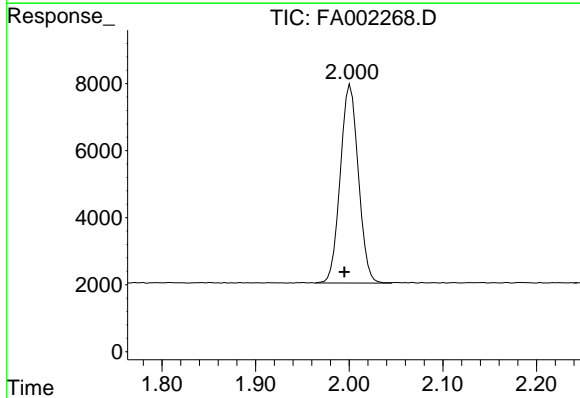


#1 Ethane  
 R.T.: 2.514 min  
 Delta R.T.: 0.008 min  
 Response: 229  
 Conc: 0.79 ppmv

**Instrument :**  
 FID\_A  
**ClientSampleId :**  
 FA18-JMW-3202DL



#2 Ethylene  
 R.T.: 2.459 min  
 Delta R.T.: 0.039 min  
 Response: 285  
 Conc: 1.09 ppmv



#3 Methane  
 R.T.: 2.001 min  
 Delta R.T.: 0.006 min  
 Response: 79512  
 Conc: 473.36 ppmv