

Data Path : Z:\pestpcbsrv\HPCHEM1\FID_A\Data\FA100721\
Data File : FA003209.D
Signal(s) : FID1A.CH
Acq On : 7 Oct 2021 10:37
Operator : SJ/MA
Sample : VBA1007G1
Misc :
ALS Vial : 2 Sample Multiplier: 1

Instrument :
FID_A
ClientSampleId :

Integration File: autoint1.e
Quant Time: Oct 07 10:46:41 2021
Quant Method : Z:\pestpcbsrv\HPCHEM1\FID_A\Method\FA100621 GASES.M
Quant Title :
QLast Update : Wed Oct 06 09:56:07 2021
Response via : Initial Calibration
Integrator: ChemStation

Volume Inj. :
Signal Phase : RT-U Plot
Signal Info : 30M x 0.32mm

Compound	R.T.	Response	Conc Units

Target Compounds			
1) Ethane	1.781	146	0.838 ppmv
2) Ethylene	1.714	25	0.137 ppmv
3) Methane	1.345	440	3.149 ppmv

(f)=RT Delta > 1/2 Window

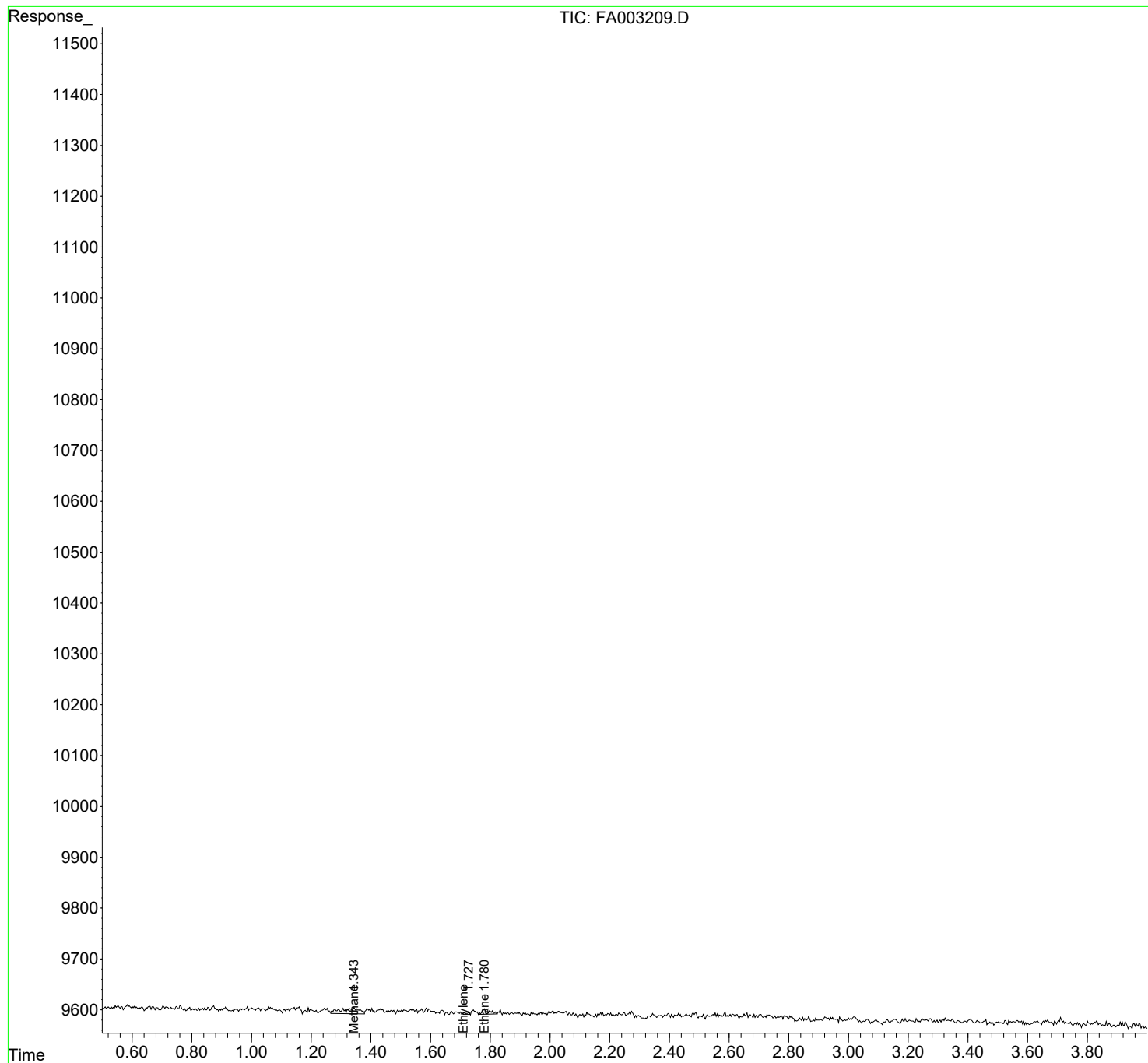
(m)=manual int.

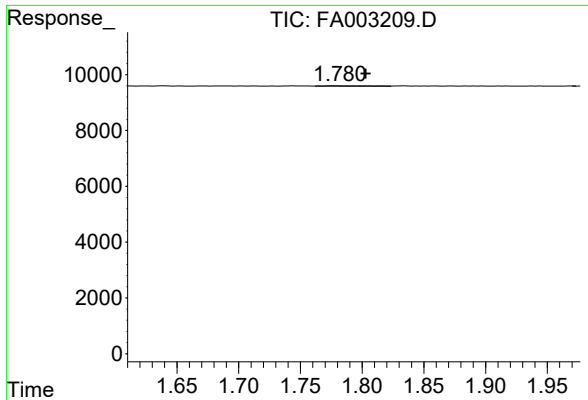
Data Path : Z:\pestpcbsrv\HPCHEM1\FID_A\Data\FA100721\
 Data File : FA003209.D
 Signal(s) : FID1A.CH
 Acq On : 7 Oct 2021 10:37
 Operator : SJ/MA
 Sample : VBA1007G1
 Misc :
 ALS Vial : 2 Sample Multiplier: 1

Instrument :
 FID_A
 ClientSampled :

Integration File: autoint1.e
 Quant Time: Oct 07 10:46:41 2021
 Quant Method : Z:\pestpcbsrv\HPCHEM1\FID_A\Method\FA100621 GASES.M
 Quant Title :
 QLast Update : Wed Oct 06 09:56:07 2021
 Response via : Initial Calibration
 Integrator: ChemStation

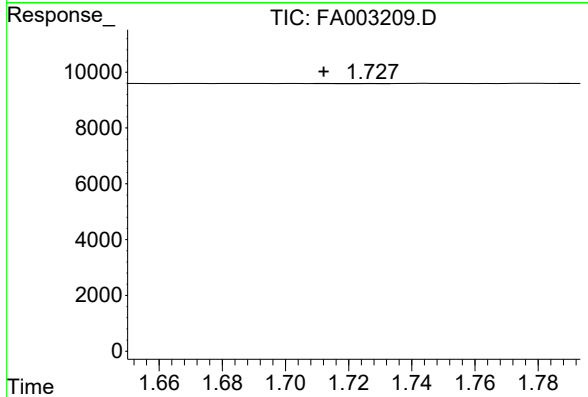
Volume Inj. :
 Signal Phase : RT-U Plot
 Signal Info : 30M x 0.32mm



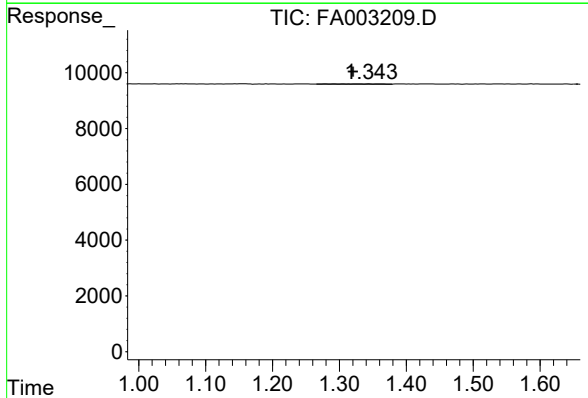


#1 Ethane
R.T.: 1.781 min
Delta R.T.: -0.022 min
Response: 146
Conc: 0.84 ppmv

Instrument :
FID_A
ClientSampleId :



#2 Ethylene
R.T.: 1.714 min
Delta R.T.: 0.002 min
Response: 25
Conc: 0.14 ppmv



#3 Methane
R.T.: 1.345 min
Delta R.T.: 0.025 min
Response: 440
Conc: 3.15 ppmv