

Data Path : Z:\pestpcbsrv\HPCHEM1\FID\_A\Data\FA101019\  
 Data File : FA002654.D  
 Signal(s) : FID1A.CH  
 Acq On : 10 Oct 2019 15:29  
 Operator : UA/AJ  
 Sample : K5122-09 5X  
 Misc :  
 ALS Vial : 27 Sample Multiplier: 1

**Instrument :**  
 FID\_A  
**ClientSampleId :**  
 FA19-CHY07DL

Integration File: autoint1.e  
 Quant Time: Oct 15 09:24:47 2019  
 Quant Method : Z:\pestpcbsrv\HPCHEM1\FID\_A\Method\FA101019 GASES.M  
 Quant Title :  
 QLast Update : Thu Oct 10 10:03:57 2019  
 Response via : Initial Calibration  
 Integrator: ChemStation

Volume Inj. :  
 Signal Phase : RT-U Plot  
 Signal Info : 30M x 0.32mm

Compound	R.T.	Response	Conc Units
Target Compounds			
3) Methane	2.422	52582	391.808 ppmv

(f)=RT Delta > 1/2 Window

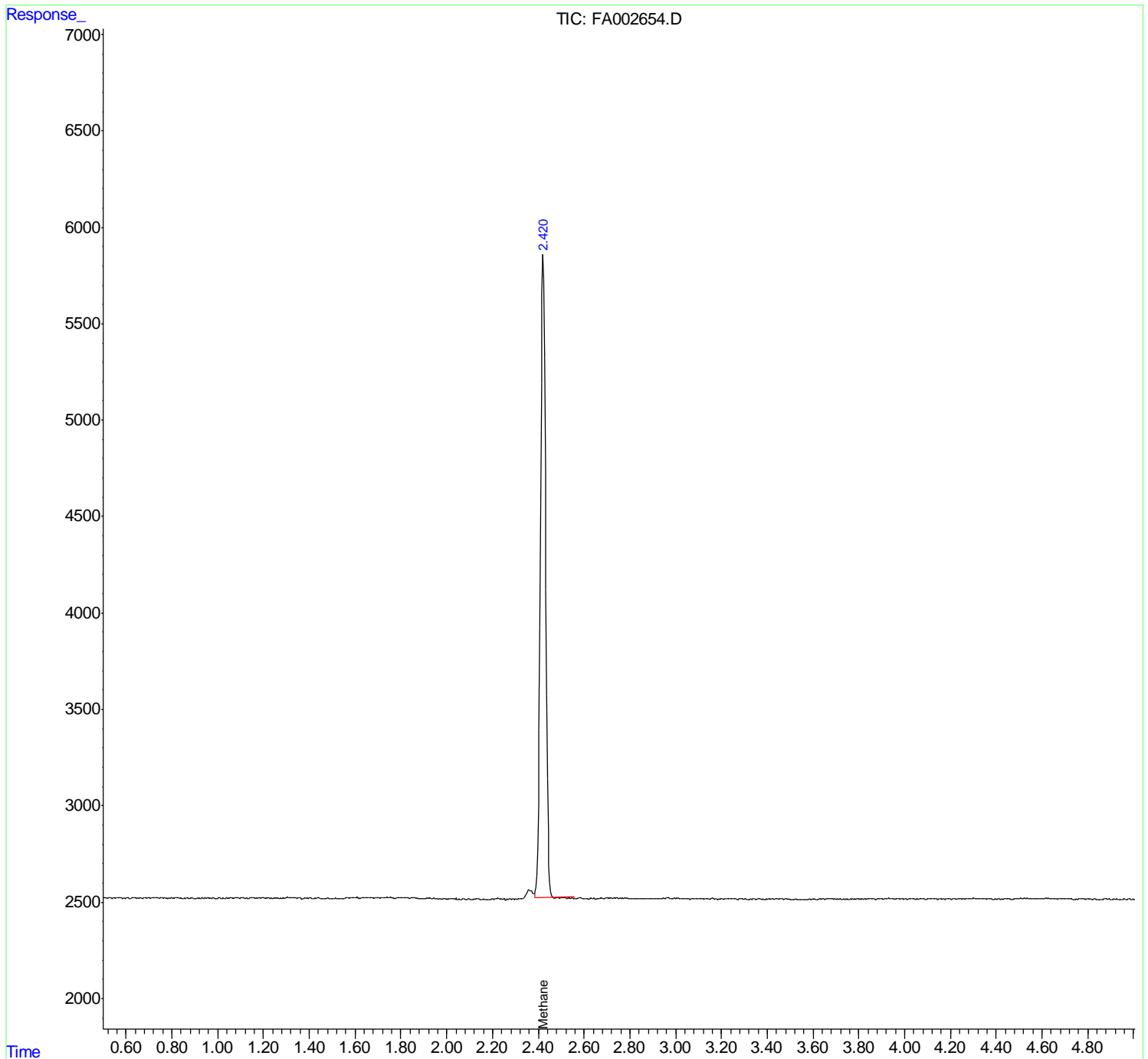
(m)=manual int.

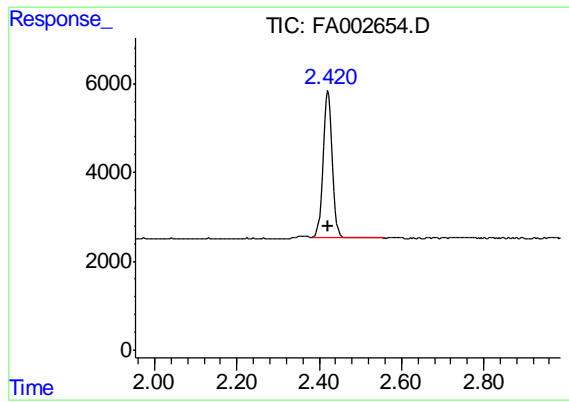
Data Path : Z:\pestpcbsrv\HPCHEM1\FID\_A\Data\FA101019\  
Data File : FA002654.D  
Signal(s) : FID1A.CH  
Acq On : 10 Oct 2019 15:29  
Operator : UA/AJ  
Sample : K5122-09 5X  
Misc :  
ALS Vial : 27 Sample Multiplier: 1

Instrument :  
FID\_A  
ClientSampleId :  
FA19-CHY07DL

Integration File: autoint1.e  
Quant Time: Oct 15 09:24:47 2019  
Quant Method : Z:\pestpcbsrv\HPCHEM1\FID\_A\Method\FA101019 GASES.M  
Quant Title :  
QLast Update : Thu Oct 10 10:03:57 2019  
Response via : Initial Calibration  
Integrator: ChemStation

Volume Inj. :  
Signal Phase : RT-U Plot  
Signal Info : 30M x 0.32mm





#3 Methane  
R.T.: 2.422 min  
Delta R.T.: 0.000 min  
Response: 52582  
Conc: 391.81 ppmv

**Instrument :**  
FID\_A  
**ClientSampleId :**  
FA19-CHY07DL