

Data Path : Z:\pestpcbsrv\HPCHEM1\FID_A\Data\FA101223\
 Data File : FA004041.D
 Signal(s) : FID1A.CH
 Acq On : 12 Oct 2023 9:22
 Operator : YP\AJ
 Sample : 04699-09
 Misc : 10 PPMV MDL
 ALS Vial : 11 Sample Multiplier: 1

Instrument :
 FID_A
 ClientSampleId :

Integration File: autoint1.e
 Quant Time: Oct 12 09:08:05 2023
 Quant Method : Z:\pestpcbsrv\HPCHEM1\FID_A\Method\FA101223 GASES.M
 Quant Title :
 QLast Update : Thu Oct 12 08:40:39 2023
 Response via : Initial Calibration
 Integrator: ChemStation

Volume Inj. :
 Signal Phase : RT-U Plot
 Signal Info : 30M x 0.32mm

Compound	R.T.	Response	Conc Units

Target Compounds			
1) Ethane	1.706	3757	8.171 ppmv
2) Ethylene	1.647	3582	8.343 ppmv
3) Methane	1.320	2276	9.326 ppmv

(f)=RT Delta > 1/2 Window

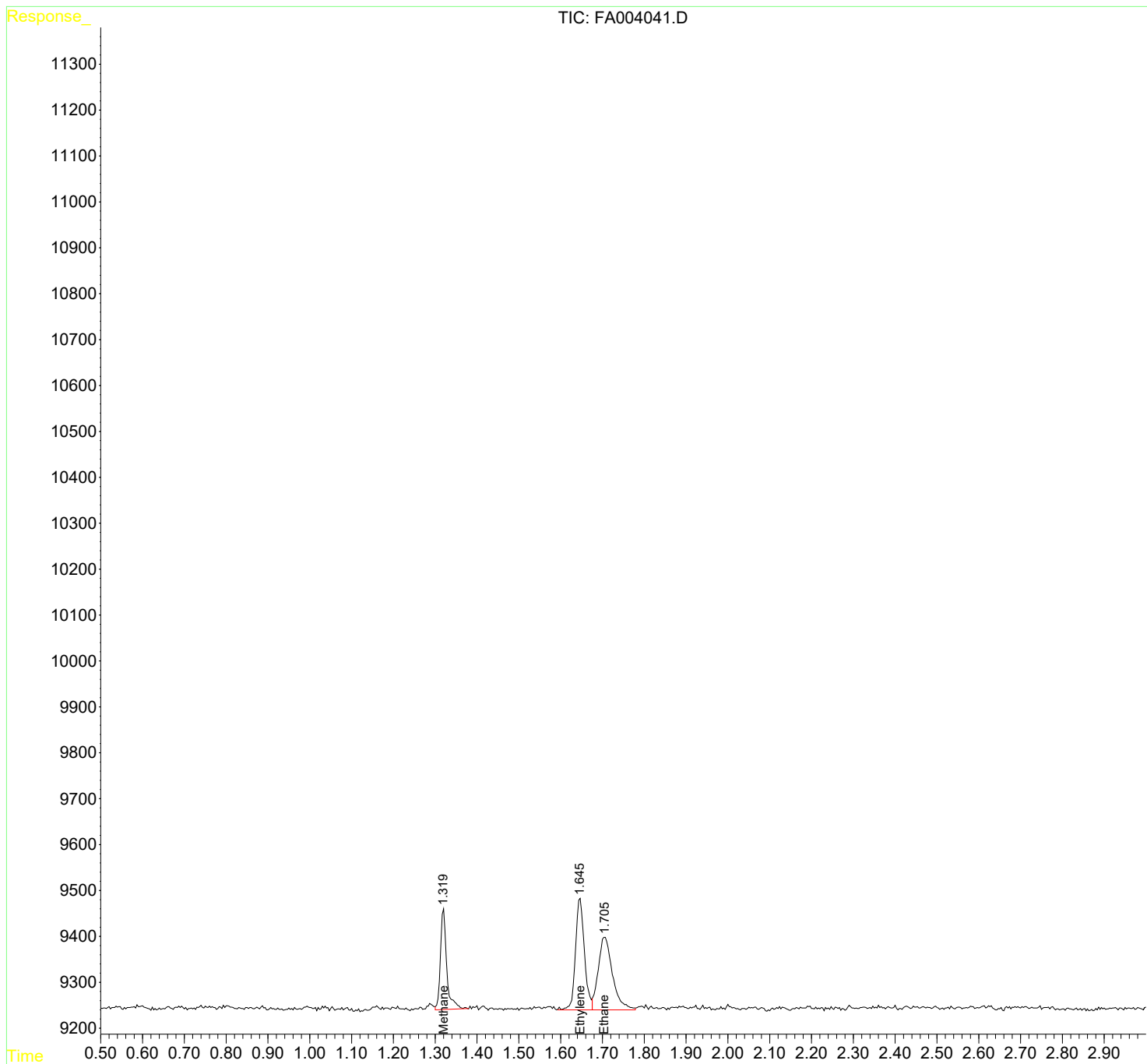
(m)=manual int.

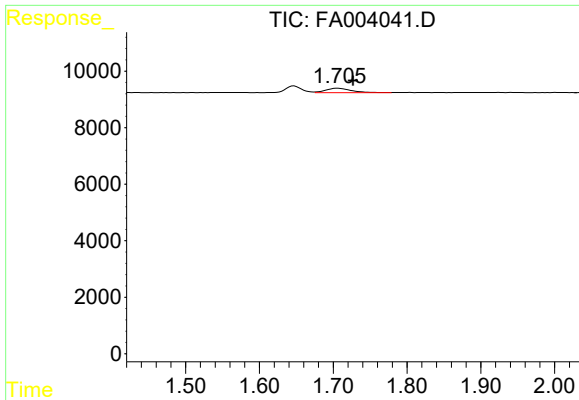
Data Path : Z:\pestpcbsrv\HPCHEM1\FID_A\Data\FA101223\
 Data File : FA004041.D
 Signal(s) : FID1A.CH
 Acq On : 12 Oct 2023 9:22
 Operator : YP\AJ
 Sample : 04699-09
 Misc : 10 PPMV MDL
 ALS Vial : 11 Sample Multiplier: 1

Instrument :
 FID_A
 ClientSampleId :

Integration File: autoint1.e
 Quant Time: Oct 12 09:08:05 2023
 Quant Method : Z:\pestpcbsrv\HPCHEM1\FID_A\Method\FA101223 GASES.M
 Quant Title :
 QLast Update : Thu Oct 12 08:40:39 2023
 Response via : Initial Calibration
 Integrator: ChemStation

Volume Inj. :
 Signal Phase : RT-U Plot
 Signal Info : 30M x 0.32mm

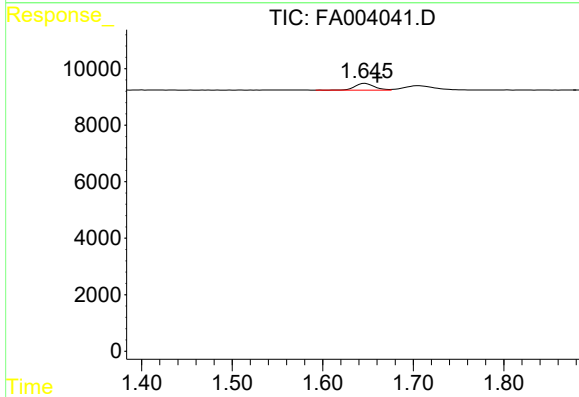




#1 Ethane

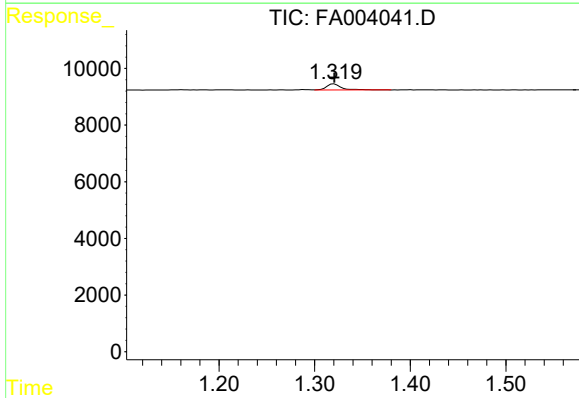
R.T.: 1.706 min
 Delta R.T.: -0.021 min
 Response: 3757
 Conc: 8.17 ppmv

Instrument : FID_A
 ClientSampleId :



#2 Ethylene

R.T.: 1.647 min
 Delta R.T.: -0.014 min
 Response: 3582
 Conc: 8.34 ppmv



#3 Methane

R.T.: 1.320 min
 Delta R.T.: 0.000 min
 Response: 2276
 Conc: 9.33 ppmv