

Data Path : Z:\pestpcbsrv\HPCHEM1\FID\_A\Data\FA101819\  
 Data File : FA002729.D  
 Signal(s) : FID1A.CH  
 Acq On : 18 Oct 2019 11:04  
 Operator : DD/AJ  
 Sample : K5338-04  
 Misc :  
 ALS Vial : 7 Sample Multiplier: 1

Instrument :  
 FID\_A  
 ClientSampleId :

Integration File: autoint1.e  
 Quant Time: Oct 22 13:39:39 2019  
 Quant Method : Z:\pestpcbsrv\HPCHEM1\FID\_A\Method\FA101019 GASES.M  
 Quant Title :  
 QLast Update : Thu Oct 10 10:03:57 2019  
 Response via : Initial Calibration  
 Integrator: ChemStation

Volume Inj. :  
 Signal Phase : RT-U Plot  
 Signal Info : 30M x 0.32mm

Compound	R.T.	Response	Conc Units
-----			
Target Compounds			
1) Ethane	3.230	0	0.002 ppmv
3) Methane	2.418	913431	6806.307 ppmv
-----			

(f)=RT Delta > 1/2 Window

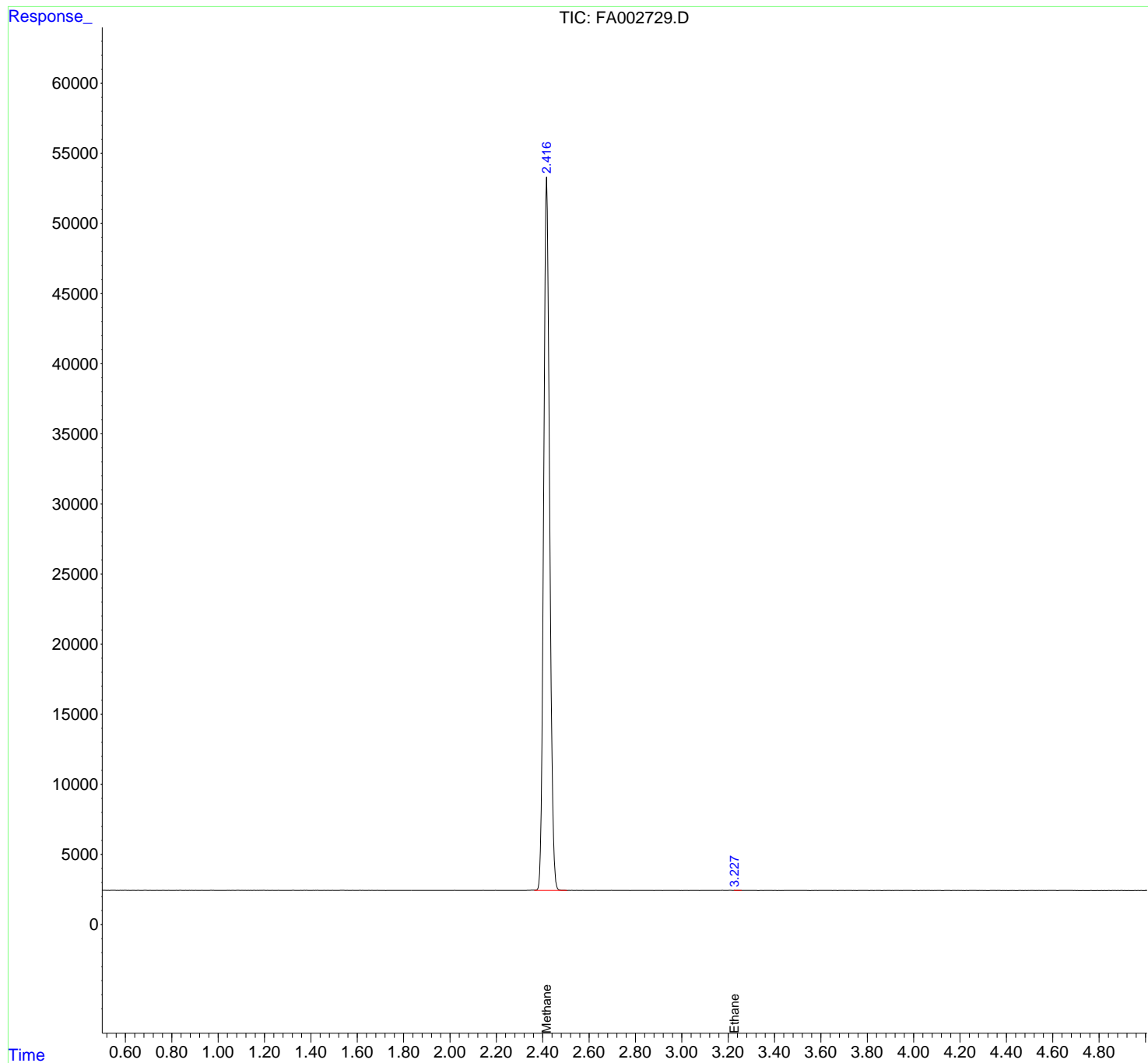
(m)=manual int.

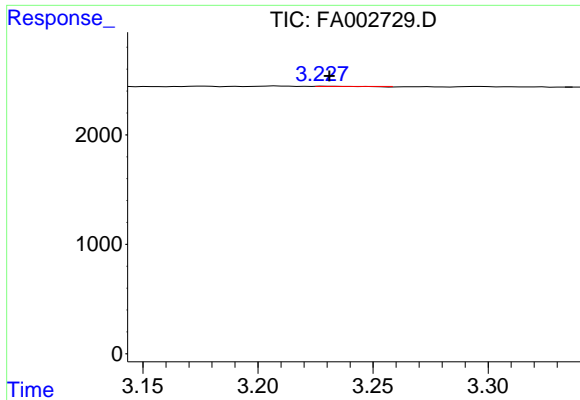
Data Path : Z:\pestpcbsrv\HPCHEM1\FID\_A\Data\FA101819\  
 Data File : FA002729.D  
 Signal(s) : FID1A.CH  
 Acq On : 18 Oct 2019 11:04  
 Operator : DD/AJ  
 Sample : K5338-04  
 Misc :  
 ALS Vial : 7 Sample Multiplier: 1

Instrument :  
 FID\_A  
 ClientSampled :

Integration File: autoint1.e  
 Quant Time: Oct 22 13:39:39 2019  
 Quant Method : Z:\pestpcbsrv\HPCHEM1\FID\_A\Method\FA101019 GASES.M  
 Quant Title :  
 QLast Update : Thu Oct 10 10:03:57 2019  
 Response via : Initial Calibration  
 Integrator: ChemStation

Volume Inj. :  
 Signal Phase : RT-U Plot  
 Signal Info : 30M x 0.32mm





#1 Ethane

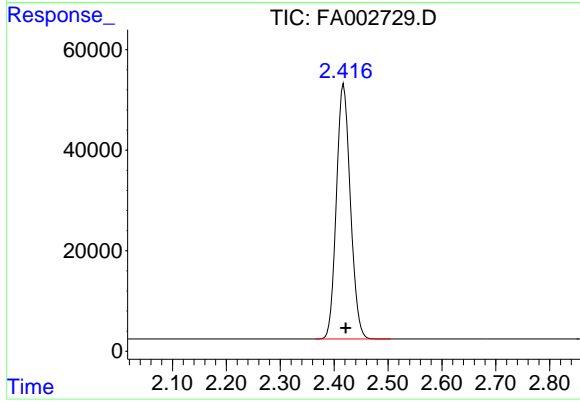
R.T.: 3.230 min

Delta R.T.: -0.001 min

Response: 0

Conc: 0.00 ppmv

Instrument :  
 FID\_A  
 ClientSampleId :



#3 Methane

R.T.: 2.418 min

Delta R.T.: -0.004 min

Response: 913431

Conc: 6806.31 ppmv