

Data Path : Z:\pestpcbsrv\HPCHEM1\FID_A\Data\FA101922\
Data File : FA003543.D
Signal(s) : FID1A.CH
Acq On : 19 Oct 2022 12:36
Operator : SJ/MA
Sample : N5185-01DL 2X
Misc :
ALS Vial : 8 Sample Multiplier: 1

Instrument :
FID_A
ClientSampleId :
MW-01DL

Integration File: autoint1.e
Quant Time: Oct 19 12:30:02 2022
Quant Method : Z:\pestpcbsrv\HPCHEM1\FID_A\Method\FA101722 GASES.M
Quant Title :
QLast Update : Mon Oct 17 09:51:22 2022
Response via : Initial Calibration
Integrator: ChemStation

Volume Inj. :
Signal Phase : RT-U Plot
Signal Info : 30M x 0.32mm

Compound	R.T.	Response	Conc Units

Target Compounds			
1) Ethane	1.652	577	2.580 ppmv
2) Ethylene	1.652	577	2.628 ppmv
3) Methane	1.319	60901	386.062 ppmv

(f)=RT Delta > 1/2 Window

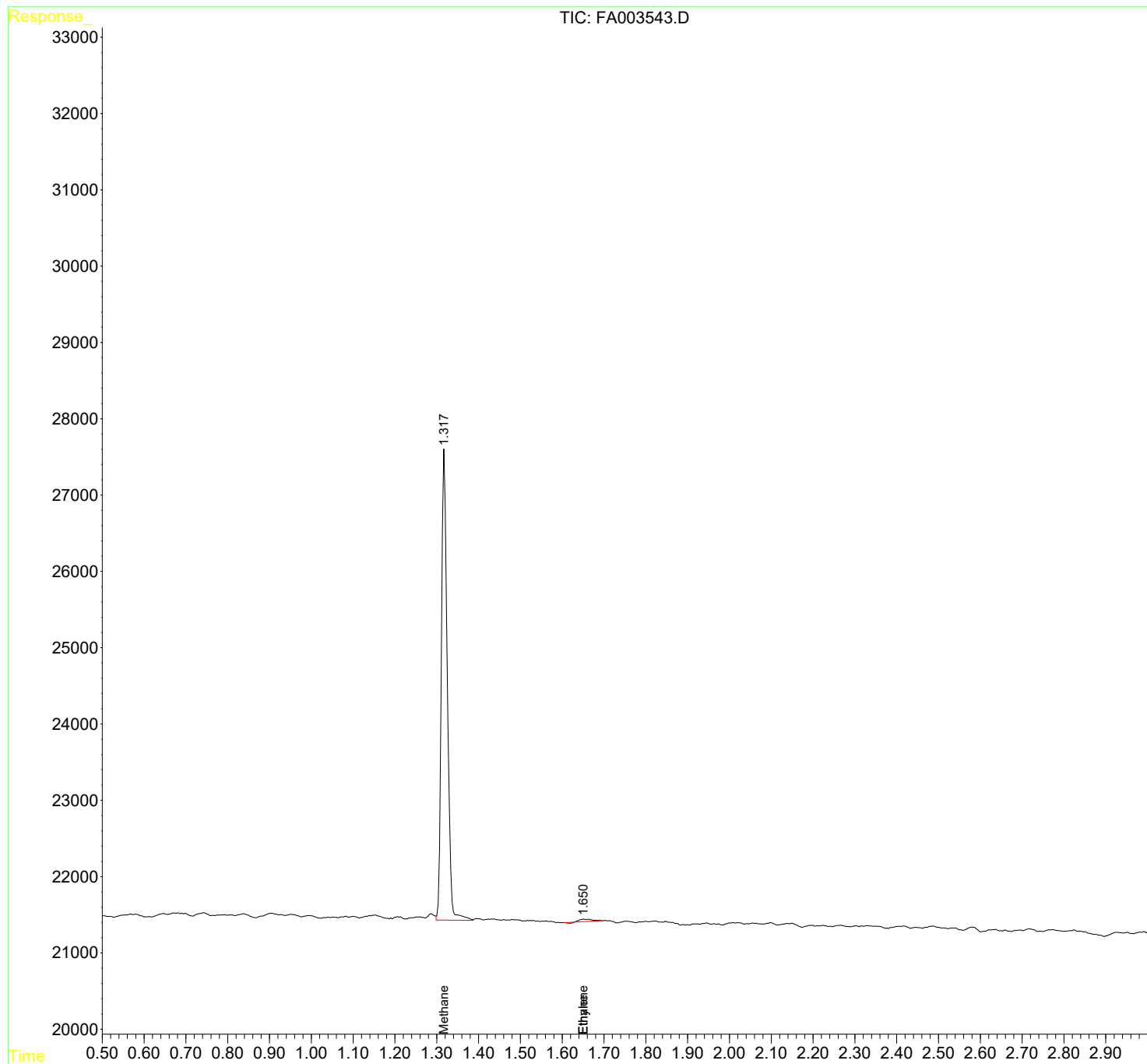
(m)=manual int.

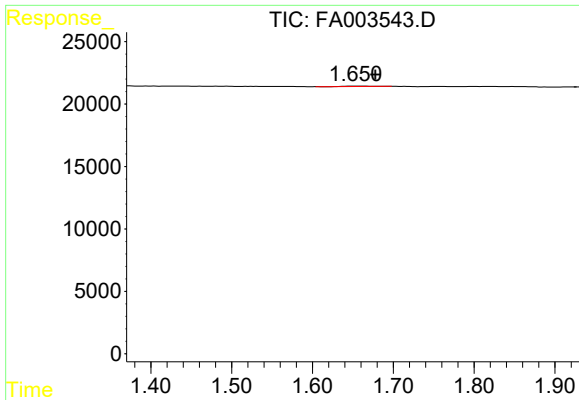
Data Path : Z:\pestpcbsrv\HPCHEM1\FID_A\Data\FA101922\
Data File : FA003543.D
Signal(s) : FID1A.CH
Acq On : 19 Oct 2022 12:36
Operator : SJ/MA
Sample : N5185-01DL 2X
Misc :
ALS Vial : 8 Sample Multiplier: 1

Instrument :
FID_A
ClientSampleId :
MW-01DL

Integration File: autoint1.e
Quant Time: Oct 19 12:30:02 2022
Quant Method : Z:\pestpcbsrv\HPCHEM1\FID_A\Method\FA101722 GASES.M
Quant Title :
QLast Update : Mon Oct 17 09:51:22 2022
Response via : Initial Calibration
Integrator: ChemStation

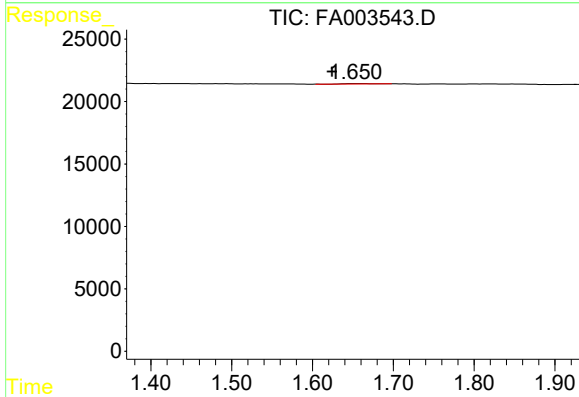
Volume Inj. :
Signal Phase : RT-U Plot
Signal Info : 30M x 0.32mm



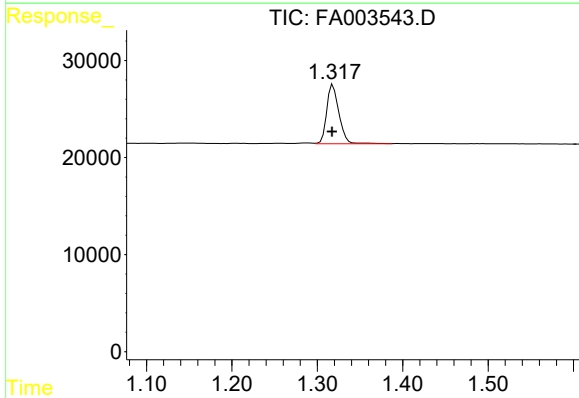


#1 Ethane
 R.T.: 1.652 min
 Delta R.T.: -0.026 min
 Response: 577
 Conc: 2.58 ppmv

Instrument :
 FID_A
 ClientSampleId :
 MW-01DL



#2 Ethylene
 R.T.: 1.652 min
 Delta R.T.: 0.028 min
 Response: 577
 Conc: 2.63 ppmv



#3 Methane
 R.T.: 1.319 min
 Delta R.T.: 0.001 min
 Response: 60901
 Conc: 386.06 ppmv