

Data Path : Z:\pestpcbsrv\HPCHEM1\FID_A\Data\FA102921\
Data File : FA003227.D
Signal(s) : FID1A.CH
Acq On : 29 Oct 2021 10:05
Operator : SJ/MA
Sample : M4361-04
Misc :
ALS Vial : 14 Sample Multiplier: 1

Instrument :
FID_A
ClientSampleId :

Integration File: autoint1.e
Quant Time: Oct 29 10:10:08 2021
Quant Method : Z:\pestpcbsrv\HPCHEM1\FID_A\Method\FA102921 GASES.M
Quant Title :
QLast Update : Fri Oct 29 09:09:00 2021
Response via : Initial Calibration
Integrator: ChemStation

Volume Inj. :
Signal Phase : RT-U Plot
Signal Info : 30M x 0.32mm

Compound	R.T.	Response	Conc Units

Target Compounds			
1) Ethane	1.806	55	0.288 ppmv
2) Ethylene	1.736	227	1.195 ppmv
3) Methane	1.341	686	5.053 ppmv

(f)=RT Delta > 1/2 Window

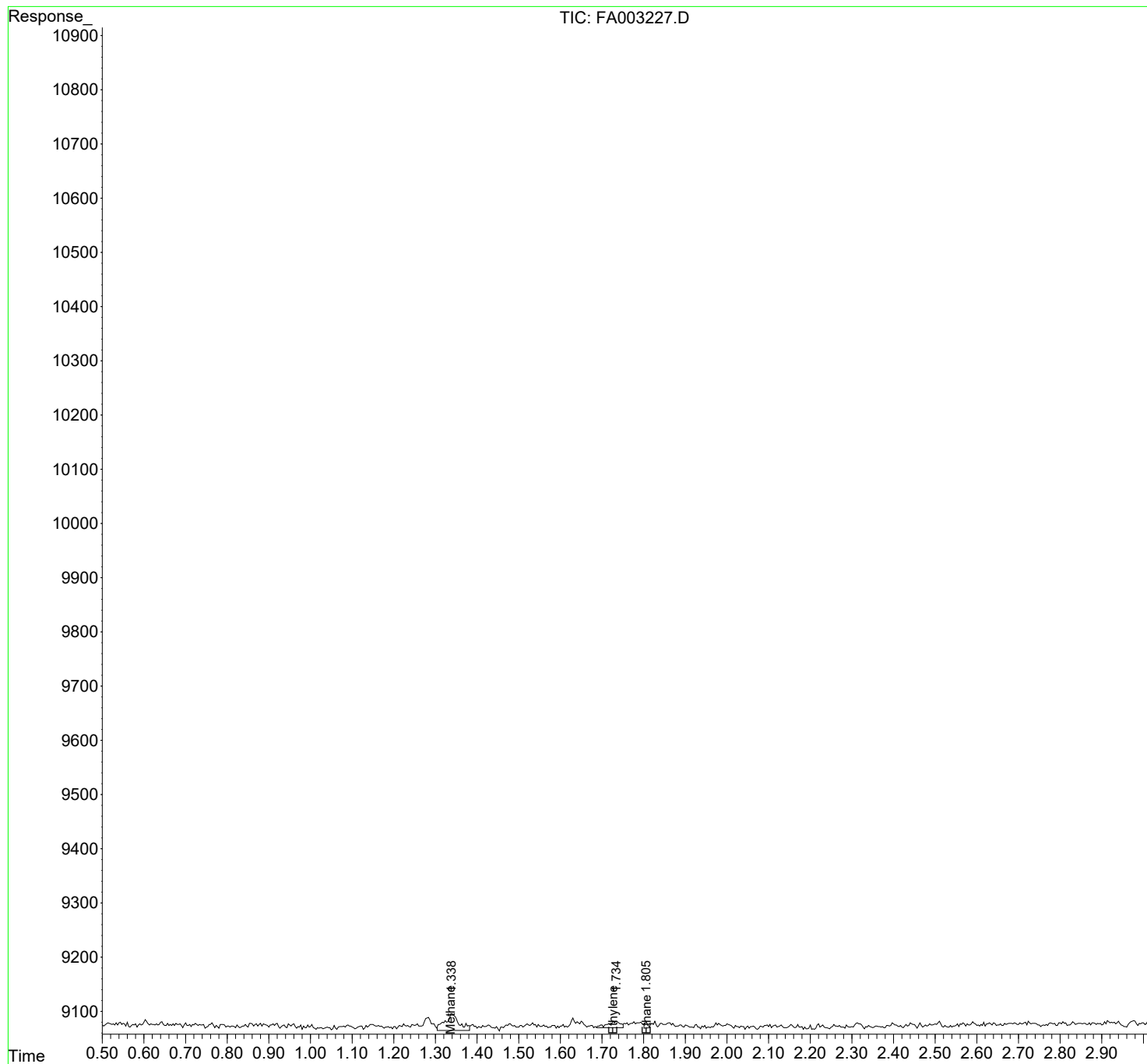
(m)=manual int.

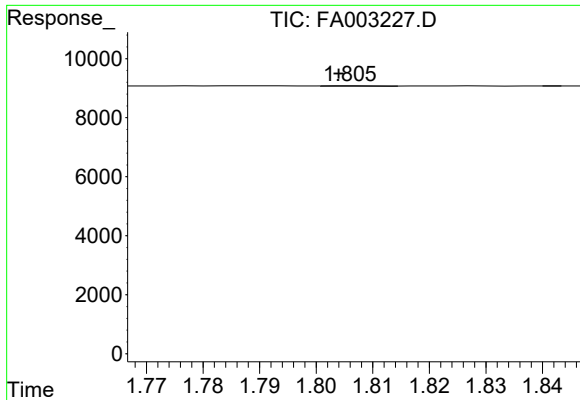
Data Path : Z:\pestpcbsrv\HPCHEM1\FID_A\Data\FA102921\
Data File : FA003227.D
Signal(s) : FID1A.CH
Acq On : 29 Oct 2021 10:05
Operator : SJ/MA
Sample : M4361-04
Misc :
ALS Vial : 14 Sample Multiplier: 1

Instrument :
FID_A
ClientSampleId :

Integration File: autoint1.e
Quant Time: Oct 29 10:10:08 2021
Quant Method : Z:\pestpcbsrv\HPCHEM1\FID_A\Method\FA102921 GASES.M
Quant Title :
QLast Update : Fri Oct 29 09:09:00 2021
Response via : Initial Calibration
Integrator: ChemStation

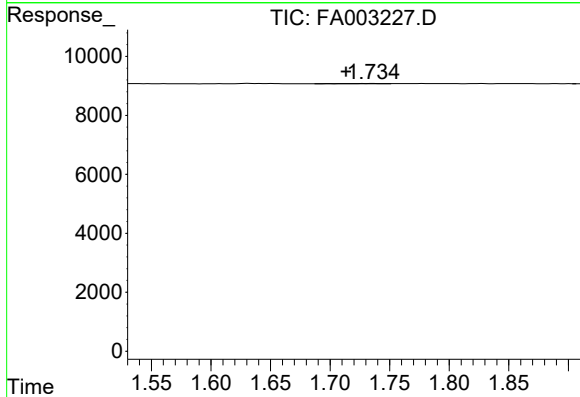
Volume Inj. :
Signal Phase : RT-U Plot
Signal Info : 30M x 0.32mm



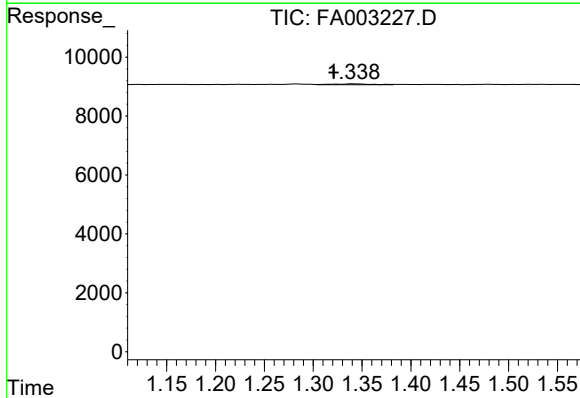


#1 Ethane
R.T.: 1.806 min
Delta R.T.: 0.002 min
Response: 55
Conc: 0.29 ppmv

Instrument :
FID_A
ClientSampleId :



#2 Ethylene
R.T.: 1.736 min
Delta R.T.: 0.022 min
Response: 227
Conc: 1.19 ppmv



#3 Methane
R.T.: 1.341 min
Delta R.T.: 0.020 min
Response: 686
Conc: 5.05 ppmv