

Data Path : Z:\pestpcbsrv\HPCHEM1\FID_A\Data\FA110321\
 Data File : FA003244.D
 Signal(s) : FID1A.CH
 Acq On : 3 Nov 2021 11:00
 Operator : SJ/MA
 Sample : M4410-09
 Misc :
 ALS Vial : 14 Sample Multiplier: 1

Instrument :
 FID_A
 ClientSampleId :

Integration File: autoint1.e
 Quant Time: Nov 03 16:43:29 2021
 Quant Method : Z:\pestpcbsrv\HPCHEM1\FID_A\Method\FA102921 GASES.M
 Quant Title :
 QLast Update : Fri Oct 29 09:09:00 2021
 Response via : Initial Calibration
 Integrator: ChemStation

Volume Inj. :
 Signal Phase : RT-U Plot
 Signal Info : 30M x 0.32mm

Compound	R.T.	Response	Conc Units

Target Compounds			
1) Ethane	1.826	218	1.149 ppmv
2) Ethylene	1.717	263	1.383 ppmv
3) Methane	1.322	783	5.762 ppmv

(f)=RT Delta > 1/2 Window

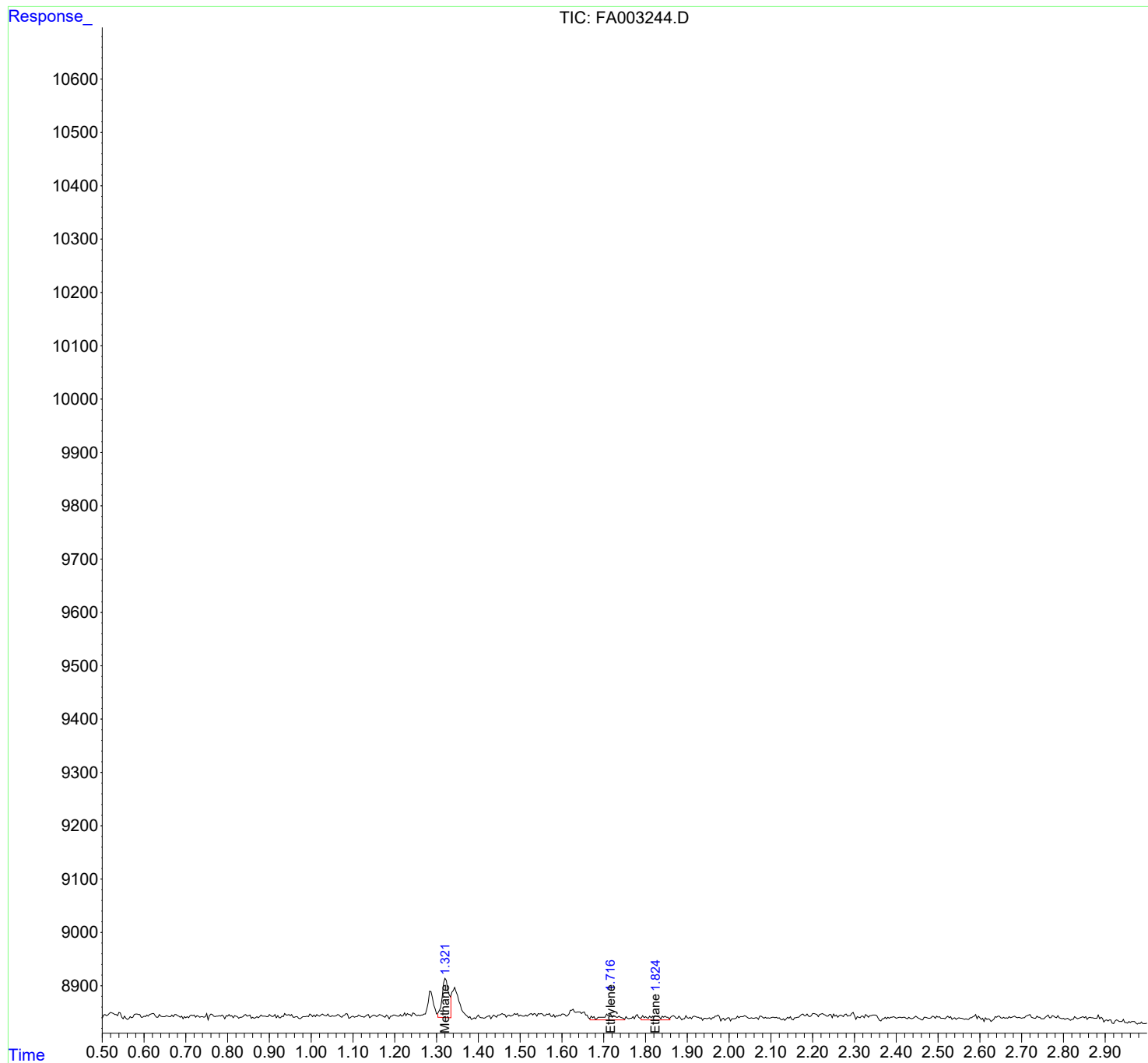
(m)=manual int.

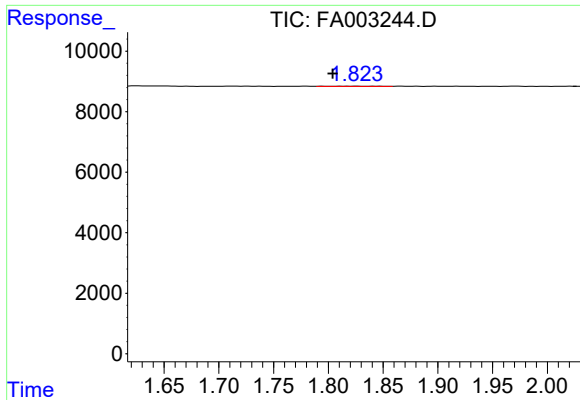
Data Path : Z:\pestpcbsrv\HPCHEM1\FID_A\Data\FA110321\
 Data File : FA003244.D
 Signal(s) : FID1A.CH
 Acq On : 3 Nov 2021 11:00
 Operator : SJ/MA
 Sample : M4410-09
 Misc :
 ALS Vial : 14 Sample Multiplier: 1

Instrument :
 FID_A
 ClientSampleId :

Integration File: autoint1.e
 Quant Time: Nov 03 16:43:29 2021
 Quant Method : Z:\pestpcbsrv\HPCHEM1\FID_A\Method\FA102921 GASES.M
 Quant Title :
 QLast Update : Fri Oct 29 09:09:00 2021
 Response via : Initial Calibration
 Integrator: ChemStation

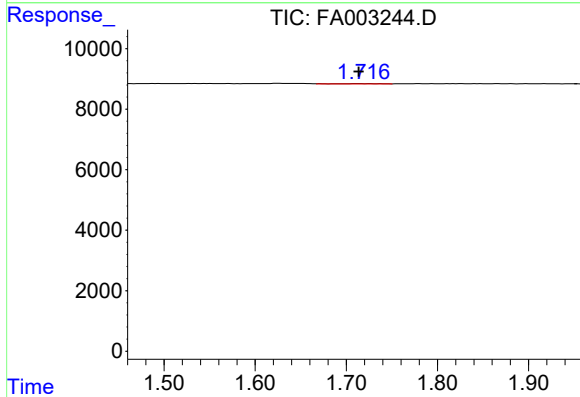
Volume Inj. :
 Signal Phase : RT-U Plot
 Signal Info : 30M x 0.32mm



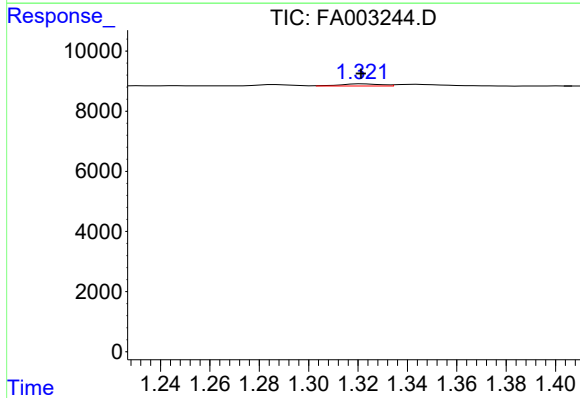


#1 Ethane
 R.T.: 1.826 min
 Delta R.T.: 0.022 min
 Response: 218
 Conc: 1.15 ppmv

Instrument :
 FID_A
 ClientSampleId :



#2 Ethylene
 R.T.: 1.717 min
 Delta R.T.: 0.003 min
 Response: 263
 Conc: 1.38 ppmv



#3 Methane
 R.T.: 1.322 min
 Delta R.T.: 0.000 min
 Response: 783
 Conc: 5.76 ppmv