

Data Path : Z:\pestpcbsrv\HPCHEM1\FID_A\Data\FA110323\
 Data File : FA004094.D
 Signal(s) : FID1A.CH
 Acq On : 3 Nov 2023 13:42
 Operator : YP\AJ
 Sample : 05222-05
 Misc :
 ALS Vial : 7 Sample Multiplier: 1

Instrument :
 FID_A
 ClientSampleId :

Integration File: autoint1.e
 Quant Time: Nov 06 16:01:43 2023
 Quant Method : Z:\pestpcbsrv\HPCHEM1\FID_A\Method\FA102623 GASES.M
 Quant Title :
 QLast Update : Thu Oct 26 08:17:45 2023
 Response via : Initial Calibration
 Integrator: ChemStation

Volume Inj. :
 Signal Phase : RT-U Plot
 Signal Info : 30M x 0.32mm

Compound	R.T.	Response	Conc Units

Target Compounds			
1) Ethane	1.772	173	0.395 ppmv
2) Ethylene	1.677	45	0.107 ppmv
3) Methane	1.344	1053	4.759 ppmv

(f)=RT Delta > 1/2 Window

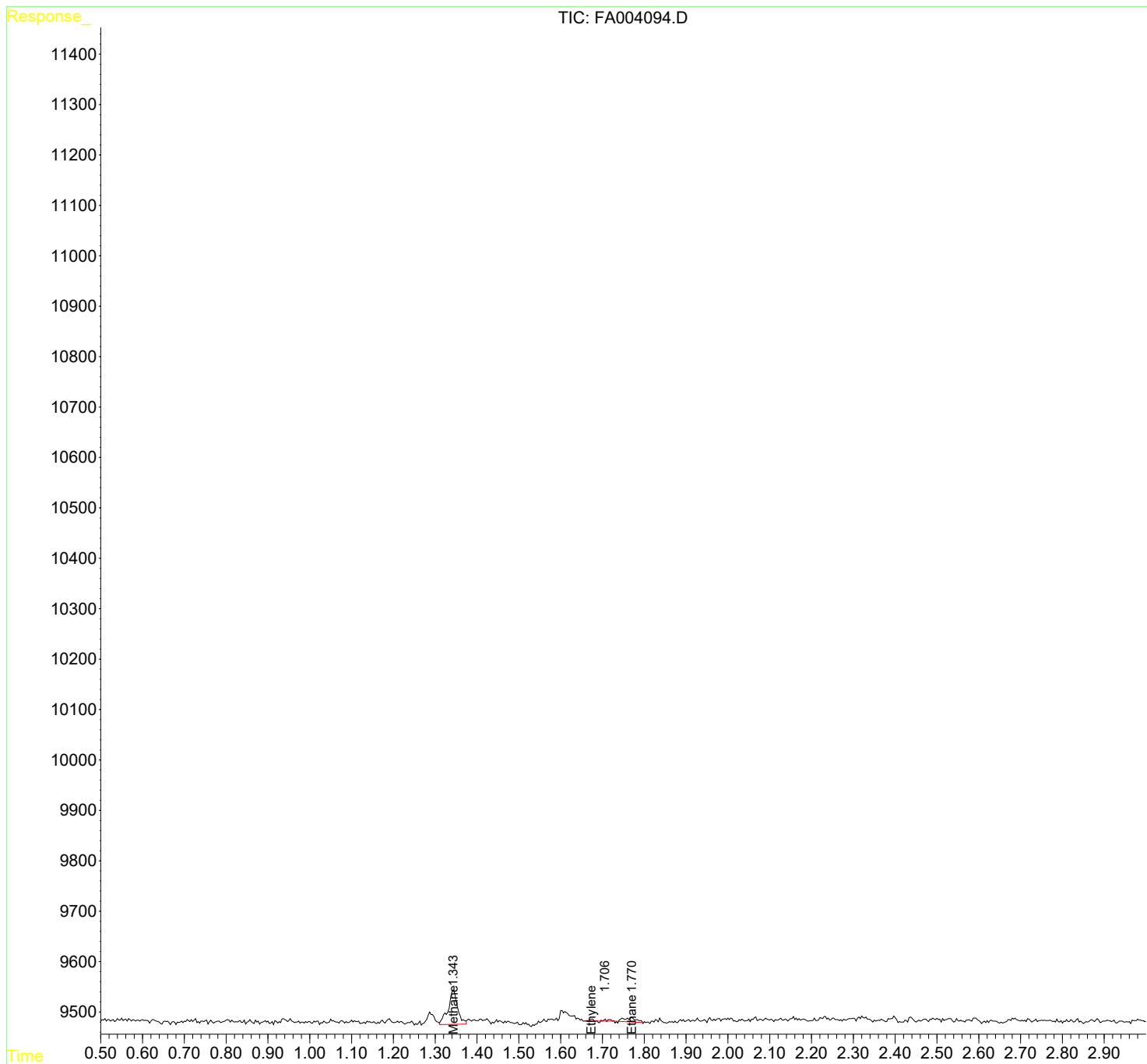
(m)=manual int.

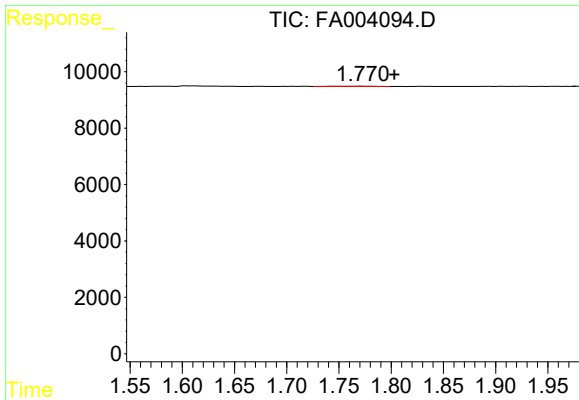
Data Path : Z:\pestpcbsrv\HPCHEM1\FID_A\Data\FA110323\
 Data File : FA004094.D
 Signal(s) : FID1A.CH
 Acq On : 3 Nov 2023 13:42
 Operator : YP\AJ
 Sample : 05222-05
 Misc :
 ALS Vial : 7 Sample Multiplier: 1

Instrument :
 FID_A
 ClientSampleId :

Integration File: autoint1.e
 Quant Time: Nov 06 16:01:43 2023
 Quant Method : Z:\pestpcbsrv\HPCHEM1\FID_A\Method\FA102623 GASES.M
 Quant Title :
 QLast Update : Thu Oct 26 08:17:45 2023
 Response via : Initial Calibration
 Integrator: ChemStation

Volume Inj. :
 Signal Phase : RT-U Plot
 Signal Info : 30M x 0.32mm

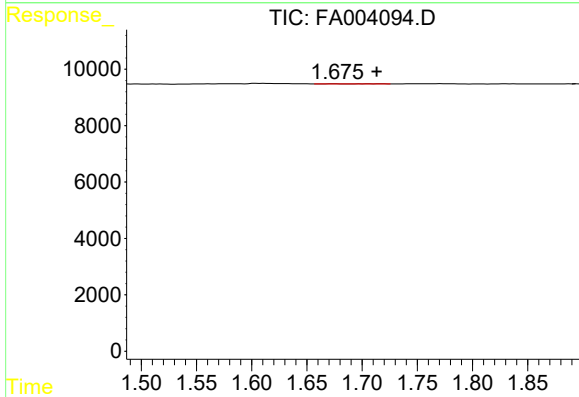




#1 Ethane

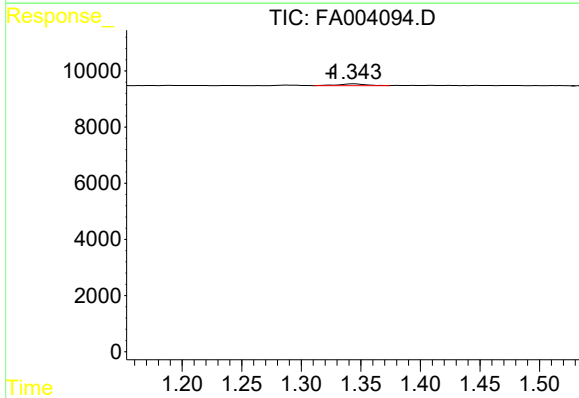
R.T.: 1.772 min
 Delta R.T.: -0.031 min
 Response: 173
 Conc: 0.40 ppmv

Instrument : FID_A
 ClientSampleId :



#2 Ethylene

R.T.: 1.677 min
 Delta R.T.: -0.036 min
 Response: 45
 Conc: 0.11 ppmv



#3 Methane

R.T.: 1.344 min
 Delta R.T.: 0.020 min
 Response: 1053
 Conc: 4.76 ppmv