

Data Path : Z:\pestpcbsrv\HPCHEM1\FID_A\Data\FA110323\
 Data File : FA004105.D
 Signal(s) : FID1A.CH
 Acq On : 3 Nov 2023 14:58
 Operator : YP\AJ
 Sample : 05222-16
 Misc :
 ALS Vial : 18 Sample Multiplier: 1

Instrument :
 FID_A
 ClientSampleId :

Integration File: autoint1.e
 Quant Time: Nov 06 16:12:55 2023
 Quant Method : Z:\pestpcbsrv\HPCHEM1\FID_A\Method\FA102623 GASES.M
 Quant Title :
 QLast Update : Thu Oct 26 08:17:45 2023
 Response via : Initial Calibration
 Integrator: ChemStation

Volume Inj. :
 Signal Phase : RT-U Plot
 Signal Info : 30M x 0.32mm

Compound	R.T.	Response	Conc Units

Target Compounds			
1) Ethane	1.822	107	0.244 ppmv
2) Ethylene	1.684	26	0.062 ppmv
3) Methane	1.319	536258	2424.422 ppmv

(f)=RT Delta > 1/2 Window

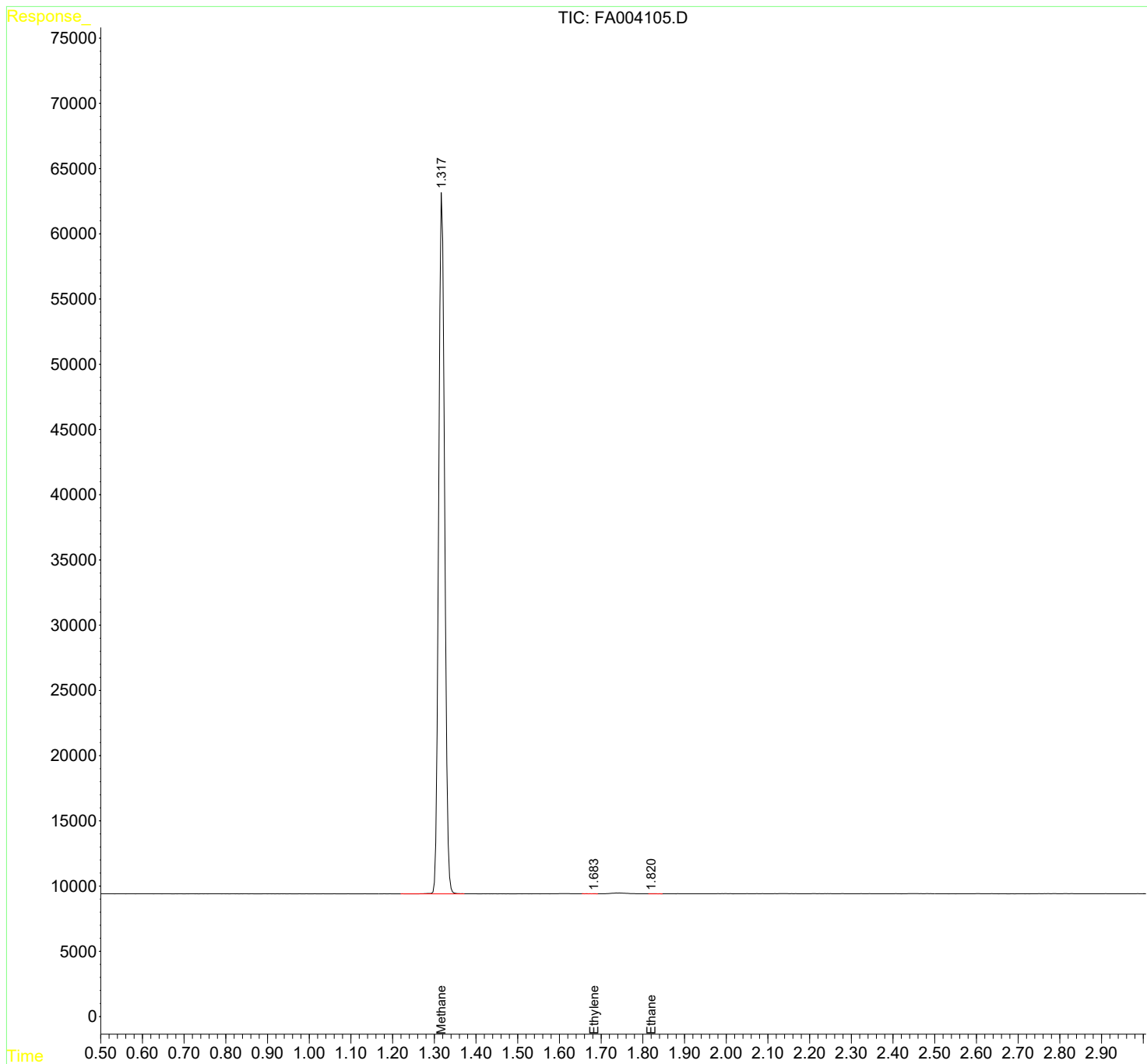
(m)=manual int.

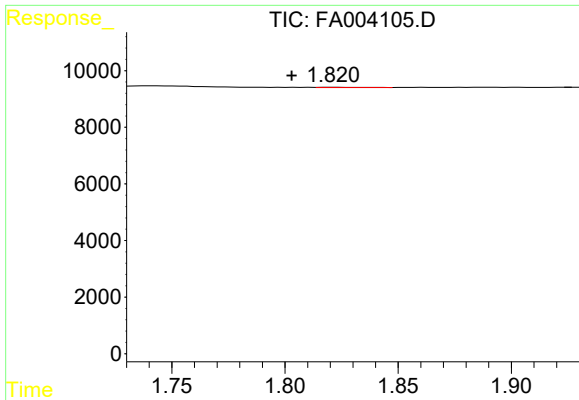
Data Path : Z:\pestpcbsrv\HPCHEM1\FID_A\Data\FA110323\
 Data File : FA004105.D
 Signal(s) : FID1A.CH
 Acq On : 3 Nov 2023 14:58
 Operator : YP\AJ
 Sample : 05222-16
 Misc :
 ALS Vial : 18 Sample Multiplier: 1

Instrument :
 FID_A
 ClientSampleId :

Integration File: autoint1.e
 Quant Time: Nov 06 16:12:55 2023
 Quant Method : Z:\pestpcbsrv\HPCHEM1\FID_A\Method\FA102623 GASES.M
 Quant Title :
 QLast Update : Thu Oct 26 08:17:45 2023
 Response via : Initial Calibration
 Integrator: ChemStation

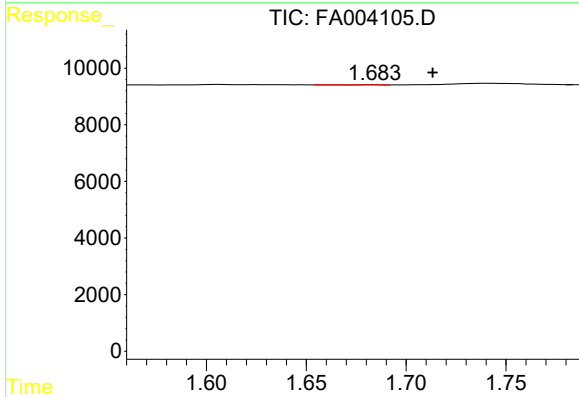
Volume Inj. :
 Signal Phase : RT-U Plot
 Signal Info : 30M x 0.32mm



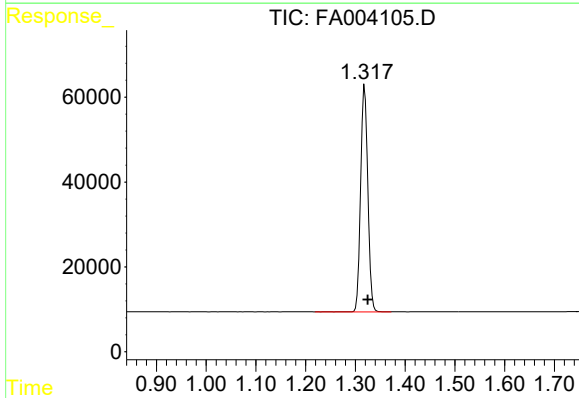


#1 Ethane
R.T.: 1.822 min
Delta R.T.: 0.019 min
Response: 107
Conc: 0.24 ppmv

Instrument :
FID_A
ClientSampleId :



#2 Ethylene
R.T.: 1.684 min
Delta R.T.: -0.029 min
Response: 26
Conc: 0.06 ppmv



#3 Methane
R.T.: 1.319 min
Delta R.T.: -0.006 min
Response: 536258
Conc: 2424.42 ppmv