

Data Path : Z:\pestpcbsrv\HPCHEM1\FID\_A\Data\FA111020\  
Data File : FA003069.D  
Signal(s) : FID1A.CH  
Acq On : 10 Nov 2020 10:46  
Operator : AJ/DD  
Sample : BSA1110G2  
Misc :  
ALS Vial : 10 Sample Multiplier: 1

Instrument :  
FID\_A  
ClientSampleId :  
BSA1110G2

Integration File: autoint1.e  
Quant Time: Nov 10 10:57:50 2020  
Quant Method : Z:\pestpcbsrv\HPCHEM1\FID\_A\Method\FA111020 GASES.M  
Quant Title :  
QLast Update : Tue Nov 10 10:18:24 2020  
Response via : Initial Calibration  
Integrator: ChemStation

Volume Inj. :  
Signal Phase : RT-U Plot  
Signal Info : 30M x 0.32mm

Compound	R.T.	Response	Conc Units
-----			
Target Compounds			
1) Ethane	2.800	16315	156.356 ppmv
2) Ethylene	2.741	15943	158.261 ppmv
3) Methane	2.350	10439	158.330 ppmv
-----			

(f)=RT Delta > 1/2 Window

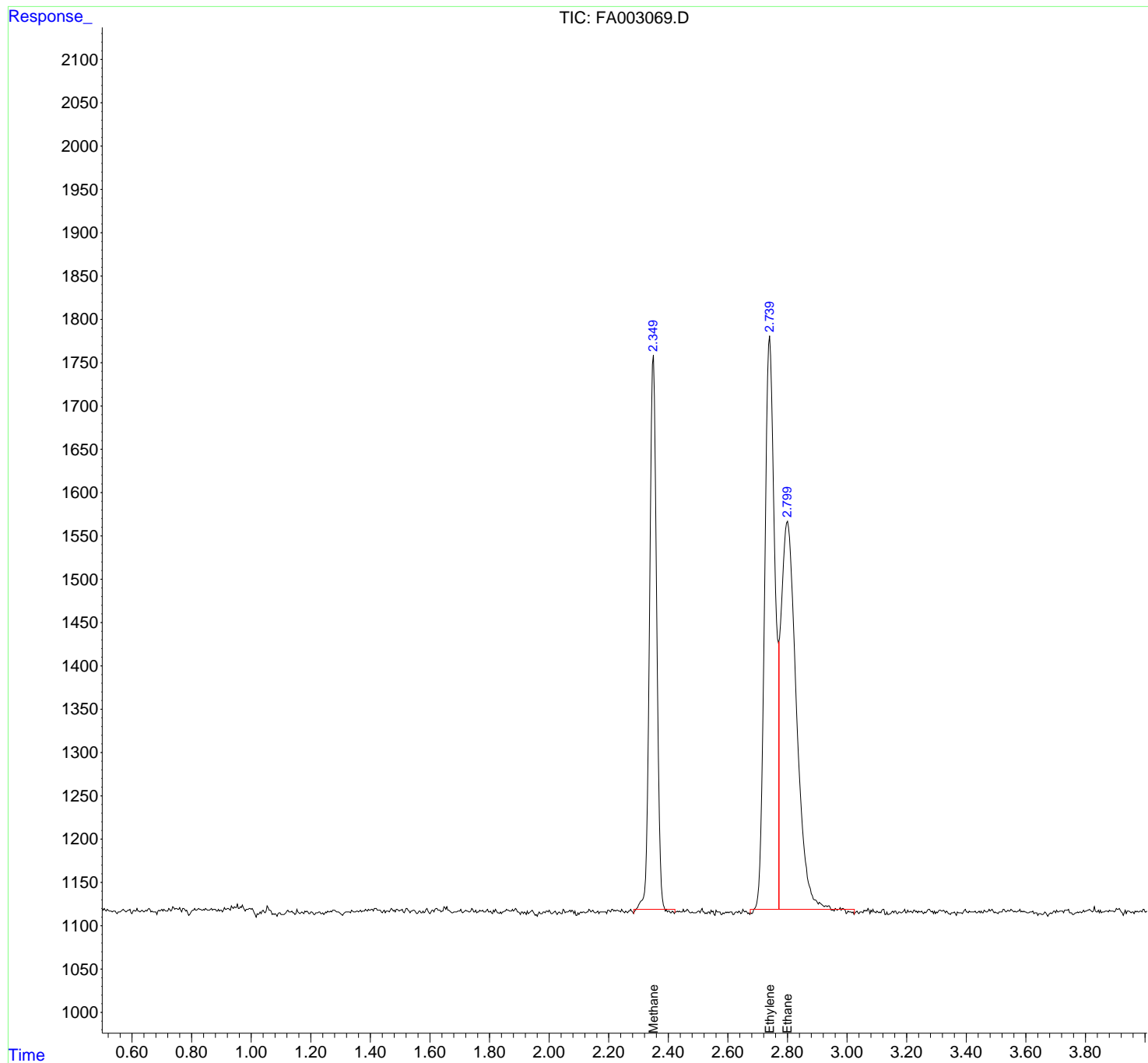
(m)=manual int.

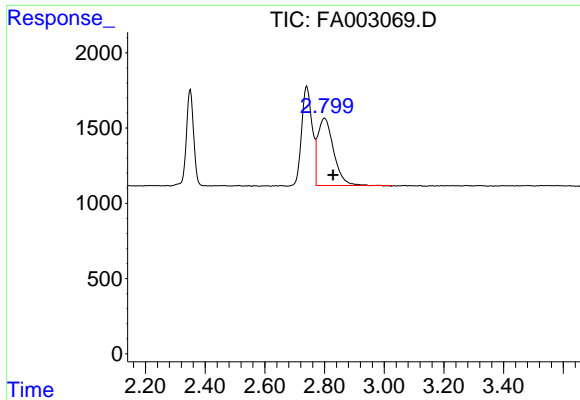
Data Path : Z:\pestpcbsrv\HPCHEM1\FID\_A\Data\FA111020\  
 Data File : FA003069.D  
 Signal(s) : FID1A.CH  
 Acq On : 10 Nov 2020 10:46  
 Operator : AJ/DD  
 Sample : BSA1110G2  
 Misc :  
 ALS Vial : 10 Sample Multiplier: 1

Instrument :  
 FID\_A  
 ClientSampleId :  
 BSA1110G2

Integration File: autoint1.e  
 Quant Time: Nov 10 10:57:50 2020  
 Quant Method : Z:\pestpcbsrv\HPCHEM1\FID\_A\Method\FA111020 GASES.M  
 Quant Title :  
 QLast Update : Tue Nov 10 10:18:24 2020  
 Response via : Initial Calibration  
 Integrator: ChemStation

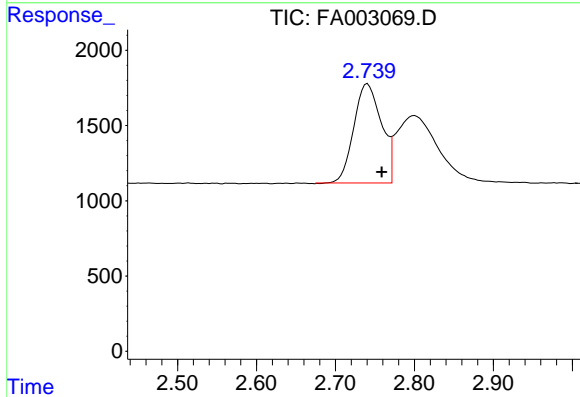
Volume Inj. :  
 Signal Phase : RT-U Plot  
 Signal Info : 30M x 0.32mm



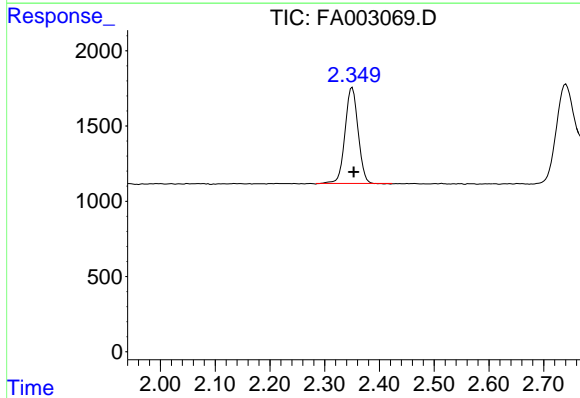


#1 Ethane  
 R.T.: 2.800 min  
 Delta R.T.: -0.028 min  
 Response: 16315  
 Conc: 156.36 ppmv

Instrument :  
 FID\_A  
 ClientSampleId :  
 BSA1110G2



#2 Ethylene  
 R.T.: 2.741 min  
 Delta R.T.: -0.018 min  
 Response: 15943  
 Conc: 158.26 ppmv



#3 Methane  
 R.T.: 2.350 min  
 Delta R.T.: -0.003 min  
 Response: 10439  
 Conc: 158.33 ppmv