

Data Path : Z:\pestpcbsrv\HPCHEM1\FID\_A\Data\FA111622\  
 Data File : FA003619.D  
 Signal(s) : FID1A.CH  
 Acq On : 16 Nov 2022 13:12  
 Operator : SJ/MA  
 Sample : N5551-13DL 50X  
 Misc :  
 ALS Vial : 21 Sample Multiplier: 1

Instrument :  
 FID\_A  
 ClientSampleId :

Integration File: autoint1.e  
 Quant Time: Nov 16 13:05:19 2022  
 Quant Method : Z:\pestpcbsrv\HPCHEM1\FID\_A\Method\FA111622 GASES.M  
 Quant Title :  
 QLast Update : Wed Nov 16 09:16:36 2022  
 Response via : Initial Calibration  
 Integrator: ChemStation

Volume Inj. :  
 Signal Phase : RT-U Plot  
 Signal Info : 30M x 0.32mm

Compound	R.T.	Response	Conc Units
-----			
Target Compounds			
1) Ethane	1.767	780	2.315 ppmv
2) Ethylene	1.659	226	0.680 ppmv
3) Methane	1.321	67366	353.664 ppmv
-----			

(f)=RT Delta > 1/2 Window

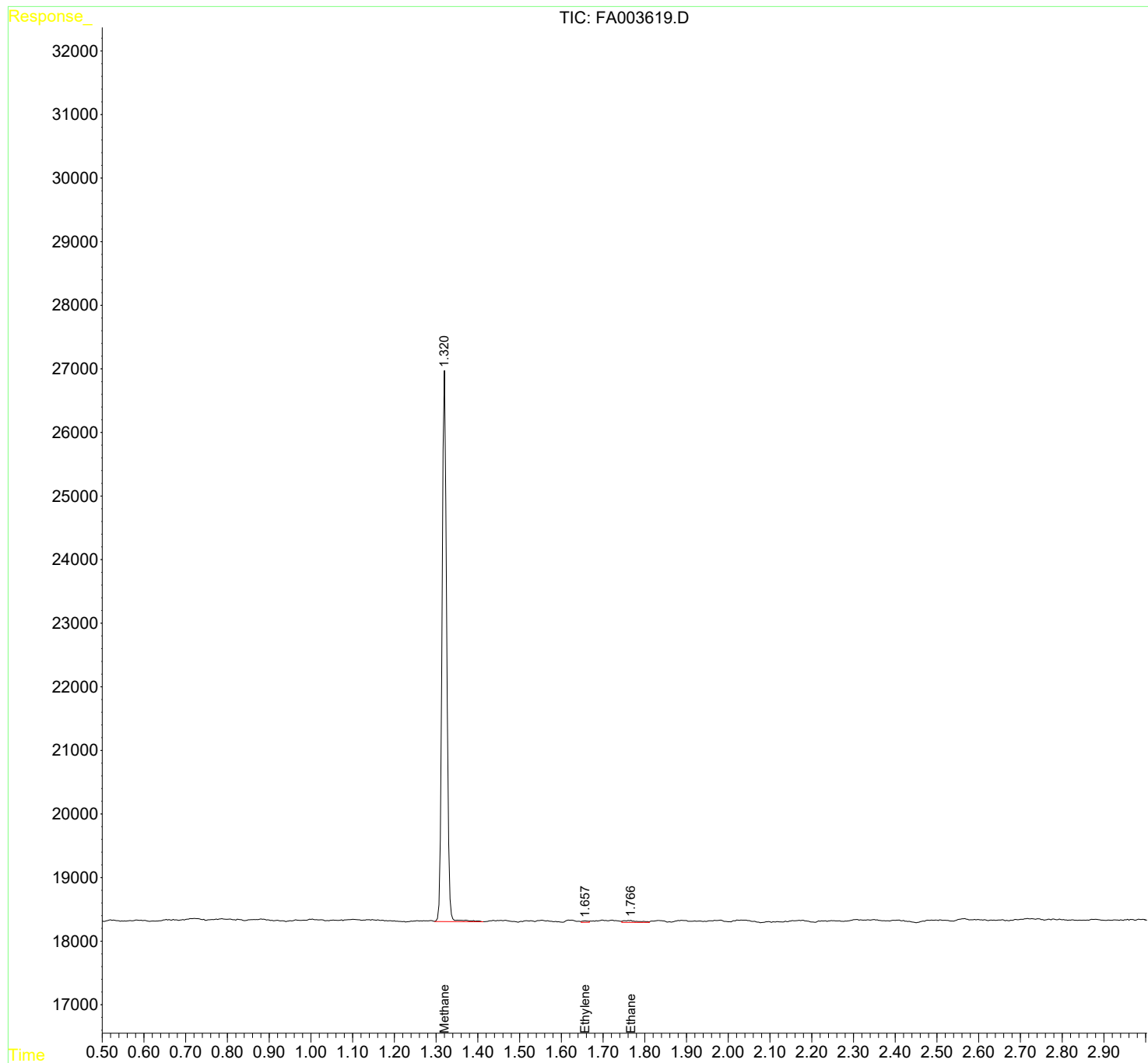
(m)=manual int.

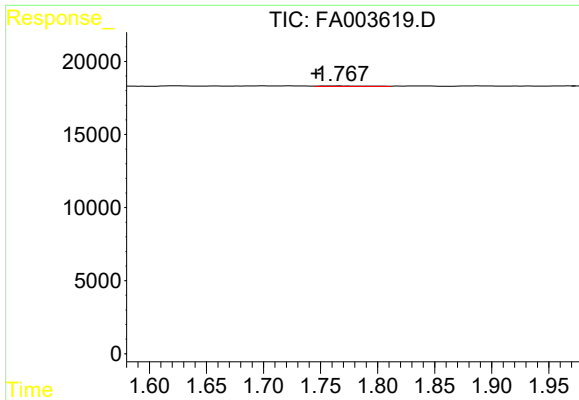
Data Path : Z:\pestpcbsrv\HPCHEM1\FID\_A\Data\FA111622\  
 Data File : FA003619.D  
 Signal(s) : FID1A.CH  
 Acq On : 16 Nov 2022 13:12  
 Operator : SJ/MA  
 Sample : N5551-13DL 50X  
 Misc :  
 ALS Vial : 21 Sample Multiplier: 1

Instrument :  
 FID\_A  
 ClientSampleId :

Integration File: autoint1.e  
 Quant Time: Nov 16 13:05:19 2022  
 Quant Method : Z:\pestpcbsrv\HPCHEM1\FID\_A\Method\FA111622 GASES.M  
 Quant Title :  
 QLast Update : Wed Nov 16 09:16:36 2022  
 Response via : Initial Calibration  
 Integrator: ChemStation

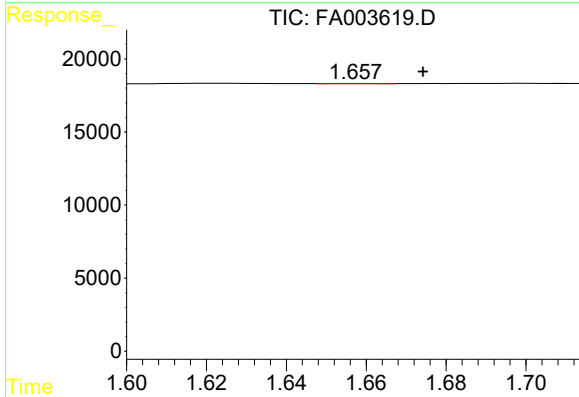
Volume Inj. :  
 Signal Phase : RT-U Plot  
 Signal Info : 30M x 0.32mm



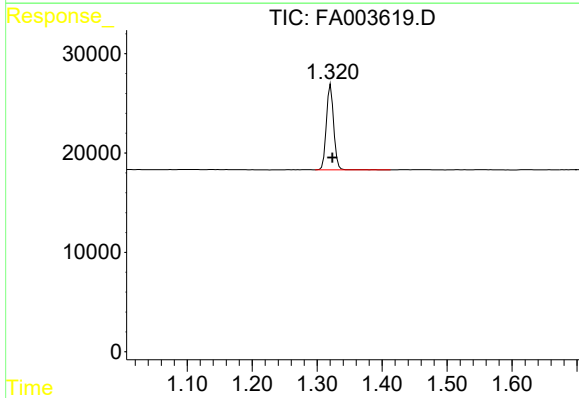


#1 Ethane  
 R.T.: 1.767 min  
 Delta R.T.: 0.021 min  
 Response: 780  
 Conc: 2.32 ppmv

Instrument :  
 FID\_A  
 ClientSampleId :



#2 Ethylene  
 R.T.: 1.659 min  
 Delta R.T.: -0.016 min  
 Response: 226  
 Conc: 0.68 ppmv



#3 Methane  
 R.T.: 1.321 min  
 Delta R.T.: -0.003 min  
 Response: 67366  
 Conc: 353.66 ppmv