

Data Path : Z:\pestpcbsrv\HPCHEM1\FID_A\Data\FA111924\
 Data File : FA004292.D
 Signal(s) : FID1A.CH
 Acq On : 19 Nov 2024 15:05
 Operator : YP\AJ
 Sample : P4846-15
 Misc :
 ALS Vial : 29 Sample Multiplier: 1

Instrument :
 FID_A
ClientSampleId :
 FSND-FD-4-20241113

Integration File: autoint1.e
 Quant Time: Nov 19 13:40:18 2024
 Quant Method : Z:\pestpcbsrv\HPCHEM1\FID_A\Method\FA111924 GASES.M
 Quant Title :
 QLast Update : Tue Nov 19 09:34:35 2024
 Response via : Initial Calibration
 Integrator: ChemStation

Volume Inj. :
 Signal Phase : RT-U Plot
 Signal Info : 30M x 0.32mm

Compound	R.T.	Response	Conc Units

Target Compounds			
1) Ethane	1.710	822	1.713 ppmv
2) Ethylene	1.654	1954	4.312 ppmv
3) Methane	1.334	1920	7.639 ppmv

(f)=RT Delta > 1/2 Window

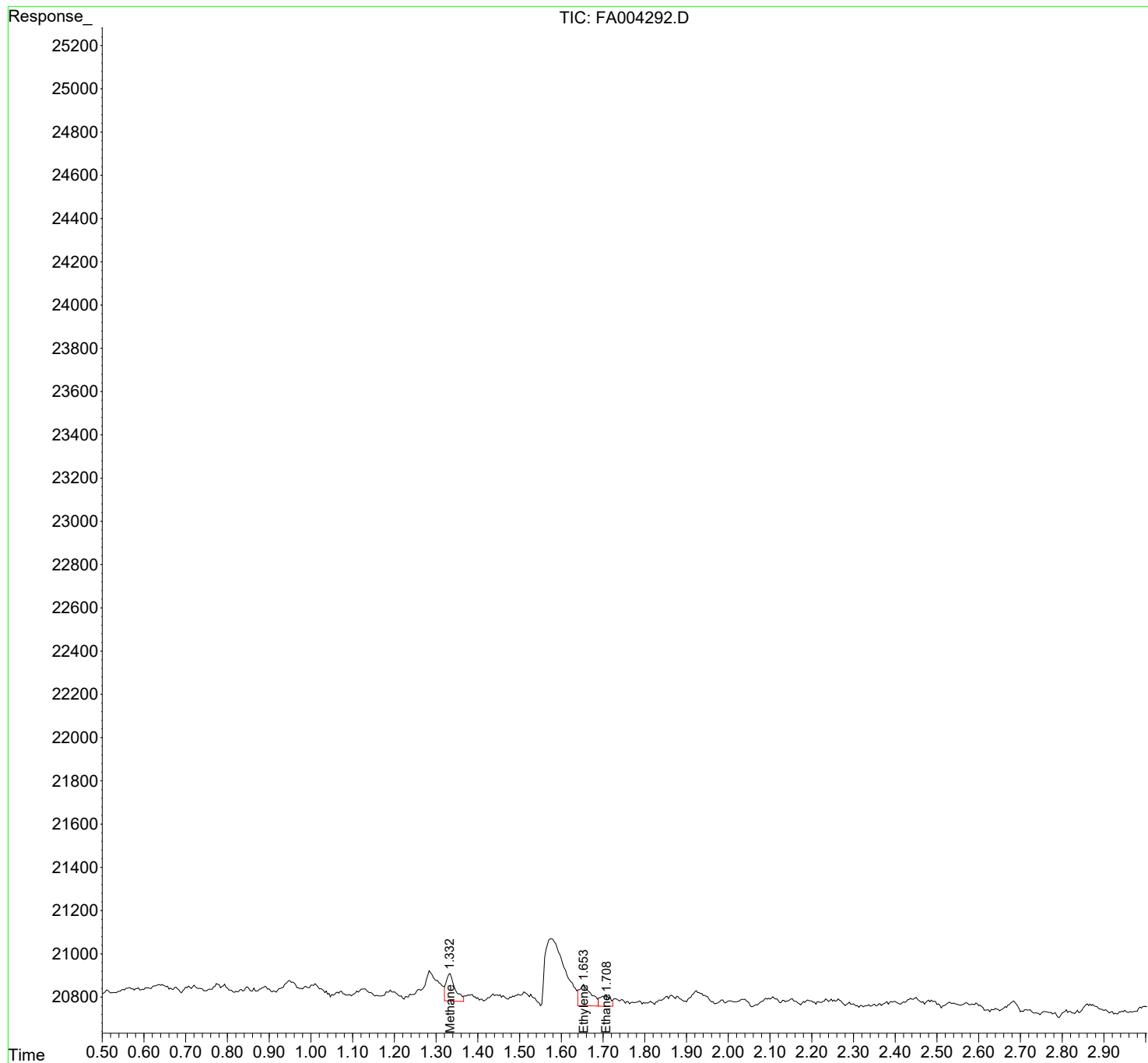
(m)=manual int.

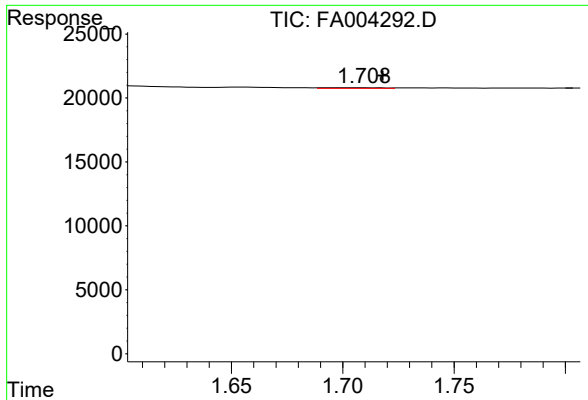
Data Path : Z:\pestpcbsrv\HPCHEM1\FID_A\Data\FA111924\
 Data File : FA004292.D
 Signal(s) : FID1A.CH
 Acq On : 19 Nov 2024 15:05
 Operator : YP\AJ
 Sample : P4846-15
 Misc :
 ALS Vial : 29 Sample Multiplier: 1

Instrument :
 FID_A
ClientSampleId :
 FSND-FD-4-20241113

Integration File: autoint1.e
 Quant Time: Nov 19 13:40:18 2024
 Quant Method : Z:\pestpcbsrv\HPCHEM1\FID_A\Method\FA111924 GASES.M
 Quant Title :
 QLast Update : Tue Nov 19 09:34:35 2024
 Response via : Initial Calibration
 Integrator: ChemStation

Volume Inj. :
 Signal Phase : RT-U Plot
 Signal Info : 30M x 0.32mm

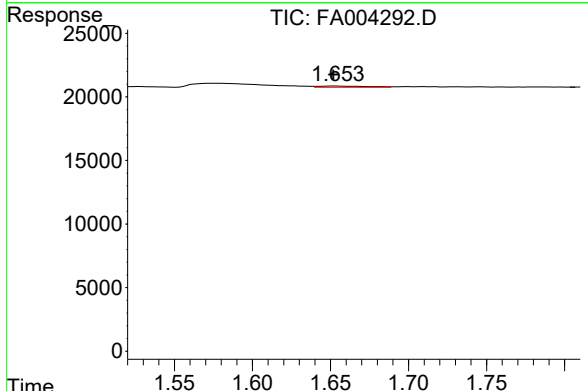




#1 Ethane

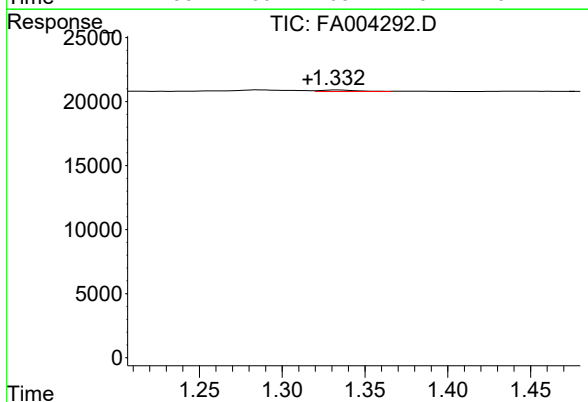
R.T.: 1.710 min
 Delta R.T.: -0.008 min
 Response: 822
 Conc: 1.71 ppmv

Instrument : FID_A
 ClientSampleId : FSND-FD-4-20241113



#2 Ethylene

R.T.: 1.654 min
 Delta R.T.: 0.002 min
 Response: 1954
 Conc: 4.31 ppmv



#3 Methane

R.T.: 1.334 min
 Delta R.T.: 0.018 min
 Response: 1920
 Conc: 7.64 ppmv