

Data Path : Z:\pestpcbsrv\HPCHEM1\FID_A\Data\FA120222\
Data File : FA003629.D
Signal(s) : FID1A.CH
Acq On : 2 Dec 2022 9:27
Operator : SJ/MA
Sample : 20 PPMV GASES ICV
Misc :
ALS Vial : 6 Sample Multiplier: 1

Instrument :
FID_A
ClientSampleId :

Integration File: autoint1.e
Quant Time: Dec 02 09:19:47 2022
Quant Method : Z:\pestpcbsrv\HPCHEM1\FID_A\Method\FA120222 GASES.M
Quant Title :
QLast Update : Fri Dec 02 09:14:43 2022
Response via : Initial Calibration
Integrator: ChemStation

Volume Inj. :
Signal Phase : RT-U Plot
Signal Info : 30M x 0.32mm

Compound	R.T.	Response	Conc Units

Target Compounds			
1) Ethane	1.678	24065	174.003 ppmv
2) Ethylene	1.626	25025	171.087 ppmv
3) Methane	1.318	24500	175.449 ppmv

(f)=RT Delta > 1/2 Window

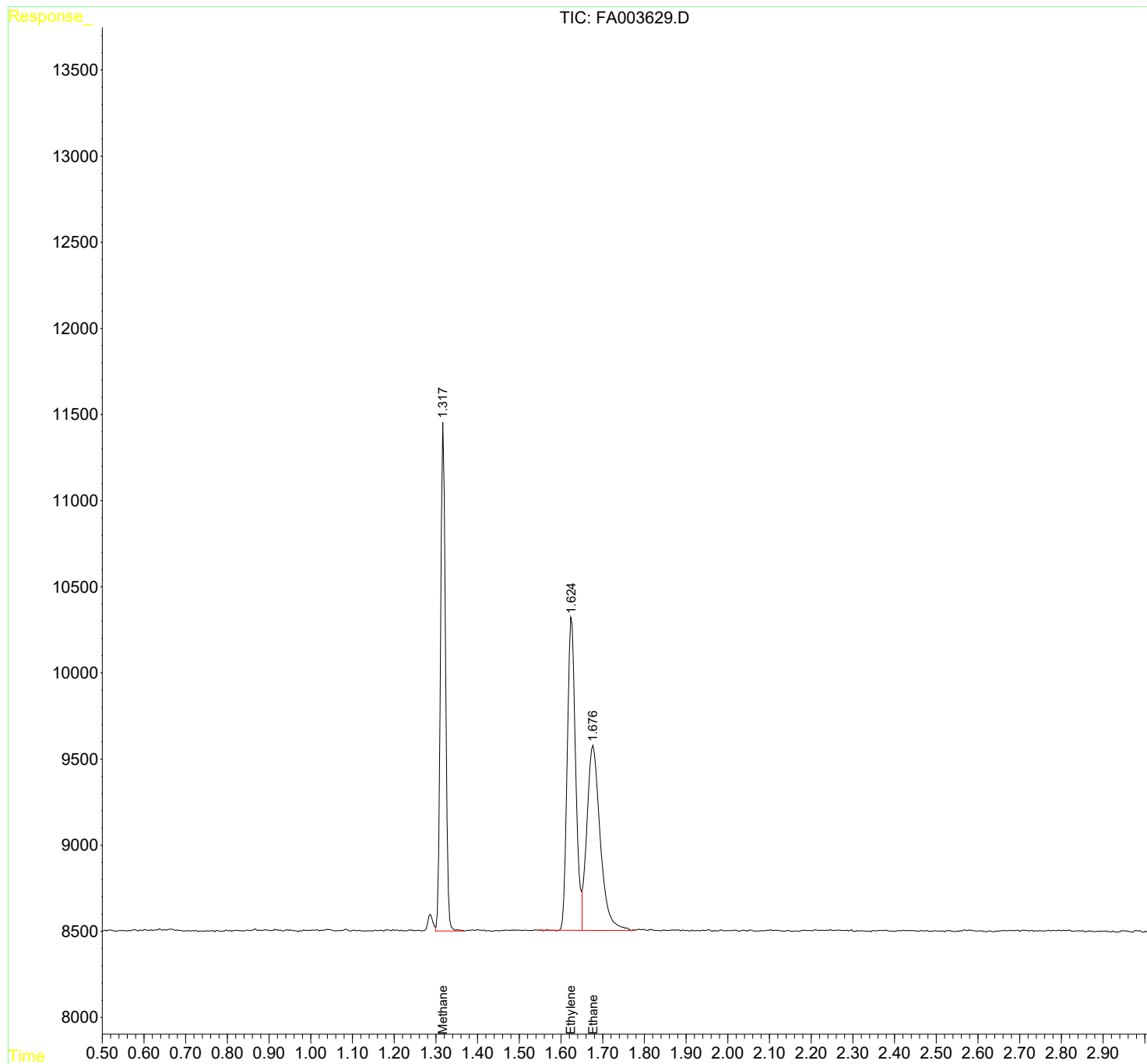
(m)=manual int.

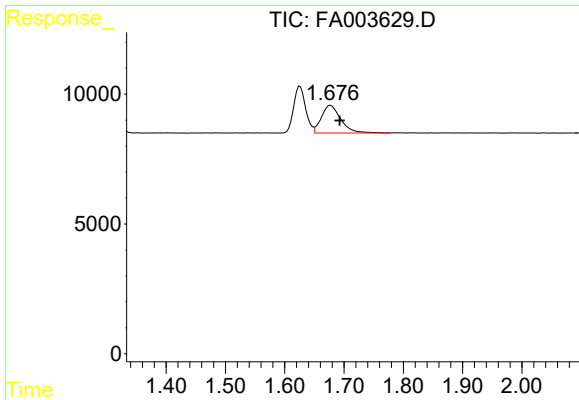
Data Path : Z:\pestpcbsrv\HPCHEM1\FID_A\Data\FA120222\
Data File : FA003629.D
Signal(s) : FID1A.CH
Acq On : 2 Dec 2022 9:27
Operator : SJ/MA
Sample : 20 PPMV GASES ICV
Misc :
ALS Vial : 6 Sample Multiplier: 1

Instrument :
FID_A
ClientSampleId :

Integration File: autoint1.e
Quant Time: Dec 02 09:19:47 2022
Quant Method : Z:\pestpcbsrv\HPCHEM1\FID_A\Method\FA120222 GASES.M
Quant Title :
QLast Update : Fri Dec 02 09:14:43 2022
Response via : Initial Calibration
Integrator: ChemStation

Volume Inj. :
Signal Phase : RT-U Plot
Signal Info : 30M x 0.32mm

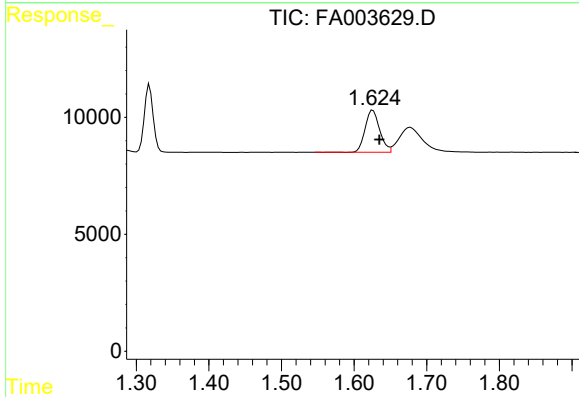




#1 Ethane

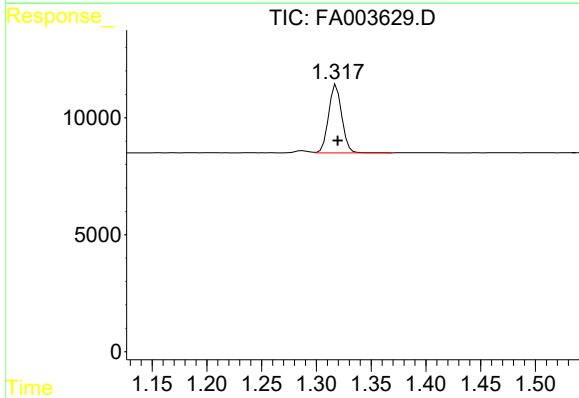
R.T.: 1.678 min
 Delta R.T.: -0.015 min
 Response: 24065
 Conc: 174.00 ppmv

Instrument :
 FID_A
 ClientSampleId :



#2 Ethylene

R.T.: 1.626 min
 Delta R.T.: -0.009 min
 Response: 25025
 Conc: 171.09 ppmv



#3 Methane

R.T.: 1.318 min
 Delta R.T.: -0.001 min
 Response: 24500
 Conc: 175.45 ppmv