

Data Path : Z:\pestpcbsrv\HPCHEM1\FID\_A\Data\FA120522\  
 Data File : FA003653.D  
 Signal(s) : FID1A.CH  
 Acq On : 5 Dec 2022 13:07  
 Operator : SJ/MA  
 Sample : N5841-03  
 Misc :  
 ALS Vial : 12 Sample Multiplier: 1

Instrument :  
 FID\_A  
 ClientSampleId :

Integration File: autoint1.e  
 Quant Time: Dec 05 12:59:28 2022  
 Quant Method : Z:\pestpcbsrv\HPCHEM1\FID\_A\Method\FA120522 GASES.M  
 Quant Title :  
 QLast Update : Mon Dec 05 12:02:33 2022  
 Response via : Initial Calibration  
 Integrator: ChemStation

Volume Inj. :  
 Signal Phase : RT-U Plot  
 Signal Info : 30M x 0.32mm

Compound	R.T.	Response	Conc Units
-----			
Target Compounds			
1) Ethane	1.645	3392	11.434 ppmv
2) Ethylene	1.606	3977	14.623 ppmv
3) Methane	1.346	7389	43.665 ppmv
-----			

(f)=RT Delta > 1/2 Window

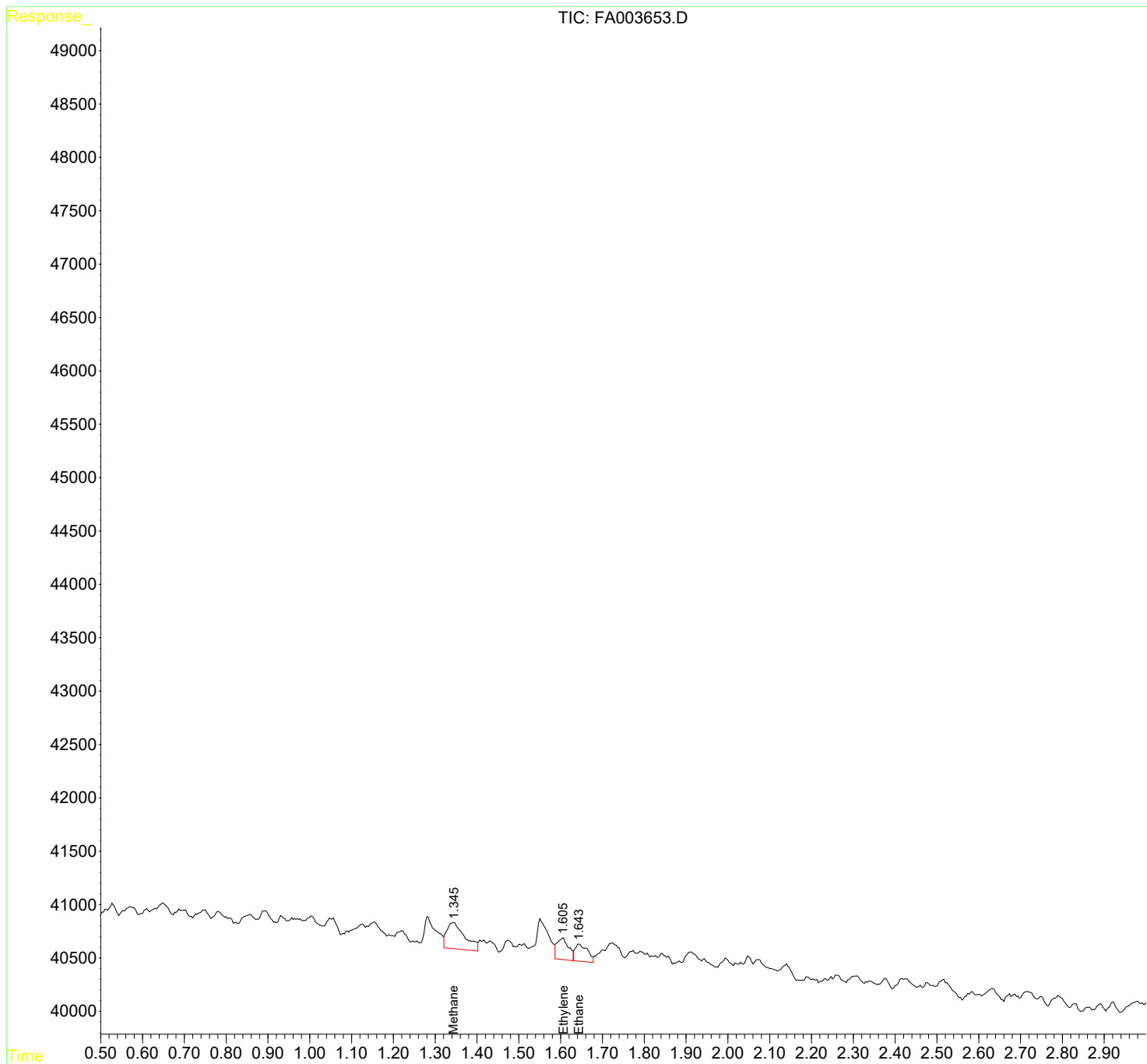
(m)=manual int.

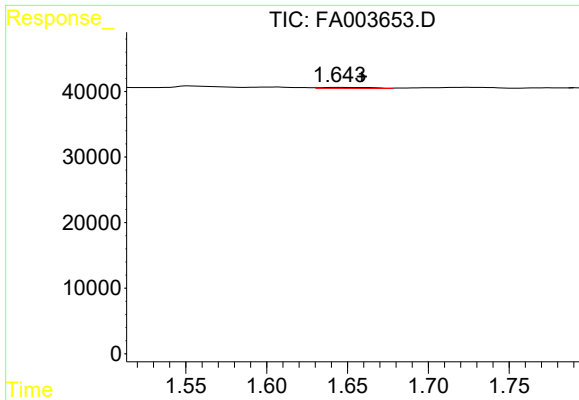
Data Path : Z:\pestpcbsrv\HPCHEM1\FID\_A\Data\FA120522\  
 Data File : FA003653.D  
 Signal(s) : FID1A.CH  
 Acq On : 5 Dec 2022 13:07  
 Operator : SJ/MA  
 Sample : N5841-03  
 Misc :  
 ALS Vial : 12 Sample Multiplier: 1

Instrument :  
 FID\_A  
 ClientSampleId :

Integration File: autoint1.e  
 Quant Time: Dec 05 12:59:28 2022  
 Quant Method : Z:\pestpcbsrv\HPCHEM1\FID\_A\Method\FA120522 GASES.M  
 Quant Title :  
 QLast Update : Mon Dec 05 12:02:33 2022  
 Response via : Initial Calibration  
 Integrator: ChemStation

Volume Inj. :  
 Signal Phase : RT-U Plot  
 Signal Info : 30M x 0.32mm

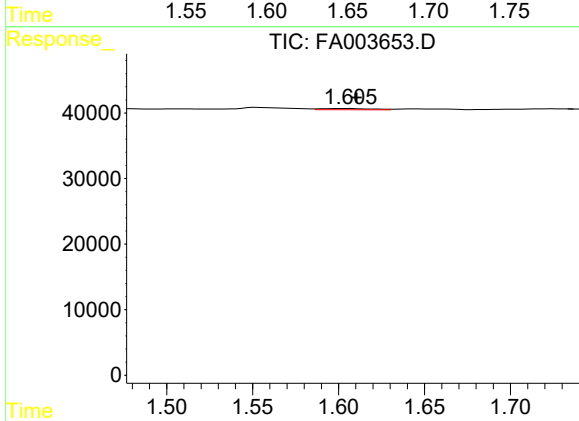




#1 Ethane

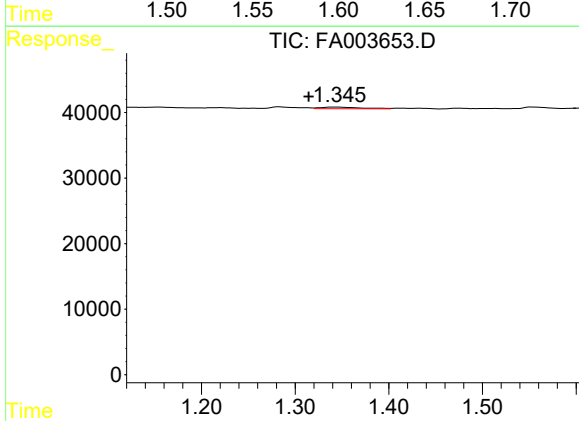
R.T.: 1.645 min  
 Delta R.T.: -0.014 min  
 Response: 3392  
 Conc: 11.43 ppmv

Instrument : FID\_A  
 ClientSampleId :



#2 Ethylene

R.T.: 1.606 min  
 Delta R.T.: -0.004 min  
 Response: 3977  
 Conc: 14.62 ppmv



#3 Methane

R.T.: 1.346 min  
 Delta R.T.: 0.031 min  
 Response: 7389  
 Conc: 43.67 ppmv