

Data Path : Z:\pestpcbsrv\HPCHEM1\FID\_A\Data\FA120622\  
Data File : FA003667.D  
Signal(s) : FID1A.CH  
Acq On : 6 Dec 2022 10:08  
Operator : SJ/MA  
Sample : N5841-19D  
Misc :  
ALS Vial : 10 Sample Multiplier: 1

Instrument :  
FID\_A  
ClientSampleId :

Integration File: autoint1.e  
Quant Time: Dec 06 10:02:03 2022  
Quant Method : Z:\pestpcbsrv\HPCHEM1\FID\_A\Method\FA120522 GASES.M  
Quant Title :  
QLast Update : Tue Dec 06 08:56:38 2022  
Response via : Initial Calibration  
Integrator: ChemStation

Volume Inj. :  
Signal Phase : RT-U Plot  
Signal Info : 30M x 0.32mm

Compound	R.T.	Response	Conc Units
-----			
Target Compounds			
1) Ethane	1.753	81	0.273 ppmv
2) Ethylene	1.644	291	1.072 ppmv
3) Methane	1.322	868	5.127 ppmv

(f)=RT Delta > 1/2 Window

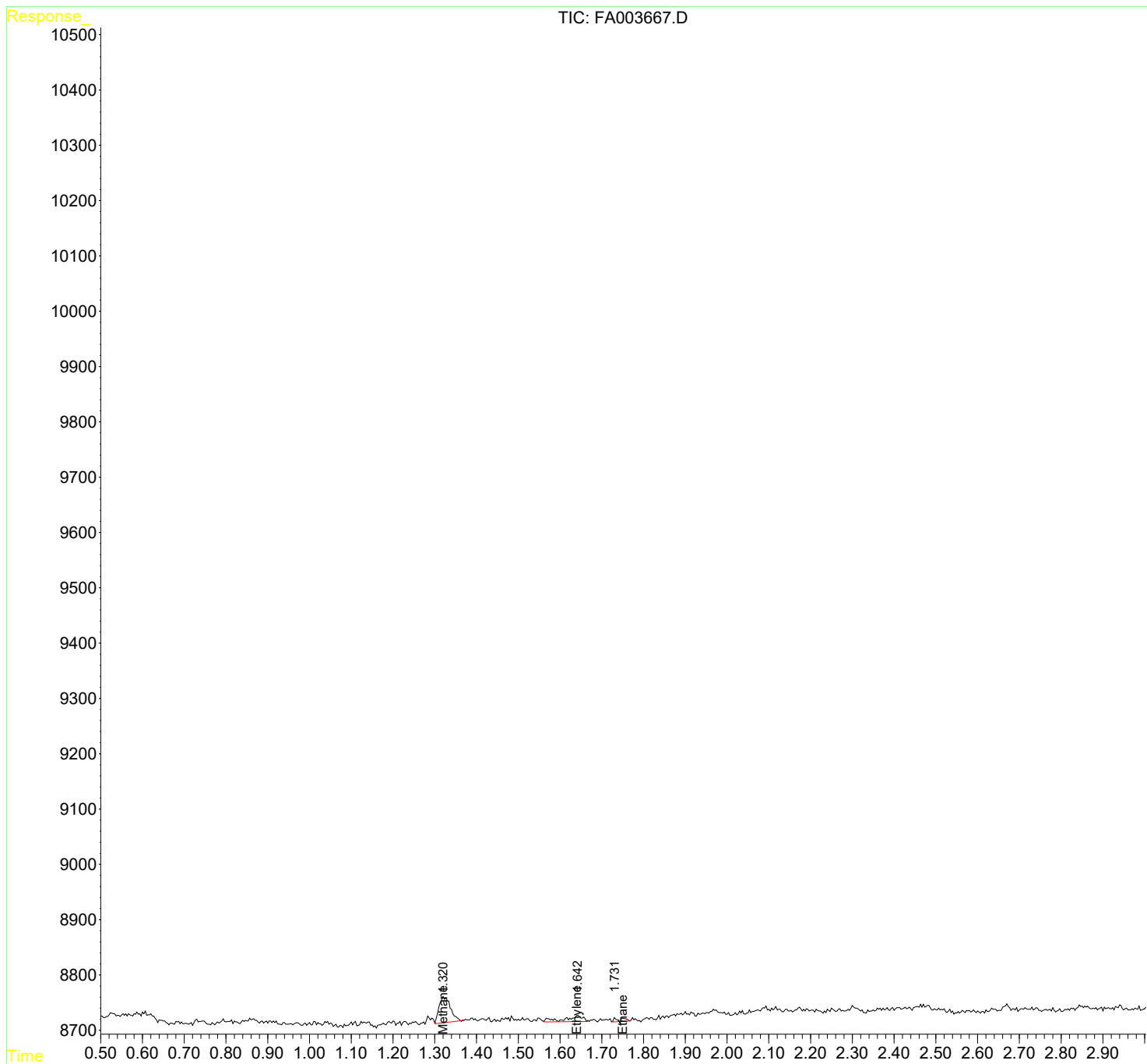
(m)=manual int.

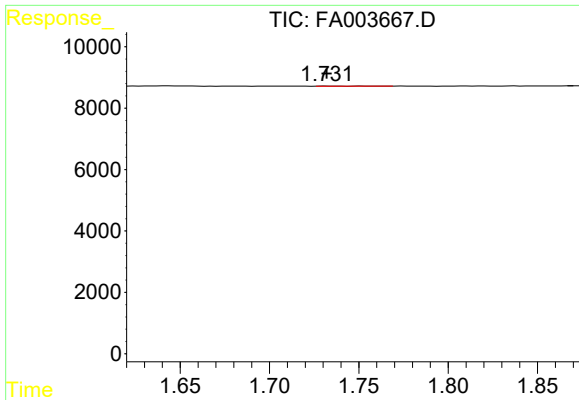
Data Path : Z:\pestpcbsrv\HPCHEM1\FID\_A\Data\FA120622\  
 Data File : FA003667.D  
 Signal(s) : FID1A.CH  
 Acq On : 6 Dec 2022 10:08  
 Operator : SJ/MA  
 Sample : N5841-19D  
 Misc :  
 ALS Vial : 10 Sample Multiplier: 1

Instrument :  
 FID\_A  
 ClientSampleId :

Integration File: autoint1.e  
 Quant Time: Dec 06 10:02:03 2022  
 Quant Method : Z:\pestpcbsrv\HPCHEM1\FID\_A\Method\FA120522 GASES.M  
 Quant Title :  
 QLast Update : Tue Dec 06 08:56:38 2022  
 Response via : Initial Calibration  
 Integrator: ChemStation

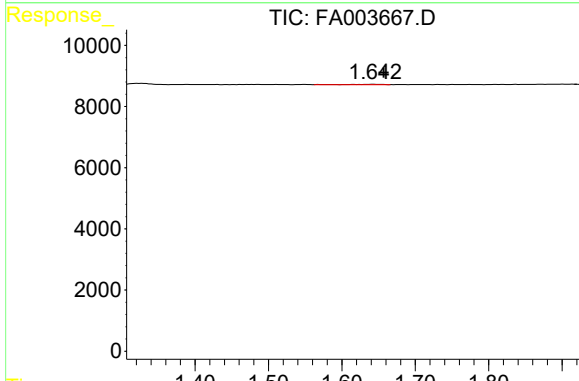
Volume Inj. :  
 Signal Phase : RT-U Plot  
 Signal Info : 30M x 0.32mm



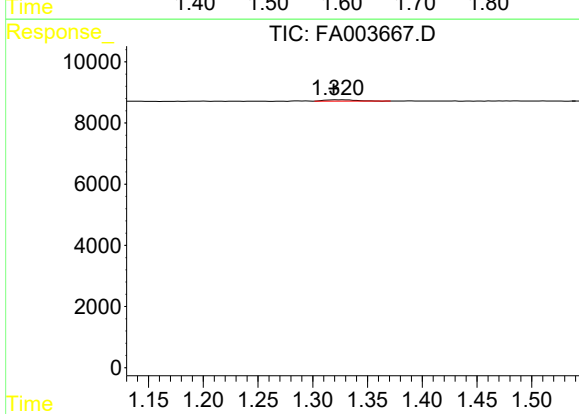


#1 Ethane  
 R.T.: 1.753 min  
 Delta R.T.: 0.021 min  
 Response: 81  
 Conc: 0.27 ppmv

Instrument :  
 FID\_A  
 ClientSampleId :



#2 Ethylene  
 R.T.: 1.644 min  
 Delta R.T.: -0.013 min  
 Response: 291  
 Conc: 1.07 ppmv



#3 Methane  
 R.T.: 1.322 min  
 Delta R.T.: 0.003 min  
 Response: 868  
 Conc: 5.13 ppmv