

Data Path : Z:\pestpcbsrv\HPCHEM1\FID_A\Data\FA120622\
 Data File : FA003660.D
 Signal(s) : FID1A.CH
 Acq On : 6 Dec 2022 9:00
 Operator : SJ/MA
 Sample : BSA1206G1
 Misc :
 ALS Vial : 3 Sample Multiplier: 1

Instrument :
 FID_A
ClientSampleId :
 BSA1206G1

Manual Integrations
APPROVED

Reviewed By :Yogesh Patel 12/06/2022
 Supervised By :Ankita Jodhani 12/06/2022

Integration File: autoint1.e
 Quant Time: Dec 06 08:56:44 2022
 Quant Method : Z:\pestpcbsrv\HPCHEM1\FID_A\Method\FA120522 GASES.M
 Quant Title :
 QLast Update : Tue Dec 06 08:56:38 2022
 Response via : Initial Calibration
 Integrator: ChemStation

Volume Inj. :
 Signal Phase : RT-U Plot
 Signal Info : 30M x 0.32mm

Compound	R.T.	Response	Conc Units

Target Compounds			
1) Ethane	1.790	61779	208.249 ppmv m
2) Ethylene	1.704	57520	211.519 ppmv m
3) Methane	1.324	31812	188.000 ppmv

(f)=RT Delta > 1/2 Window

(m)=manual int.

Data Path : Z:\pestpcbsrv\HPCHEM1\FID_A\Data\FA120622\
 Data File : FA003660.D
 Signal(s) : FID1A.CH
 Acq On : 6 Dec 2022 9:00
 Operator : SJ/MA
 Sample : BSA1206G1
 Misc :
 ALS Vial : 3 Sample Multiplier: 1

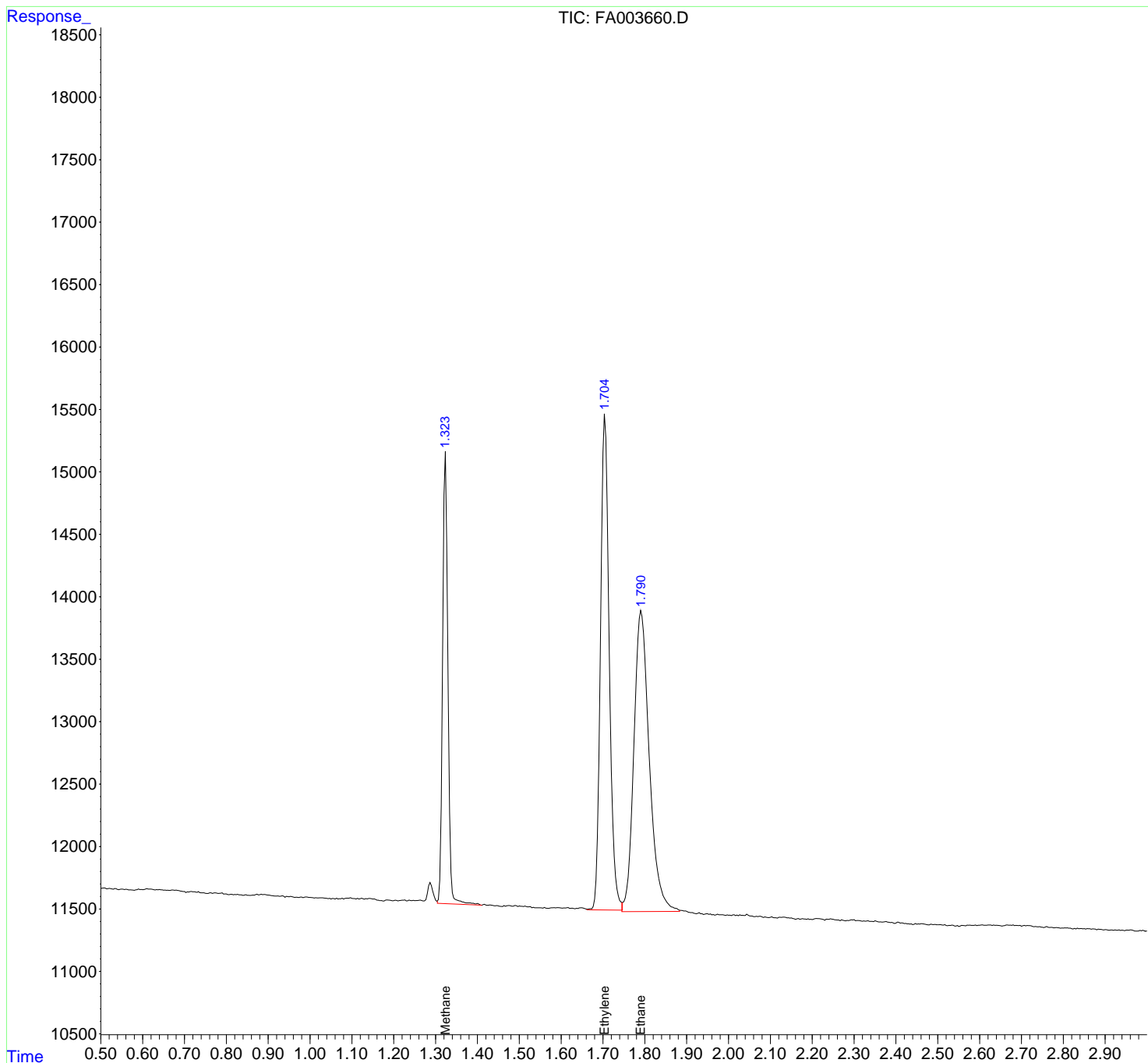
Instrument :
 FID_A
ClientSampleId :
 BSA1206G1

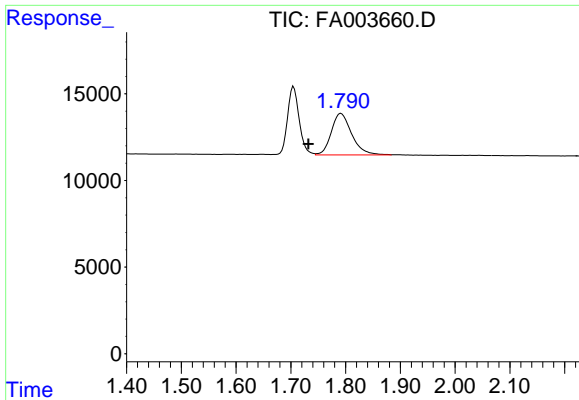
Manual Integrations
APPROVED

Reviewed By :Yogesh Patel 12/06/2022
 Supervised By :Ankita Jodhani 12/06/2022

Integration File: autoint1.e
 Quant Time: Dec 06 08:56:44 2022
 Quant Method : Z:\pestpcbsrv\HPCHEM1\FID_A\Method\FA120522 GASES.M
 Quant Title :
 QLast Update : Tue Dec 06 08:56:38 2022
 Response via : Initial Calibration
 Integrator: ChemStation

Volume Inj. :
 Signal Phase : RT-U Plot
 Signal Info : 30M x 0.32mm





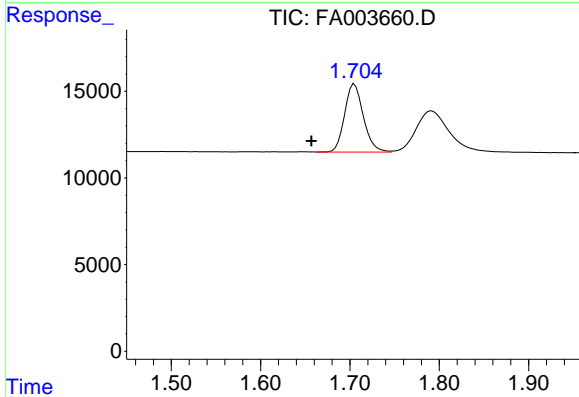
#1 Ethane

R.T.: 1.790 min
 Delta R.T.: 0.058 min
 Response: 61779
 Conc: 208.25 ppmv

Instrument :
 FID_A
 ClientSampleId :
 BSA1206G1

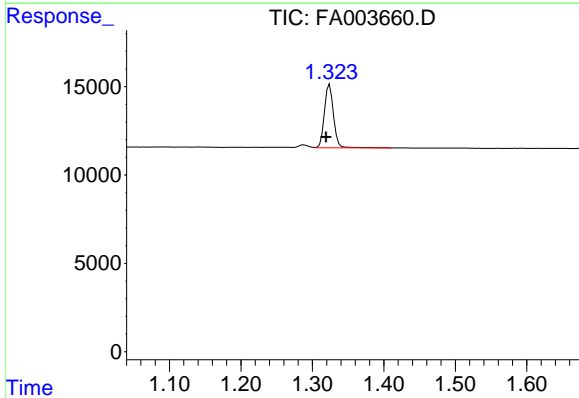
Manual Integrations
 APPROVED

Reviewed By :Yogesh Patel 12/06/2022
 Supervised By :Ankita Jodhani 12/06/2022



#2 Ethylene

R.T.: 1.704 min
 Delta R.T.: 0.047 min
 Response: 57520
 Conc: 211.52 ppmv m



#3 Methane

R.T.: 1.324 min
 Delta R.T.: 0.005 min
 Response: 31812
 Conc: 188.00 ppmv