

Data Path : Z:\pestpcbsrv\HPCHEM1\FID_A\Data\FA102518\
 Data File : FA002322.D
 Signal(s) : FID1A.CH
 Acq On : 25 Oct 2018 10:25
 Operator : UA/AJ
 Sample : 100 PPMV ICC
 Misc :
 ALS Vial : 4 Sample Multiplier: 1

Instrument :
 FID_A
 ClientSampleId :
 100 PPMV ICC

Integration File: autoint1.e
 Quant Time: Oct 25 10:58:26 2018
 Quant Method : Z:\pestpcbsrv\HPCHEM1\FID_A\Method\FA102518 GASES.M
 Quant Title :
 QLast Update : Thu Oct 25 10:57:30 2018
 Response via : Initial Calibration
 Integrator: ChemStation

Volume Inj. :
 Signal Phase : RT-U Plot
 Signal Info : 30M x 0.32mm

Compound	R.T.	Response	Conc Units

Target Compounds			
1) Ethane	2.461	30157	92.591 ppmv
2) Ethylene	2.380	27319	94.743 ppmv
3) Methane	1.984	19210	97.434 ppmv

(f)=RT Delta > 1/2 Window

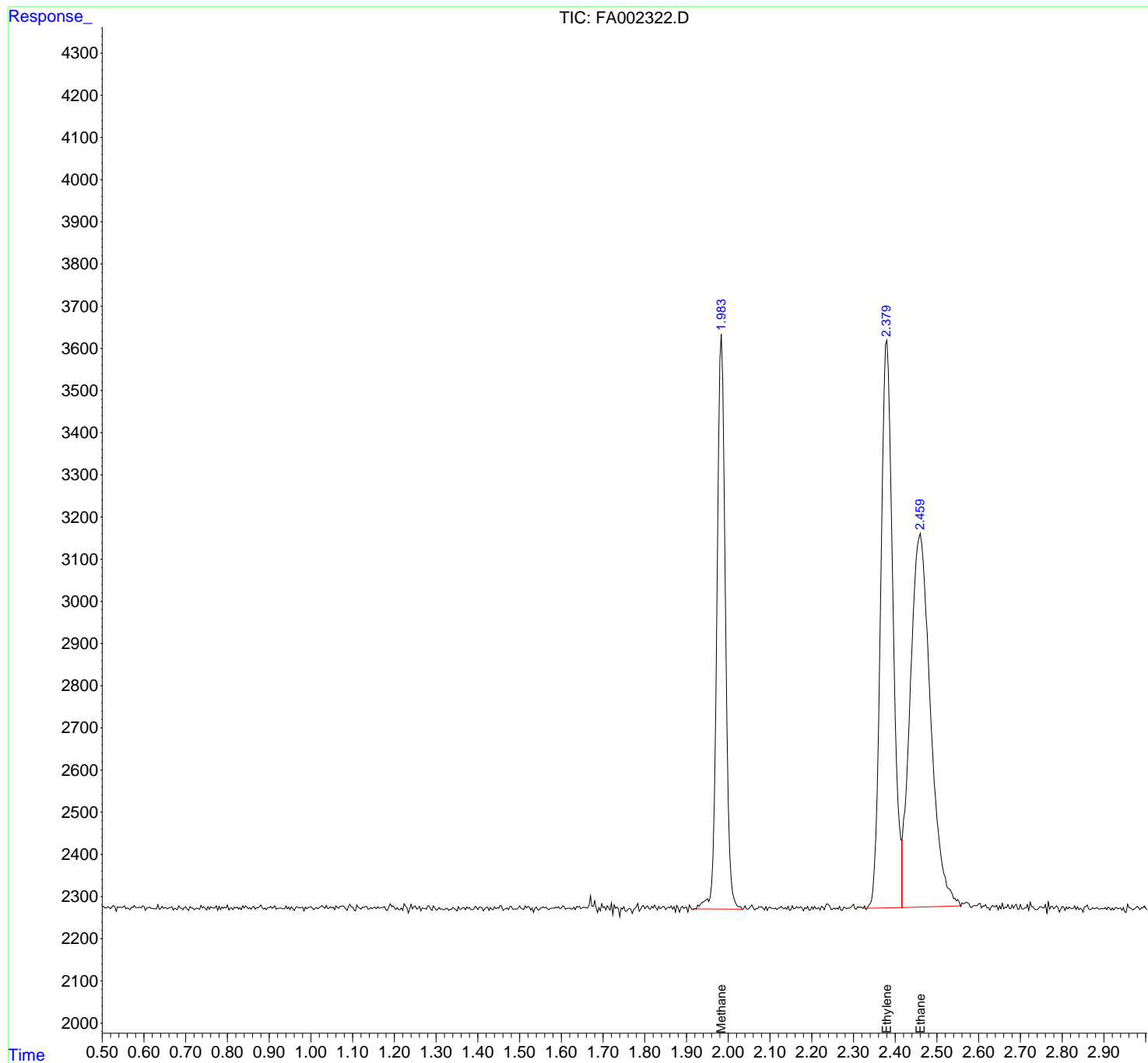
(m)=manual int.

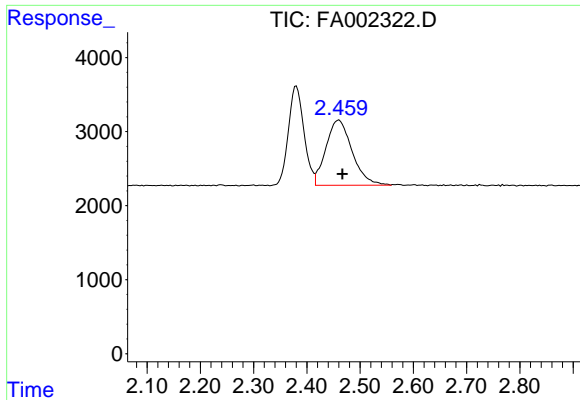
Data Path : Z:\pestpcbsrv\HPCHEM1\FID_A\Data\FA102518\
 Data File : FA002322.D
 Signal(s) : FID1A.CH
 Acq On : 25 Oct 2018 10:25
 Operator : UA/AJ
 Sample : 100 PPMV ICC
 Misc :
 ALS Vial : 4 Sample Multiplier: 1

Instrument :
 FID_A
 ClientSampled :
 100 PPMV ICC

Integration File: autoint1.e
 Quant Time: Oct 25 10:58:26 2018
 Quant Method : Z:\pestpcbsrv\HPCHEM1\FID_A\Method\FA102518 GASES.M
 Quant Title :
 QLast Update : Thu Oct 25 10:57:30 2018
 Response via : Initial Calibration
 Integrator: ChemStation

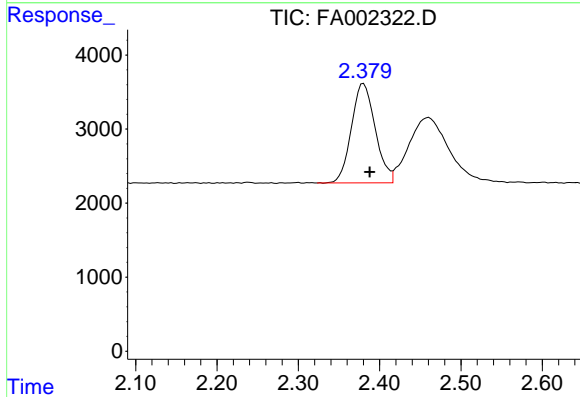
Volume Inj. :
 Signal Phase : RT-U Plot
 Signal Info : 30M x 0.32mm



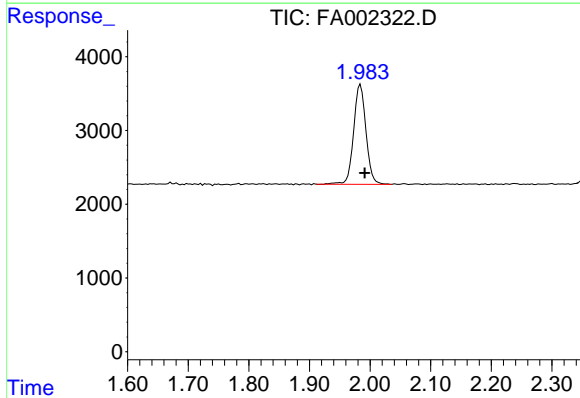


#1 Ethane
 R.T.: 2.461 min
 Delta R.T.: -0.006 min
 Response: 30157
 Conc: 92.59 ppmv

Instrument :
 FID_A
 ClientSampleId :
 100 PPMV ICC



#2 Ethylene
 R.T.: 2.380 min
 Delta R.T.: -0.008 min
 Response: 27319
 Conc: 94.74 ppmv



#3 Methane
 R.T.: 1.984 min
 Delta R.T.: -0.007 min
 Response: 19210
 Conc: 97.43 ppmv