

Data Path : Z:\pestpcbsrv\HPCHEM1\FID_A\Data\FA102518\
 Data File : FA002325.D
 Signal(s) : FID1A.CH
 Acq On : 25 Oct 2018 11:25
 Operator : UA/AJ
 Sample : 200 PPMV CCC
 Misc :
 ALS Vial : 7 Sample Multiplier: 1

Instrument :
 FID_A
ClientSampleId :
 200 PPMV CCC

Integration File: autoint1.e
 Quant Time: Oct 25 13:42:02 2018
 Quant Method : Z:\pestpcbsrv\HPCHEM1\FID_A\Method\FA102518 GASES.M
 Quant Title :
 QLast Update : Thu Oct 25 11:12:40 2018
 Response via : Initial Calibration
 Integrator: ChemStation

Volume Inj. :
 Signal Phase : RT-U Plot
 Signal Info : 30M x 0.32mm

Compound	R.T.	Response	Conc Units

Target Compounds			
1) Ethane	2.462	54373	193.610 ppmv
2) Ethylene	2.383	46131	181.298 ppmv
3) Methane	1.987	34466	195.827 ppmv

(f)=RT Delta > 1/2 Window

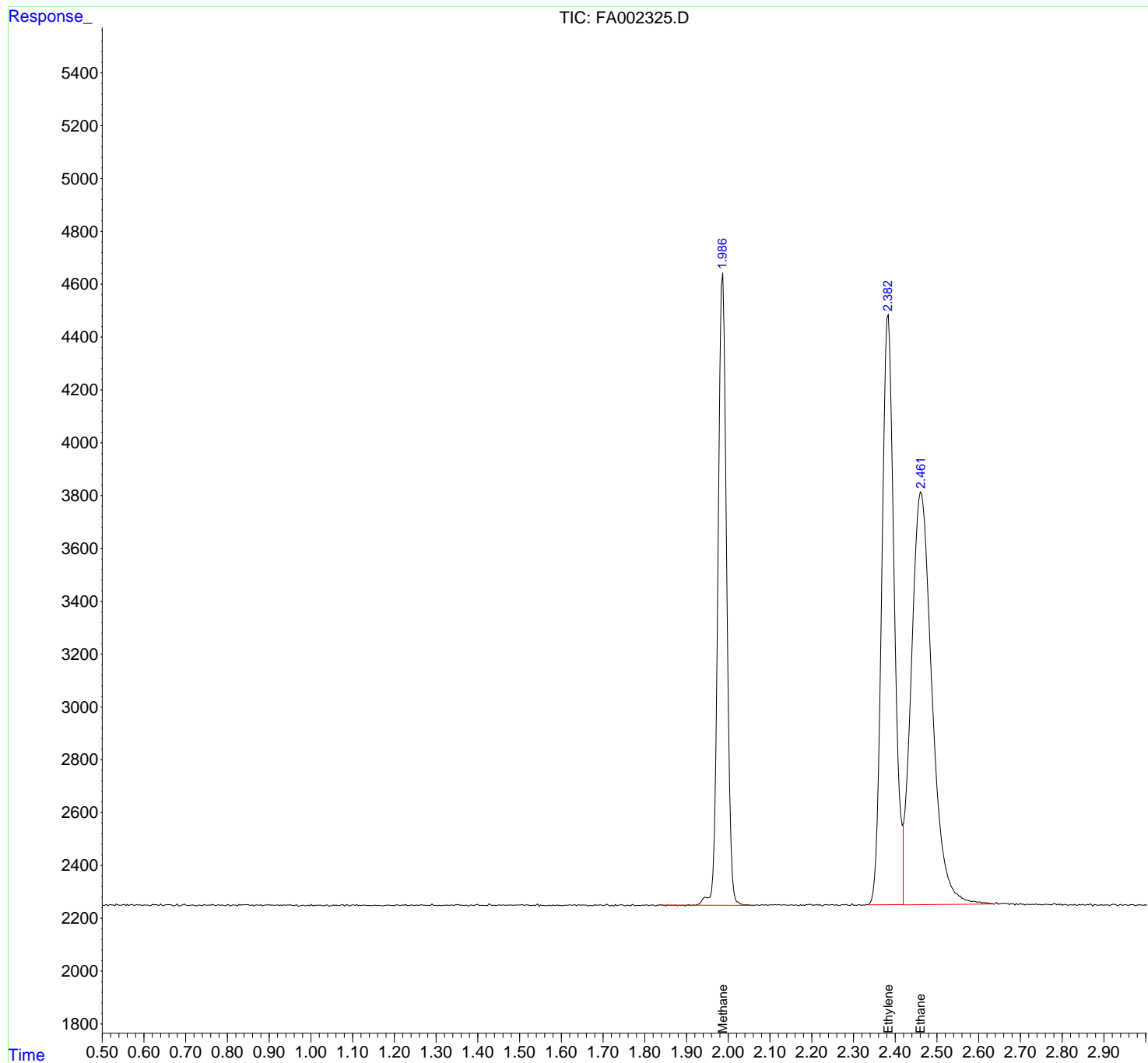
(m)=manual int.

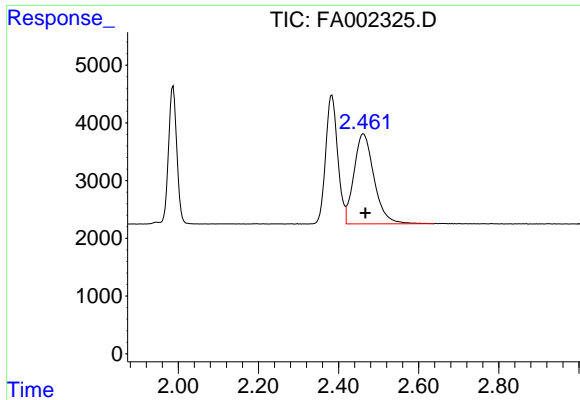
Data Path : Z:\pestpcbsrv\HPCHEM1\FID_A\Data\FA102518\
 Data File : FA002325.D
 Signal(s) : FID1A.CH
 Acq On : 25 Oct 2018 11:25
 Operator : UA/AJ
 Sample : 200 PPMV CCC
 Misc :
 ALS Vial : 7 Sample Multiplier: 1

Instrument :
 FID_A
ClientSampled :
 200 PPMV CCC

Integration File: autoint1.e
 Quant Time: Oct 25 13:42:02 2018
 Quant Method : Z:\pestpcbsrv\HPCHEM1\FID_A\Method\FA102518 GASES.M
 Quant Title :
 QLast Update : Thu Oct 25 11:12:40 2018
 Response via : Initial Calibration
 Integrator: ChemStation

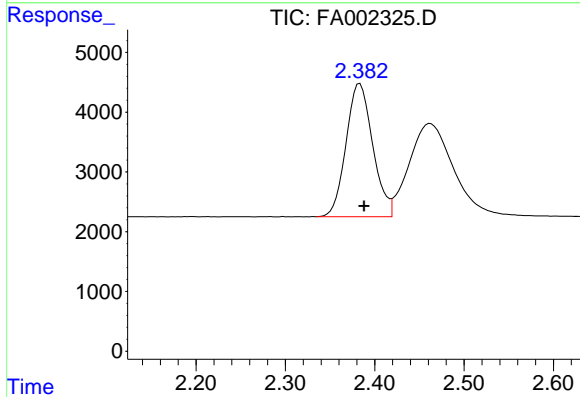
Volume Inj. :
 Signal Phase : RT-U Plot
 Signal Info : 30M x 0.32mm



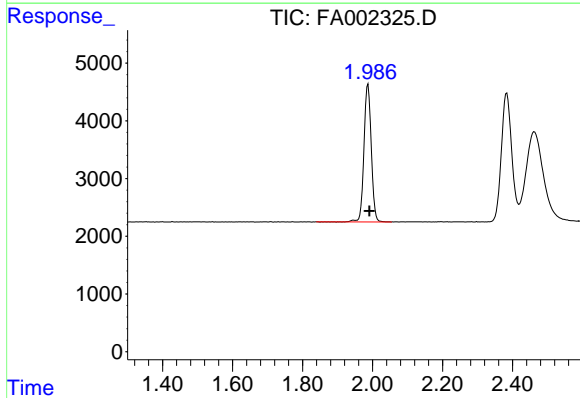


#1 Ethane
 R.T.: 2.462 min
 Delta R.T.: -0.005 min
 Response: 54373
 Conc: 193.61 ppmv

Instrument :
 FID_A
ClientSampled :
 200 PPMV CCC



#2 Ethylene
 R.T.: 2.383 min
 Delta R.T.: -0.005 min
 Response: 46131
 Conc: 181.30 ppmv



#3 Methane
 R.T.: 1.987 min
 Delta R.T.: -0.004 min
 Response: 34466
 Conc: 195.83 ppmv