

Data Path : Z:\pestpcbsrv\HPCHEM1\FID\_B\Data\FB010919\  
 Data File : FB019314.D  
 Signal(s) : FID2B.CH  
 Acq On : 9 Jan 2019 17:20  
 Operator : MJ/SJ  
 Sample : K1087-10  
 Misc : 5.03g/5.00ml DI WATER  
 ALS Vial : 3 Sample Multiplier: 1

Integration File: Calibration.e  
 Quant Time: Jan 10 04:22:44 2019  
 Quant Method : Z:\pestpcbsrv\HPCHEM1\FID\_B\Method\FB010819.M  
 Quant Title :  
 QLast Update : Wed Jan 09 07:19:31 2019  
 Response via : Initial Calibration  
 Integrator: ChemStation

Volume Inj. : 5 g/ml  
 Signal Phase : RTX-502.2  
 Signal Info : 60mx0.53mmx3.00um

Compound	R.T.	Response	Conc Units
-----			
System Monitoring Compounds			
5) s AAA-TFT	9.047	167489	18.849 ng/ml
Target Compounds			
8) t m-Xylene	13.480	10721	0.467 ng/ml
-----			

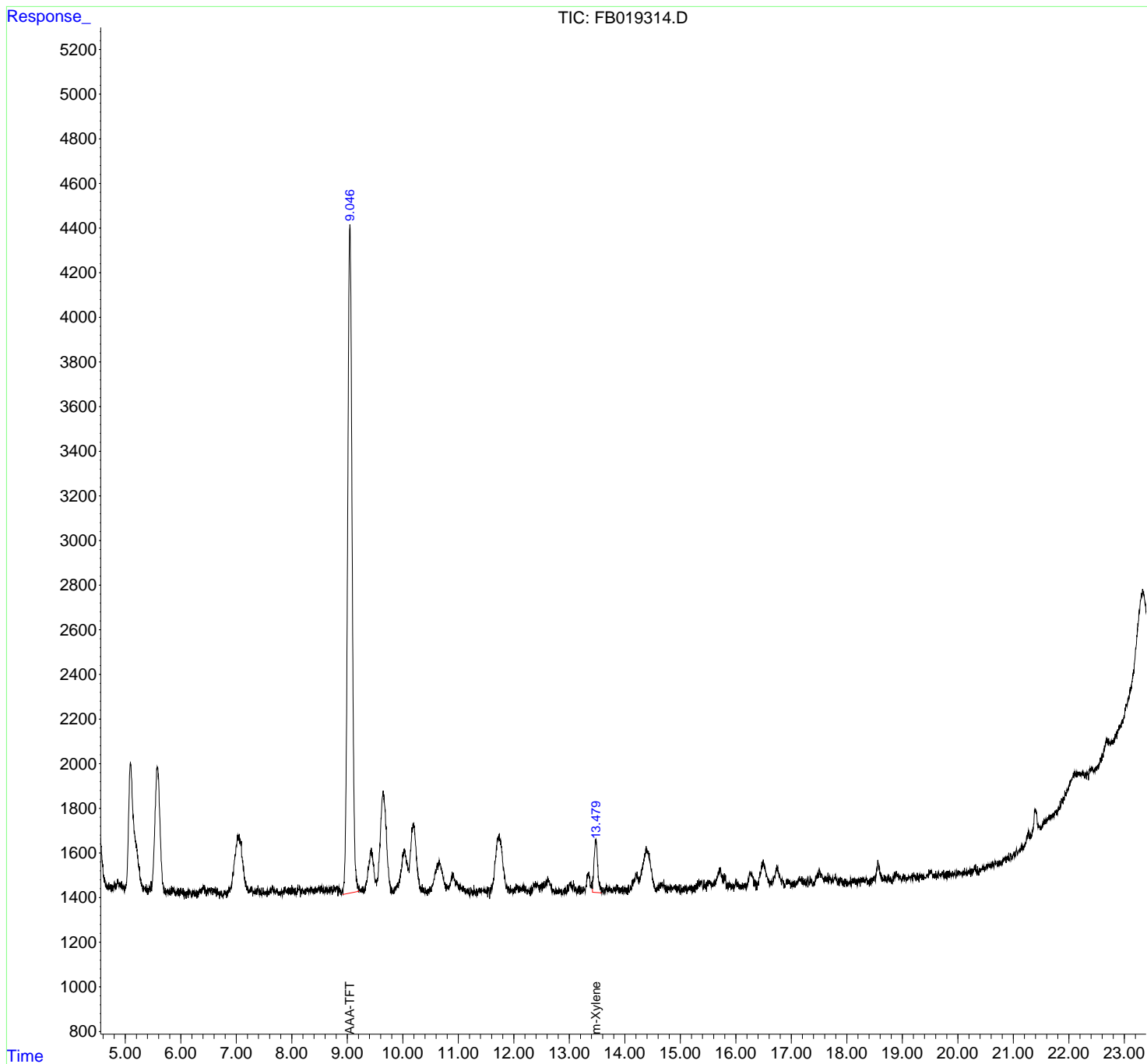
(f)=RT Delta > 1/2 Window

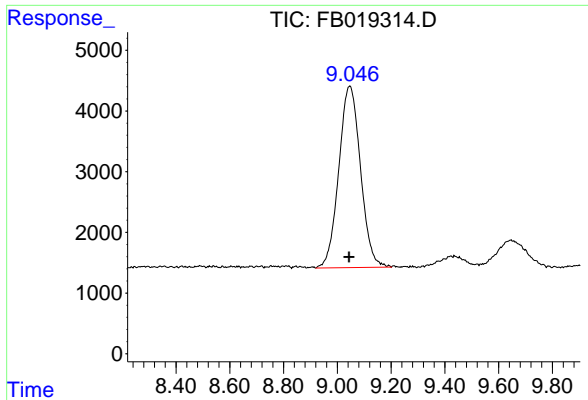
(m)=manual int.

Data Path : Z:\pestpcbsrv\HPCHEM1\FID\_B\Data\FB010919\  
Data File : FB019314.D  
Signal(s) : FID2B.CH  
Acq On : 9 Jan 2019 17:20  
Operator : MJ/SJ  
Sample : K1087-10  
Misc : 5.03g/5.00ml DI WATER  
ALS Vial : 3 Sample Multiplier: 1

Integration File: Calibration.e  
Quant Time: Jan 10 04:22:44 2019  
Quant Method : Z:\pestpcbsrv\HPCHEM1\FID\_B\Method\FB010819.M  
Quant Title :  
QLast Update : Wed Jan 09 07:19:31 2019  
Response via : Initial Calibration  
Integrator: ChemStation

Volume Inj. : 5 g/ml  
Signal Phase : RTX-502.2  
Signal Info : 60mx0.53mmx3.00um





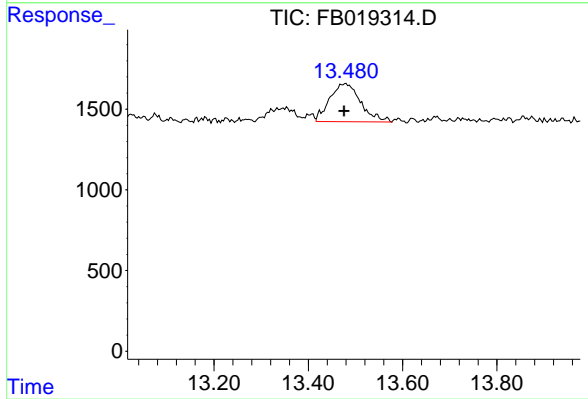
#5 AAA-TFT

R.T.: 9.047 min

Delta R.T.: 0.004 min

Response: 167489

Conc: 18.85 ng/ml



#8 m-Xylene

R.T.: 13.480 min

Delta R.T.: 0.004 min

Response: 10721

Conc: 0.47 ng/ml