

Data Path : Z:\pestpcbsrv\HPCHEM1\FID_B\Data\FB011019\
Data File : FB019358.D
Signal(s) : FID2B.CH
Acq On : 10 Jan 2019 16:36
Operator : MJ/SJ
Sample : K1118-03
Misc : 5.04g/5.00ml DI WATER
ALS Vial : 13 Sample Multiplier: 1

Instrument :
FID_B
ClientSampleId :

Integration File: Calibration.e
Quant Time: Jan 11 04:52:42 2019
Quant Method : Z:\pestpcbsrv\HPCHEM1\FID_B\Method\FB010819.M
Quant Title :
QLast Update : Wed Jan 09 07:19:31 2019
Response via : Initial Calibration
Integrator: ChemStation

Volume Inj. : 5 g/ml
Signal Phase : RTX-502.2
Signal Info : 60mx0.53mmx3.00um

Compound	R.T.	Response	Conc Units

System Monitoring Compounds			
5) s AAA-TFT	9.046	168385	18.950 ng/ml
Target Compounds			

(f)=RT Delta > 1/2 Window

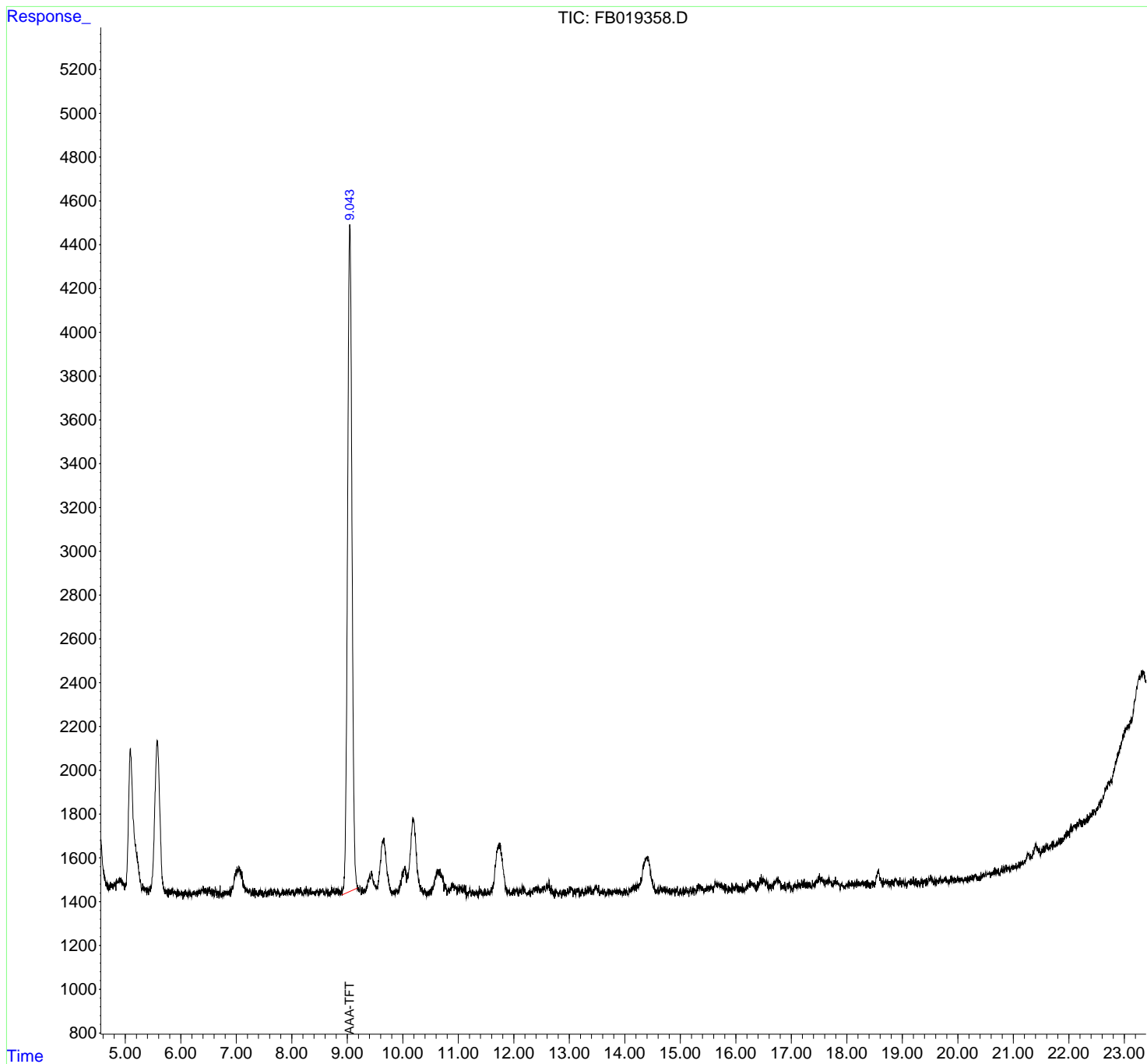
(m)=manual int.

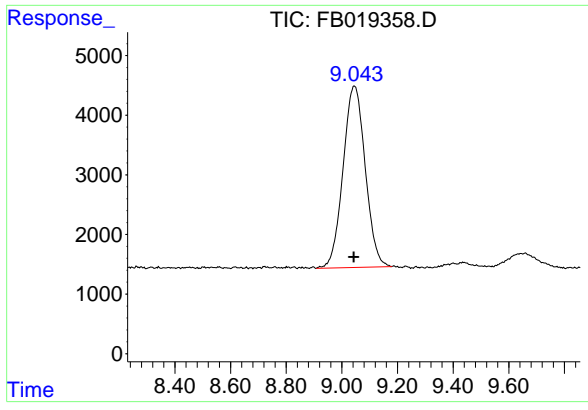
Data Path : Z:\pestpcbsrv\HPCHEM1\FID_B\Data\FB011019\
 Data File : FB019358.D
 Signal(s) : FID2B.CH
 Acq On : 10 Jan 2019 16:36
 Operator : MJ/SJ
 Sample : K1118-03
 Misc : 5.04g/5.00ml DI WATER
 ALS Vial : 13 Sample Multiplier: 1

Instrument :
 FID_B
 ClientSampleId :

Integration File: Calibration.e
 Quant Time: Jan 11 04:52:42 2019
 Quant Method : Z:\pestpcbsrv\HPCHEM1\FID_B\Method\FB010819.M
 Quant Title :
 QLast Update : Wed Jan 09 07:19:31 2019
 Response via : Initial Calibration
 Integrator: ChemStation

Volume Inj. : 5 g/ml
 Signal Phase : RTX-502.2
 Signal Info : 60mx0.53mmx3.00um





#5 AAA-TFT
R.T.: 9.046 min
Delta R.T.: 0.002 min
Response: 168385
Conc: 18.95 ng/ml

Instrument :
FID_B
ClientSampleId :