

Data Path : Z:\pestpcbsrv\HPCHEM1\FID\_B\Data\FB011419\  
Data File : FB019399.D  
Signal(s) : FID2B.CH  
Acq On : 14 Jan 2019 17:55  
Operator : MJ/SJ  
Sample : K1139-10  
Misc : 5.05g/5.00ml DI WATER  
ALS Vial : 18 Sample Multiplier: 1

Integration File: Calibration.e  
Quant Time: Jan 14 22:40:15 2019  
Quant Method : Z:\pestpcbsrv\HPCHEM1\FID\_B\Method\FB010819.M  
Quant Title :  
QLast Update : Wed Jan 09 07:19:31 2019  
Response via : Initial Calibration  
Integrator: ChemStation

Volume Inj. : 5 g/ml  
Signal Phase : RTX-502.2  
Signal Info : 60mx0.53mmx3.00um

Compound	R.T.	Response	Conc Units
-----			
System Monitoring Compounds			
5) s AAA-TFT	9.041	100412	11.300 ng/ml
Target Compounds			
-----			

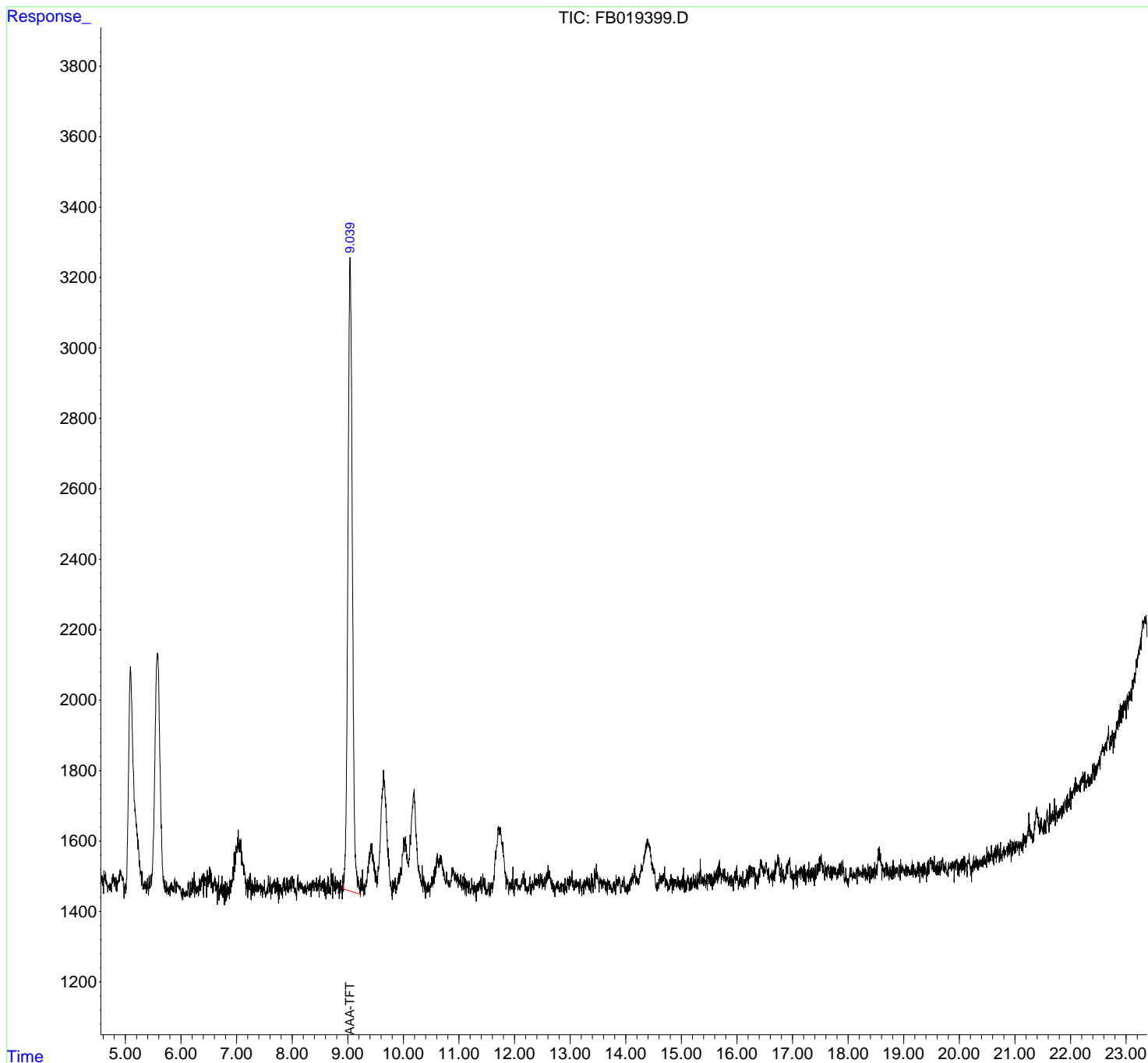
(f)=RT Delta > 1/2 Window

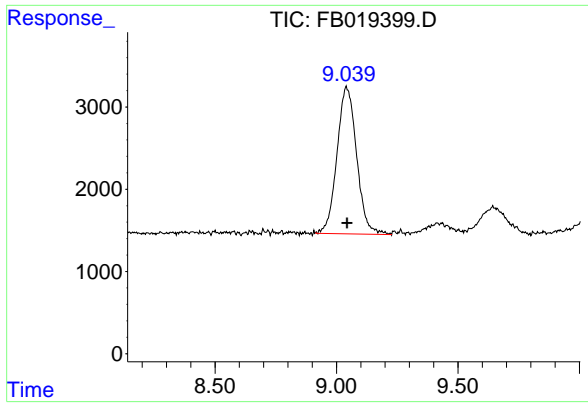
(m)=manual int.

Data Path : Z:\pestpcbsrv\HPCHEM1\FID\_B\Data\FB011419\  
Data File : FB019399.D  
Signal(s) : FID2B.CH  
Acq On : 14 Jan 2019 17:55  
Operator : MJ/SJ  
Sample : K1139-10  
Misc : 5.05g/5.00ml DI WATER  
ALS Vial : 18 Sample Multiplier: 1

Integration File: Calibration.e  
Quant Time: Jan 14 22:40:15 2019  
Quant Method : Z:\pestpcbsrv\HPCHEM1\FID\_B\Method\FB010819.M  
Quant Title :  
QLast Update : Wed Jan 09 07:19:31 2019  
Response via : Initial Calibration  
Integrator: ChemStation

Volume Inj. : 5 g/ml  
Signal Phase : RTX-502.2  
Signal Info : 60mx0.53mmx3.00um





#5 AAA-TFT

R.T.: 9.041 min  
Delta R.T.: -0.003 min  
Response: 100412  
Conc: 11.30 ng/ml