

Data Path : Z:\pestpcbsrv\HPCHEM1\FID_B\Data\FB011420\
 Data File : FB023403.D
 Signal(s) : FID2B.CH
 Acq On : 14 Jan 2020 8:31
 Operator : DD/AJ
 Sample : 20 PPB GRO STD
 Misc :
 ALS Vial : 1 Sample Multiplier: 1

Integration File: Calibration.e
 Quant Time: Jan 14 21:08:38 2020
 Quant Method : Z:\pestpcbsrv\HPCHEM1\FID_B\Method\FB121919.M
 Quant Title :
 QLast Update : Thu Dec 19 12:43:06 2019
 Response via : Initial Calibration
 Integrator: ChemStation

Volume Inj. : 5 g/ml
 Signal Phase : RTX-502.2
 Signal Info : 60mx0.53mmx3.00um

Compound	R.T.	Response	Conc Units

System Monitoring Compounds			
5) s AAA-TFT	8.789	504023	21.254 ng/ml
Target Compounds			
1) t 2-Methylpentane	4.682	923735	29.846 ng/ml
2) t 2,2,4-Trimethylpentane	7.408	1050103	31.435 ng/ml
3) t n-Heptane	7.748	340651	10.327 ng/ml
4) t Benzene	7.882	418535	10.481 ng/ml
6) t Toluene	10.620	1204601	31.285 ng/ml
7) t Ethylbenzene	13.060	373054	10.278 ng/ml
8) t m-Xylene	13.193	710324	20.463 ng/ml
9) t O-Xylene	13.921	687563	20.413 ng/ml
10) t 1,2,4-Trimethylbenzene	16.199	584778	20.842 ng/ml

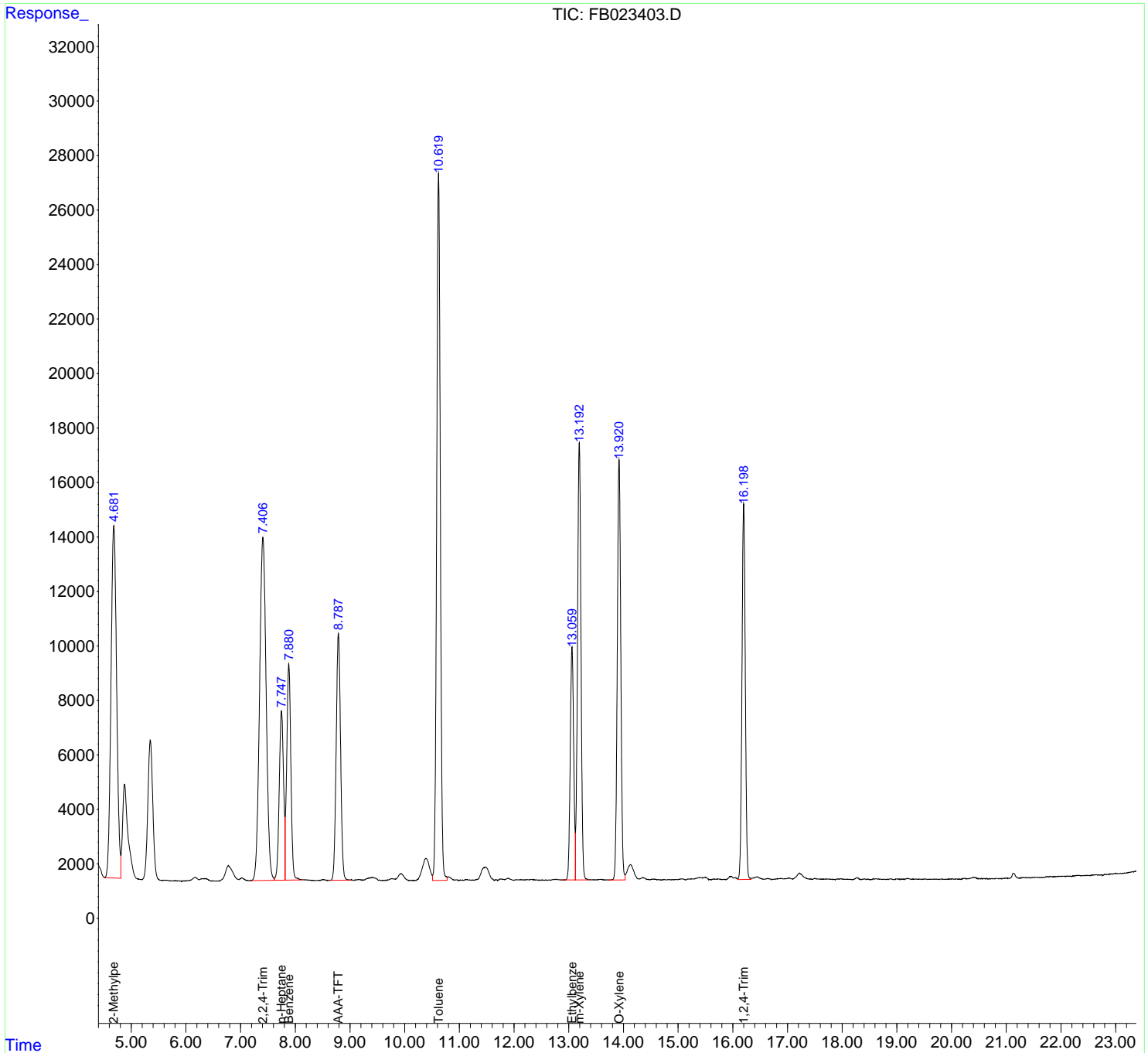
(f)=RT Delta > 1/2 Window

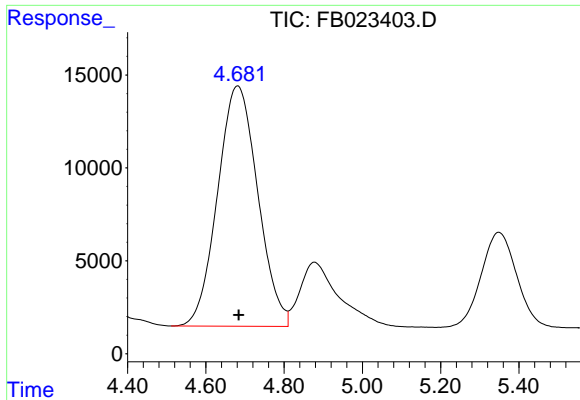
(m)=manual int.

Data Path : Z:\pestpcbsrv\HPCHEM1\FID_B\Data\FB011420\
 Data File : FB023403.D
 Signal(s) : FID2B.CH
 Acq On : 14 Jan 2020 8:31
 Operator : DD/AJ
 Sample : 20 PPB GRO STD
 Misc :
 ALS Vial : 1 Sample Multiplier: 1

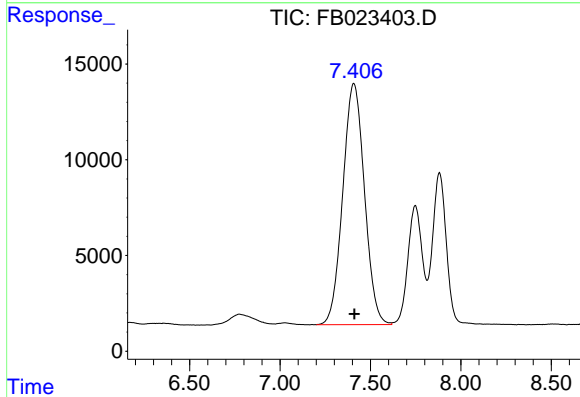
Integration File: Calibration.e
 Quant Time: Jan 14 21:08:38 2020
 Quant Method : Z:\pestpcbsrv\HPCHEM1\FID_B\Method\FB121919.M
 Quant Title :
 QLast Update : Thu Dec 19 12:43:06 2019
 Response via : Initial Calibration
 Integrator: ChemStation

Volume Inj. : 5 g/ml
 Signal Phase : RTX-502.2
 Signal Info : 60mx0.53mmx3.00um

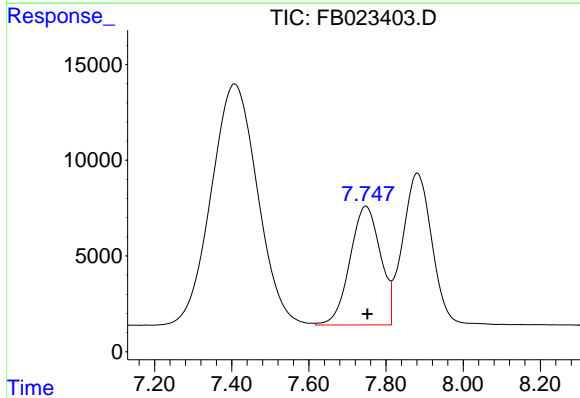




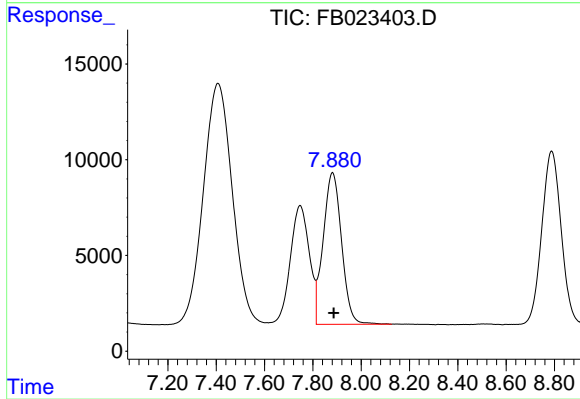
#1 2-Methylpentane
 R.T.: 4.682 min
 Delta R.T.: -0.002 min
 Response: 923735
 Conc: 29.85 ng/ml



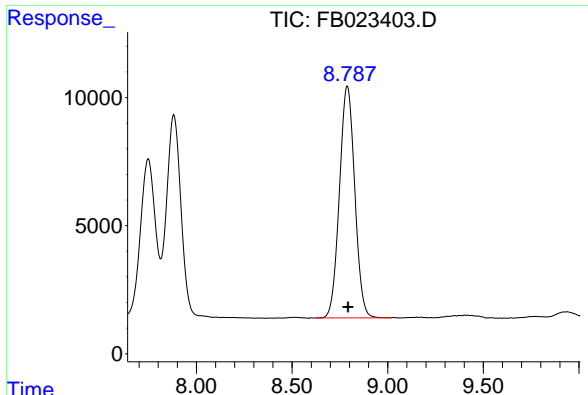
#2 2,2,4-Trimethylpentane
 R.T.: 7.408 min
 Delta R.T.: -0.004 min
 Response: 1050103
 Conc: 31.43 ng/ml



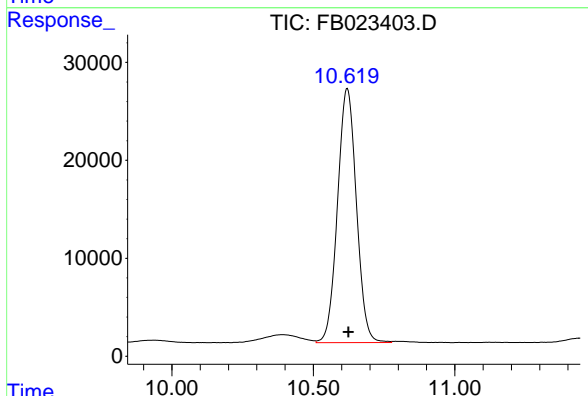
#3 n-Heptane
 R.T.: 7.748 min
 Delta R.T.: -0.004 min
 Response: 340651
 Conc: 10.33 ng/ml



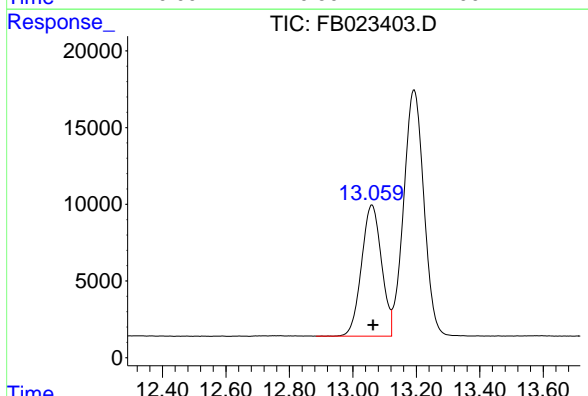
#4 Benzene
 R.T.: 7.882 min
 Delta R.T.: -0.005 min
 Response: 418535
 Conc: 10.48 ng/ml



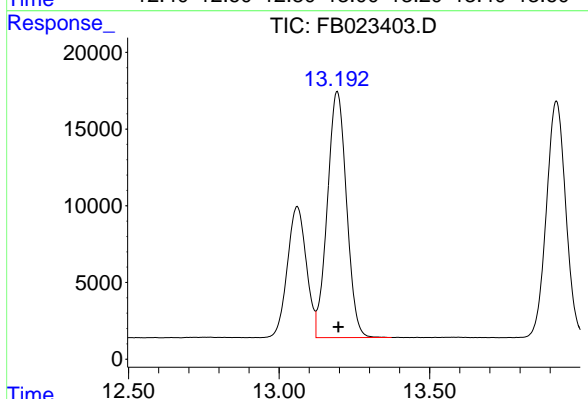
#5 AAA-TFT
 R.T.: 8.789 min
 Delta R.T.: -0.004 min
 Response: 504023
 Conc: 21.25 ng/ml



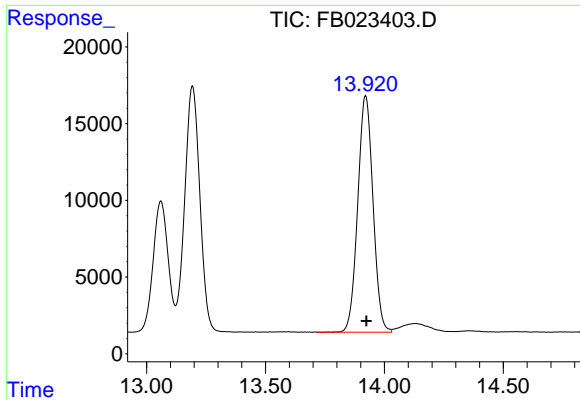
#6 Toluene
 R.T.: 10.620 min
 Delta R.T.: -0.004 min
 Response: 1204601
 Conc: 31.29 ng/ml



#7 Ethylbenzene
 R.T.: 13.060 min
 Delta R.T.: -0.003 min
 Response: 373054
 Conc: 10.28 ng/ml

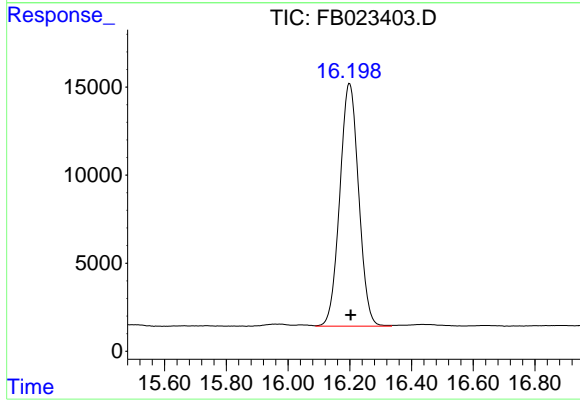


#8 m-Xylene
 R.T.: 13.193 min
 Delta R.T.: -0.004 min
 Response: 710324
 Conc: 20.46 ng/ml



#9 O-Xylene

R.T.: 13.921 min
Delta R.T.: -0.004 min
Response: 687563
Conc: 20.41 ng/ml



#10 1,2,4-Trimethylbenzene

R.T.: 16.199 min
Delta R.T.: -0.004 min
Response: 584778
Conc: 20.84 ng/ml