

Data Path : Z:\pestpcbsrv\HPCHEM1\FID\_B\Data\FB012119\  
 Data File : FB019472.D  
 Signal(s) : FID2B.CH  
 Acq On : 21 Jan 2019 8:54  
 Operator : MJ/SJ  
 Sample : 20 PPB GRO STD  
 Misc :  
 ALS Vial : 1 Sample Multiplier: 1

Integration File: Calibration.e  
 Quant Time: Jan 22 06:33:15 2019  
 Quant Method : Z:\pestpcbsrv\HPCHEM1\FID\_B\Method\FB010819.M  
 Quant Title :  
 QLast Update : Wed Jan 09 07:19:31 2019  
 Response via : Initial Calibration  
 Integrator: ChemStation

Volume Inj. : 5 g/ml  
 Signal Phase : RTX-502.2  
 Signal Info : 60mx0.53mmx3.00um

Compound	R.T.	Response	Conc Units
-----			
System Monitoring Compounds			
5) s AAA-TFT	9.042	199756	22.480 ng/ml
Target Compounds			
1) t 2-Methylpentane	4.897	488926	24.549 ng/ml
2) t 2,2,4-Trimethylpentane	7.656	485465	25.484 ng/ml
3) t n-Heptane	7.996	163484	9.370 ng/ml
4) t Benzene	8.133	203343	10.356 ng/ml
6) t Toluene	10.887	550744	30.446 ng/ml
7) t Ethylbenzene	13.341	224581	10.137 ng/ml
8) t m-Xylene	13.474	462171	20.140 ng/ml
9) t O-Xylene	14.205	443889	19.783 ng/ml
10) t 1,2,4-Trimethylbenzene	16.491	487843	21.395 ng/ml
-----			

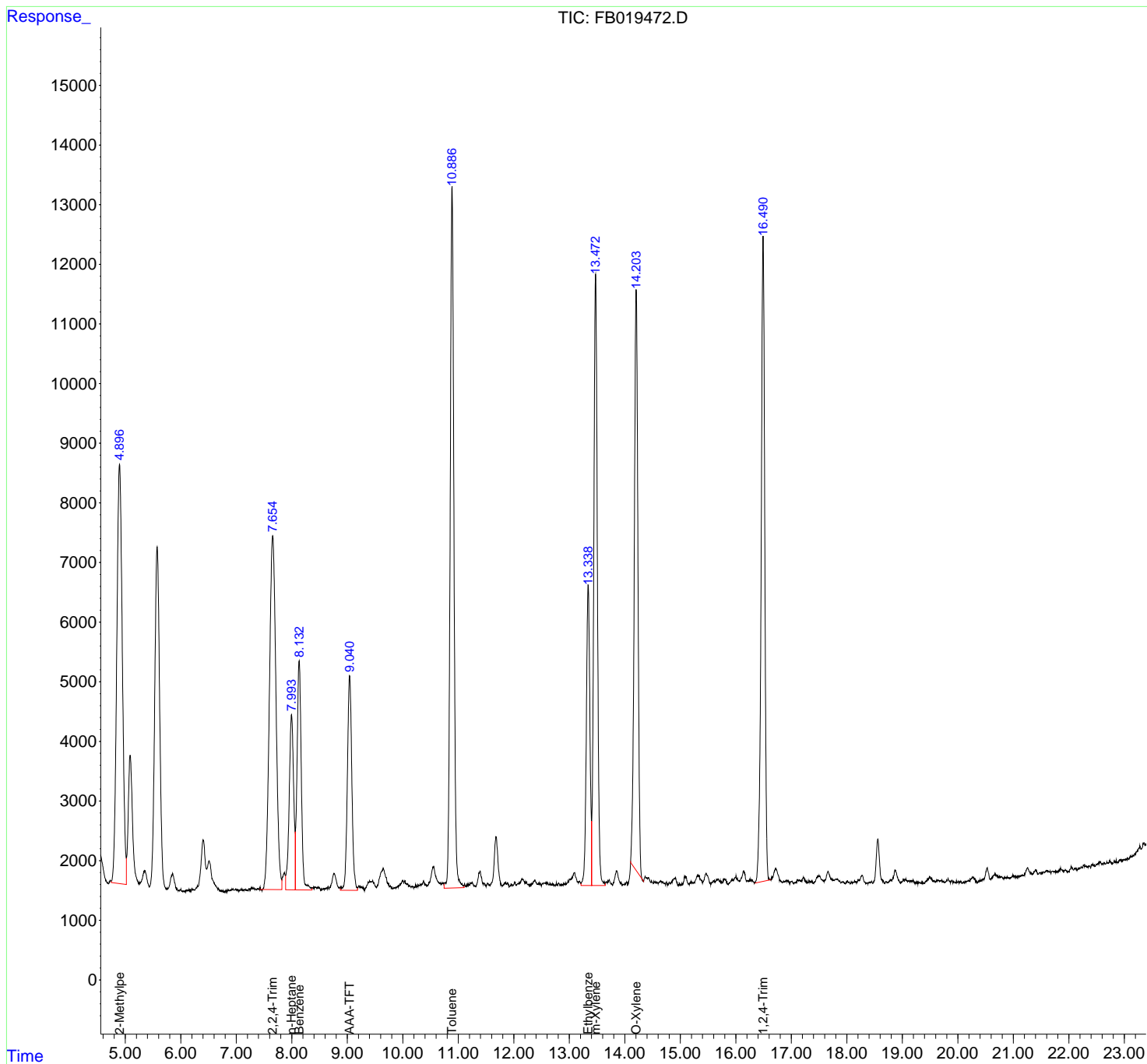
(f)=RT Delta > 1/2 Window

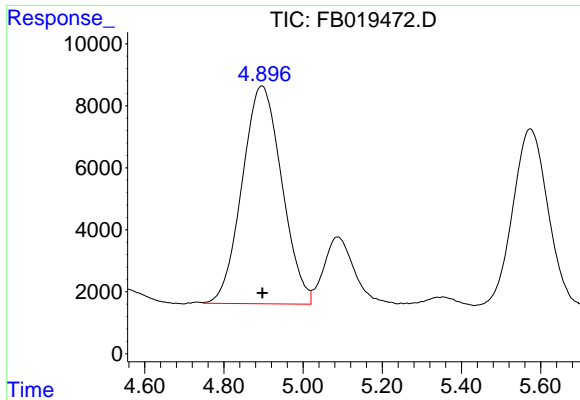
(m)=manual int.

Data Path : Z:\pestpcbsrv\HPCHEM1\FID\_B\Data\FB012119\  
 Data File : FB019472.D  
 Signal(s) : FID2B.CH  
 Acq On : 21 Jan 2019 8:54  
 Operator : MJ/SJ  
 Sample : 20 PPB GRO STD  
 Misc :  
 ALS Vial : 1 Sample Multiplier: 1

Integration File: Calibration.e  
 Quant Time: Jan 22 06:33:15 2019  
 Quant Method : Z:\pestpcbsrv\HPCHEM1\FID\_B\Method\FB010819.M  
 Quant Title :  
 QLast Update : Wed Jan 09 07:19:31 2019  
 Response via : Initial Calibration  
 Integrator: ChemStation

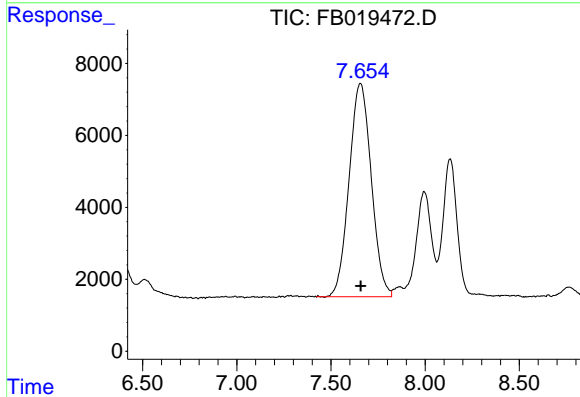
Volume Inj. : 5 g/ml  
 Signal Phase : RTX-502.2  
 Signal Info : 60mx0.53mmx3.00um





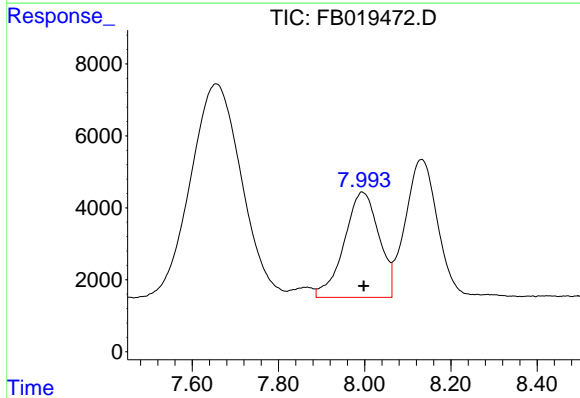
#1 2-Methylpentane

R.T.: 4.897 min  
 Delta R.T.: 0.000 min  
 Response: 488926  
 Conc: 24.55 ng/ml



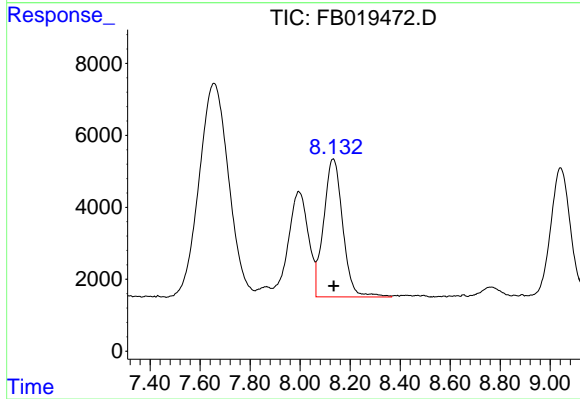
#2 2,2,4-Trimethylpentane

R.T.: 7.656 min  
 Delta R.T.: -0.001 min  
 Response: 485465  
 Conc: 25.48 ng/ml



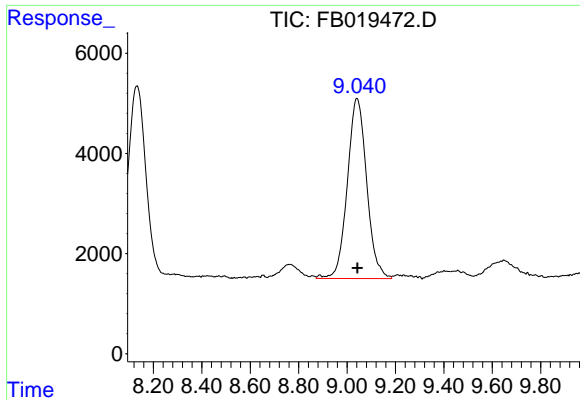
#3 n-Heptane

R.T.: 7.996 min  
 Delta R.T.: -0.003 min  
 Response: 163484  
 Conc: 9.37 ng/ml

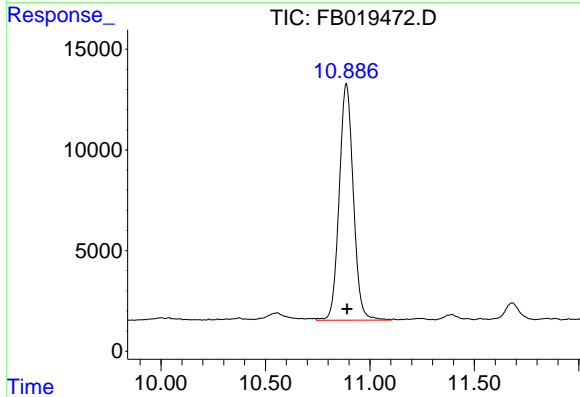


#4 Benzene

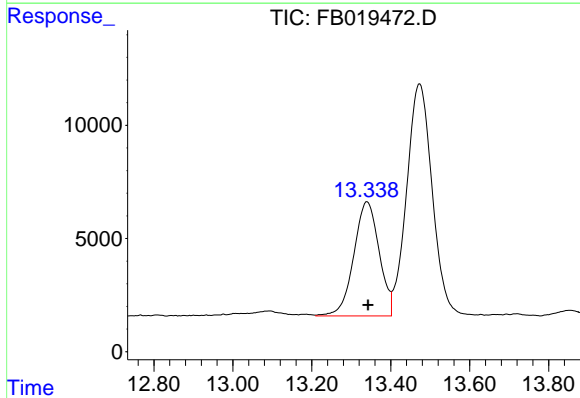
R.T.: 8.133 min  
 Delta R.T.: -0.003 min  
 Response: 203343  
 Conc: 10.36 ng/ml



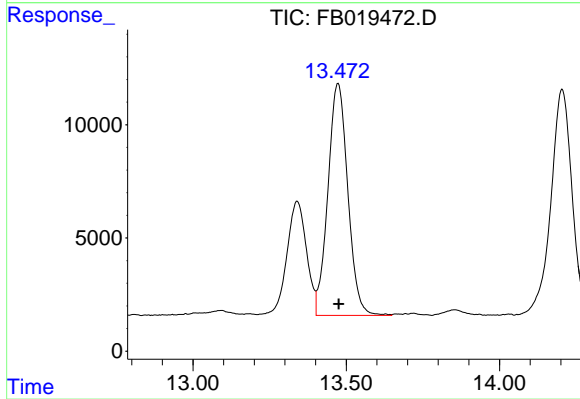
#5 AAA-TFT  
 R.T.: 9.042 min  
 Delta R.T.: -0.002 min  
 Response: 199756  
 Conc: 22.48 ng/ml



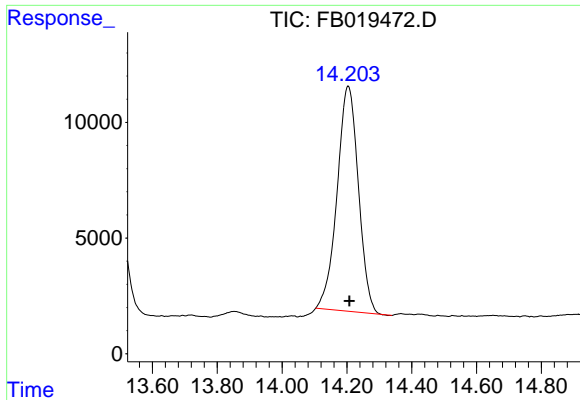
#6 Toluene  
 R.T.: 10.887 min  
 Delta R.T.: -0.003 min  
 Response: 550744  
 Conc: 30.45 ng/ml



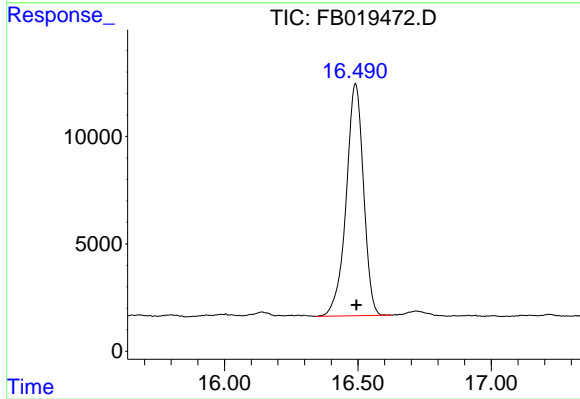
#7 Ethylbenzene  
 R.T.: 13.341 min  
 Delta R.T.: -0.002 min  
 Response: 224581  
 Conc: 10.14 ng/ml



#8 m-Xylene  
 R.T.: 13.474 min  
 Delta R.T.: -0.002 min  
 Response: 462171  
 Conc: 20.14 ng/ml



#9 O-Xylene  
R.T.: 14.205 min  
Delta R.T.: -0.003 min  
Response: 443889  
Conc: 19.78 ng/ml



#10 1,2,4-Trimethylbenzene  
R.T.: 16.491 min  
Delta R.T.: -0.002 min  
Response: 487843  
Conc: 21.39 ng/ml